

AG22

Survey for:

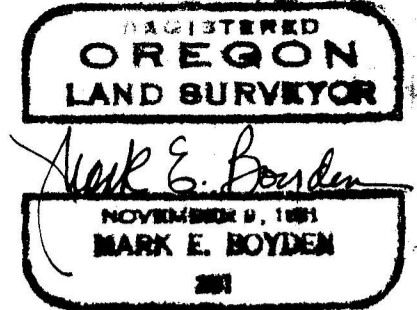
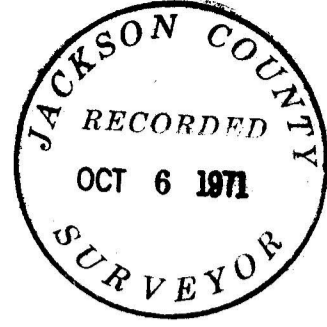
BOISE CASCADE CORPORATION

Located in Section 4,

T. 35 S. R. 2 W., W.M.

By: Mark E. Boyden

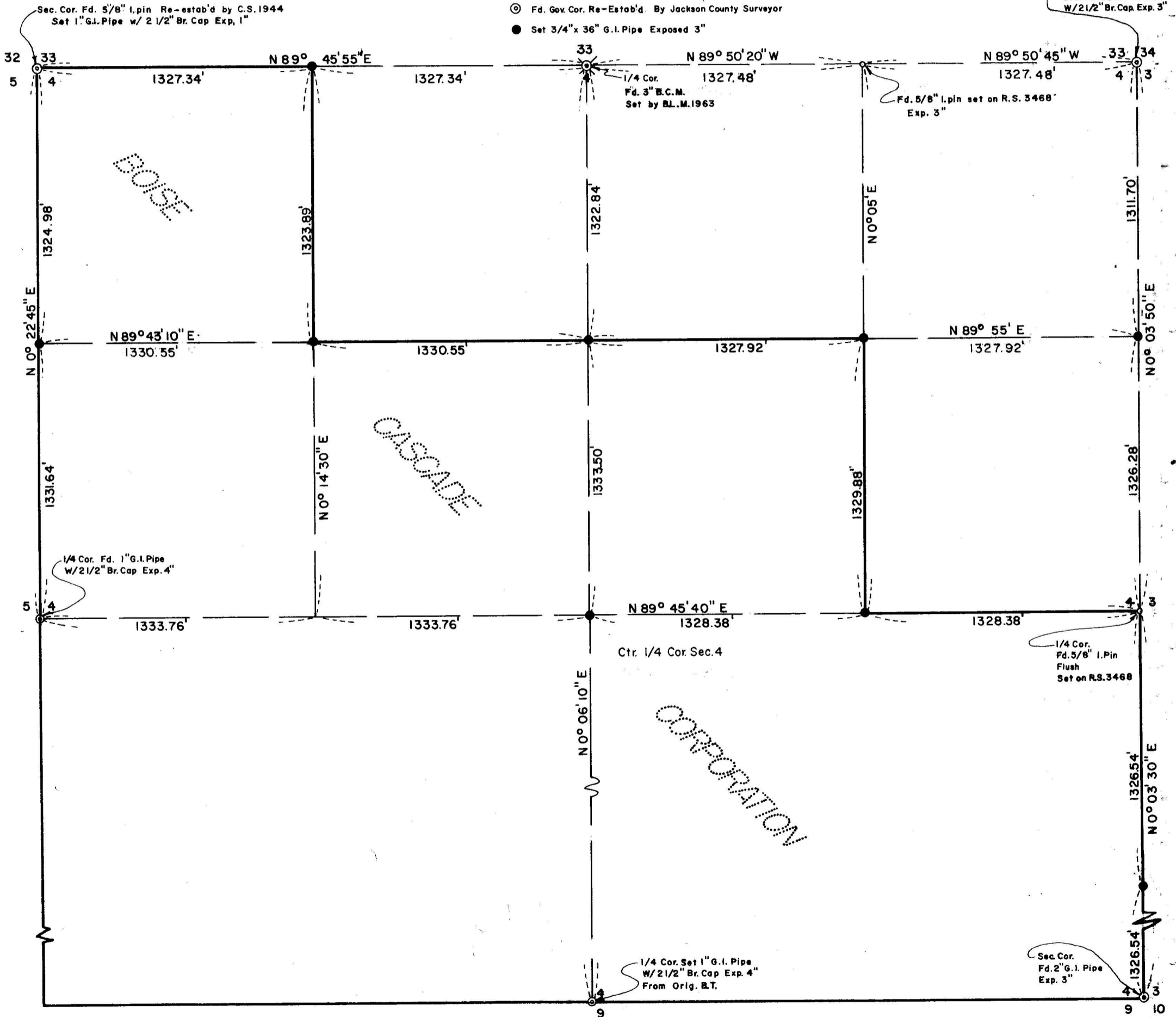
Oct. 5, 1971



SCALE  
1" = 500'

Basis of Bearings  
Mean of 6 Solar Observations

- Fd. 5/8" Iron pin as indicated
- ⊗ Fd. Gov. Cor. Re-Estab'd By the B.L.M.
- ⊙ Fd. Gov. Cor. Re-Estab'd By Jackson County Surveyor
- Set 3/4" x 36" G.I. Pipe Exposed 3"



AG22

AG22

Scribed a 5" White Oak, "CE 1/16 S4 - BT" which bears N 36° 20' E, 33.9 feet to the face of the lower blaze.

At the North one-sixteenth Section Corner common to Section 3 and said Section 4, set a 3/4" x 36" galvanized iron pipe, 33" in the ground for corner, from which:

Scribed a twin 8" White Oak, "N 1/16 S3 - BT" which bears S 25° 20' E, 126.6 feet to the face of the lower blaze;

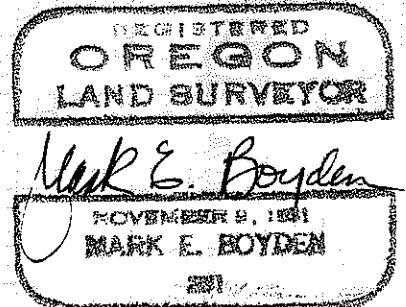
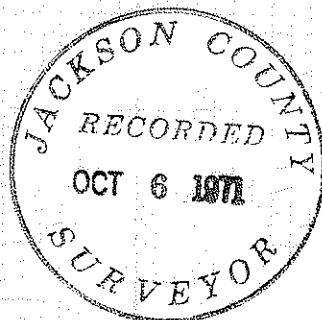
Scribed a 9" White Oak, "N 1/16 S4 - BT" which bears S 88° W, 147.0 feet to the face of the lower blaze.

At the South one-sixteenth Section Corner common to Section 3 and said Section 4, set a 3/4" x 36" galvanized iron pipe, 33" in the ground for corner, from which:

Scribed a 5" Black Oak, "S 1/16 S3 - BT" which bears N 74° E, 67.7 feet to the face of the lower blaze;

Scribed a 6" Black Oak, "S 1/16 S4 - BT" which bears N 6° 10' W, 51.3 feet to the face of the lower blaze.

October 5, 1971



Found an old 3/4" iron pipe exposed 6" which bears S 3° 10' W, 3.5 feet.

At the Northwest one-sixteenth Section Corner of said Section 4, set a 3/4" x 36" galvanized iron pipe, 33" in the ground for corner, from which:

Scribed a 5" White Oak, "NW 1/16 S4 - BT" which bears S 22° W, 21.7 feet to the face of the lower blaze;

Scribed a 14" Laurel, "NW 1/16 S4 - BT" which bears N 78° 40' W, 18.0 feet to the face of the lower blaze;

At the Center-North one-sixteenth section corner of said Section 4, set a 3/4" x 36" galvanized iron pipe, 33" in the ground for corner, from which:

Scribed an 11" White Oak, "CN 1/16 S4 - BT" which bears S 39° 10' W, 69.0 feet to the face of the lower blaze;

Scribed a 6" White Oak, "CN 1/16 S4 - BT" which bears S 42° 10' E, 41.5 feet to the face of the lower blaze.

At the Center Quarter corner of said Section 4, set a 3/4" x 36" Galvanized iron pipe, 33" in the ground for corner, from which:

Scribed an 8" Black Oak "C 1/4 S4 - BT" which bears N 34° 50' W, 49.1 feet to the face of the lower blaze;

Scribed an 8" Fir, "C 1/4 S4 - BT" which bears N 82° 20' W, 12.5 feet to the face of the lower blaze.

At the Northeast one-sixteenth Section Corner of said Section 4, set a 3/4" x 36" galvanized iron pipe, 33" in the ground for corner, from which:

Scribed an 11" White Oak, "NE 1/16 S4 - BT" which bears S 4° 20' E, 64.1 feet to the face of the lower blaze;

Scribed a 17" White Oak, "NE 1/16 S4 - BT" which bears S 62° 40' W, 97.1 feet to the face of the lower blaze.

At the Center-East one-sixteenth Section Corner of said Section 4, set a 3/4" x 36" galvanized iron pipe, 33" in the ground for corner, from which:

Scribed a 6" White Oak, "CE 1/16 S4 - BT" which bears N 59° 50' W, 38.9 feet to the face of the lower blaze;

## SURVEY NARRATIVE TO COMPLY WITH O.P.S. 209.250

FOR: Boise Cascade Corporation  
North Pacific Highway  
Medford, Oregon 97501

PURPOSE: To monument and reference Section subdivisional corners in Section 4, T35S, R2W, W.M.

PROCEDURE: Enclosed the East-half of said Section 4 by random - chain traverse. Also traversed around the remaining exterior boundaries of Boise Cascade Corp. ownership in said Section 4, excepting the West and South boundaries of the Southwest Quarter of said Section 4.

The tie to the West 1/4 corner of Section 4 was made from Meadows Road near the East Quarter corner of Section 4 by triangulation, with all 3 angles measured and all distances measured with the HP 3800 A Distance Meter.

Computed the coordinate adjustments for said random traverses, and then monumented the desired corners as shown on the map to accompany this report.

At the North one-sixteenth Section Corner common to Sections 4 and 5, set a 3/4" x 36" galvanized iron pipe, 33" in the ground for corner, from which:

Scribed an 18" Laurel, "N 1/16 S5-BT" which bears S 19° 20' W, 33.6 feet to the face of the lower blaze;

Scribed an 11" Laurel, "N 1/16 S 5 - BT" which bears S 89° 30' W, 26.0 feet to the face of the lower blaze;

Scribed a 5" White Oak, "N 1/16 S 4 - BT" which bears N 20° E, 23.3 feet to the face of the lower blaze.

At the West one-sixteenth Section corner common to Sections 33 and said Section 4, Set a 3/4" x 36" galvanized iron pipe, 33" in the ground for corner, from which:

Scribed a 9" White Oak, "W 1/16 S33 - BT" which bears N 57° W, 45.7 feet to the face of the lower blaze;

Scribed a 10" White Oak, "W 1/16 S4-BT" which bears S 85° 20' E, 22.9 feet to the face of the lower blaze;