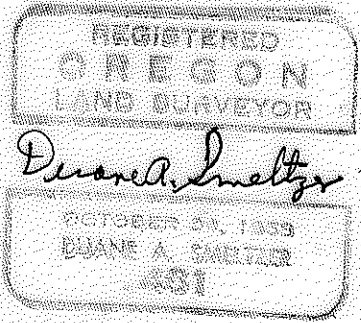
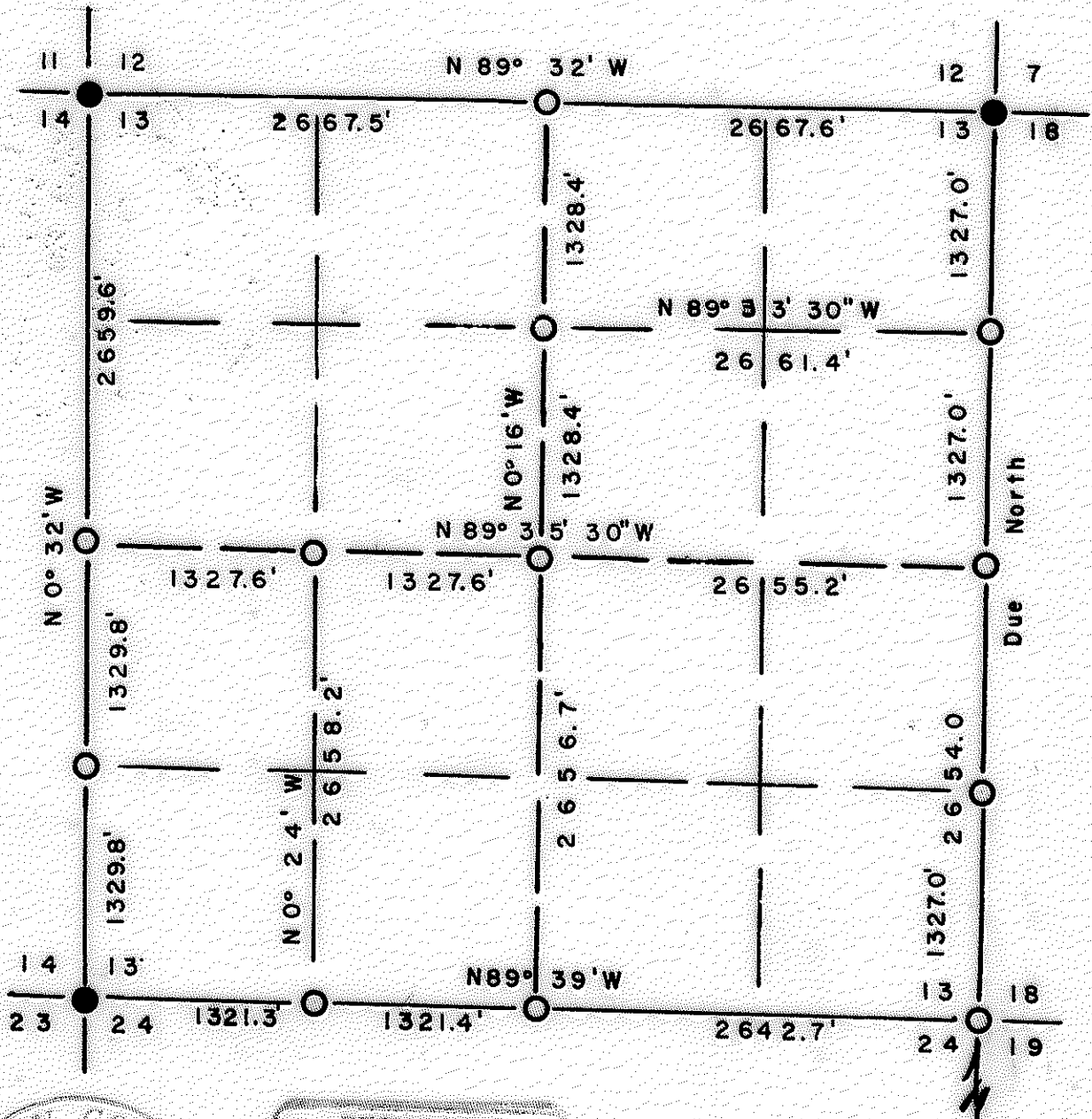


4618

4618

SECTION PLAT S. 13, T. 34S, R. 1E, W.M.



Scale 1" = 1000'
 Alum. Cap
 County Br. Cap
 10-71.



4618

REGISTERED
OREGON
LAND SURVEYOR

SECTION 13, TOWNSHIP 34 SOUTH, RANGE 1 EAST,
WILLAMETTE MERIDIAN.

Duane A. Smeltzer
10-71.

NARRATIVE: For Medco. To locate and monument Medco lands.

OCTOBER 24, 1958
DUANE A. SMELTZER
461

Found following evidence:

- NW corner County Surveyor Br. Cap, BTs, orig. evidence.
- NE " " " " "
- SW " " " " , SE, NE orig. BTs.
- SE " NW Oak BT upper face opened, rotted.
- SW Pine BT dead, scribes visible.

Ran Transit and chain survey around exterior boundaries. Solar bearings.

JACKSON COUNTY
RECORDED
OCT 6 1971
SURVEYOR

NORTH LINE: Bearing N89°32'W.
 0.0 feet NE corner C.S. Br. Cap.
 2667.6 " Set 1/4 corner S. 12/13 5/8" rebar Alum. Cap.
 Scribed 1/2 S12 RS 461 BT 7" D.Fir N9°W 36.9'.
 " 1/2 S13 " 9" " S10°W 6.3'.
 5335.1 " NW corner C.S. Br. Cap.

WEST LINE: Bearing S6°32'E.
 0.0 feet NW corner.
 2659.6 " Set 1/4 corner S. 14/13. 5/8" rebar Alum. Cap.
 Scribed 1/2 S13 RS 461 BT 8" Y. Pine S5°E 31.3'.
 " 1/2 S14 " 8" " N21°W 46.0'.
 3989.4 " Set S 1/16 S. 14/13. 5/8" rebar Alum. Cap.
 Scribed S1/16 S14 RS 461 BT. 6" D.Fir N38°W 27.5'.
 " " S13 " 13" " S8°E 11.4'.
 5319.2 " SW corner. C.S. Br. Cap.

SOUTH LINE: Bearing. S89°39'E.
 0.0 feet SW corner.
 1321.3 " Set W 1/16 S. 13/24. 5/8" rebar Alum. Cap.
 Scribed W1/16 S13 RS 461 BT. 10" Madrone N7°W
 31.4'.
 " " S24 " 7" Mad. S24°W 57.4'.
 2642.7 " Set 1/4 corner S. 13/24. 5/8" rebar Alum. Cap.
 Scribed 1/2 S 13 RS 461 BT 12" Y.Pine N63°W 75.1'.
 " 1/2 S 24 " 7" W.Oak S83°E 21.8'.
 5285.4 Orig. SE corner. Set 5/8" rebar Alum. Cap.
 Scribed S 13 RS 461 BT. 11" Y.Pine N19°W 46.9'.
 " S 18 " 9" " N25°E 49.3'.
 " S 19 " 10" " S62°E 67.1'.
 " S 24 " 5" W.Oak S25°W 16.9'.

EAST LINE: Bearing. Due North.
 0.0 feet SE corner.
 1327.0 " Set S 1/16 S. 13/18. 5/8" rebar Alum. Cap/
 Scribed S 1/16 S. 13 RS 461 BT 10" D.Fir N46°W
 18.7'.
 " " S. 18 " 8" " N67°E
 5.8'.
 2654.0 " Set 1/4 corner S. 13/18. 5/8" rebar Alum. Cap.
 Scribed 1/2 S 13 RS 461 BT. 8" D.Fir S57°W 42.9'.
 " 1/2 S 18 " 7" " S20°E 3.7'.
 3981.0 " Set N 1/16 S. 13/18. 5/8" rebar Alum. Cap.
 Scribed N 1/16 S13 10" D.Fir N73°W 48.8'.
 " " S18 RS 461 BT. 14" S.Pine N4°E
 18.8'.
 5308.0 " NE corner.

INTERIOR LINES: N-S Centerline- N0°16'W 5313.5'. E-W Centerline- N89°35'30"W 5310.4'. Beginning at N 1/16 S.13/18 ran N89°33'30"W 2661.4' to CN 1/16 S. 13. Set Alum. Cap in rock face, scribed CN 1/16 S13 RS 461 BT. 12" W.Oak S63°W 67.6'. From CN 1/16 S13 ran S0°16'E 1328.4' to C1/4 S13. Set 5/8" Alum. Cap Scribed C1/4 S13 RS 461 BT 12" D. Fir N62°E 6.5', 12" D.Fir S31°E 12.3'. From C1/4 S13 ran N89°35'30"W 1327.6' to CW 1/16 S13. Set 5/8" rebar Alum Cap. Scribed CW 1/16 S13 RS 461 BT 15" D.Fir S63°E 25.8', 13" D.Fir N5°E 14.7'. From CW 1/16 S13 ran S6°24'E 2658.2' to W1/16 S13/24.