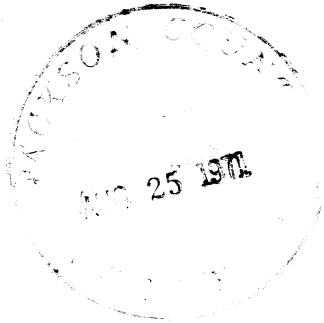
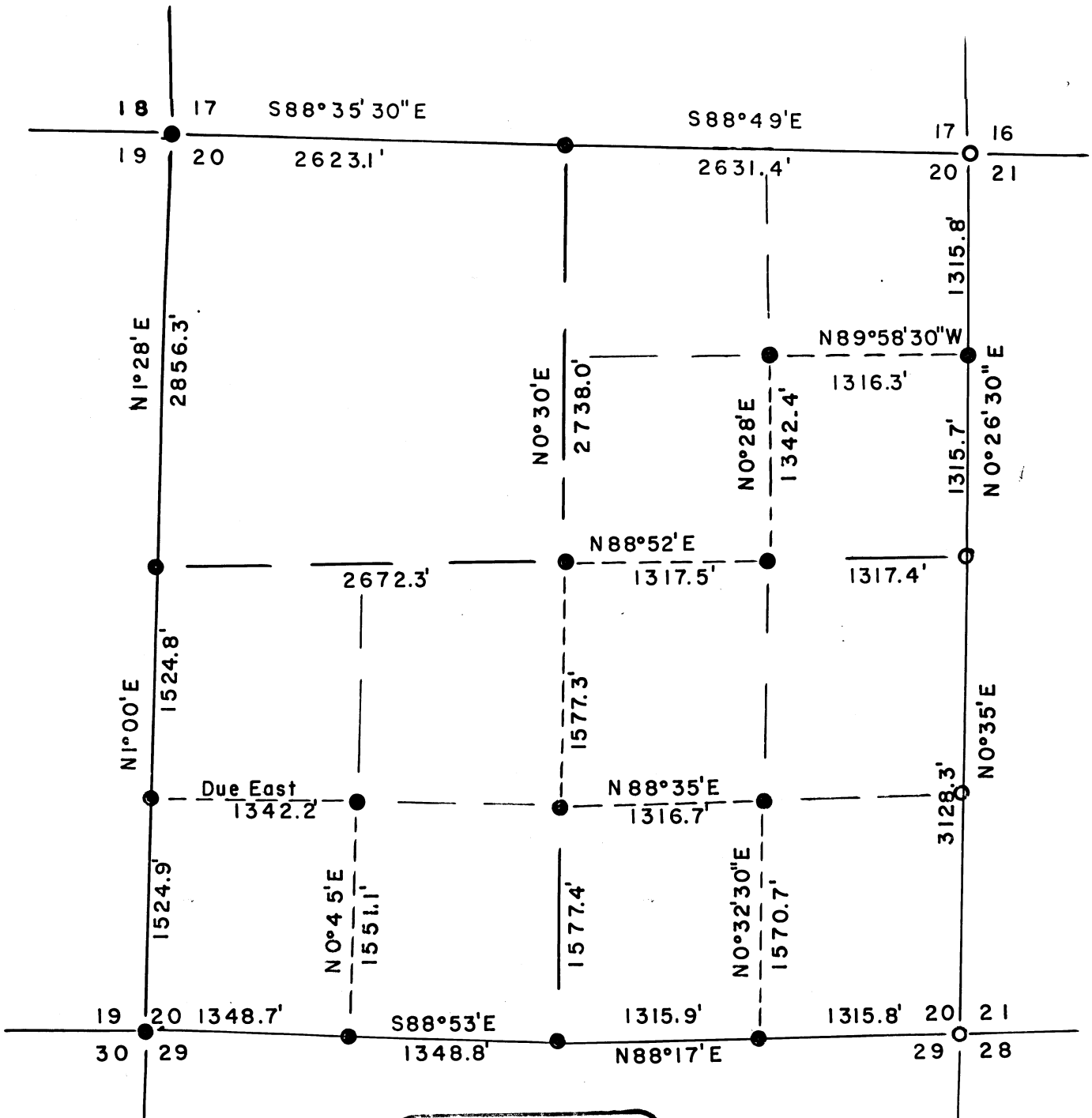


4601

1097

Sec. 20, T. 35 S., R. 2 E., W. M.



REGISTERED
OREGON
 LAND SURVEYOR

Duane A. Smeltzer

OCTOBER 24, 1958
 DUANE A. SMELTZER
 461

- 7-71
- 1" = 1000'
- Alum. Cap
- US Br. Cap

4601

SECTION 20, TOWNSHIP 35S, RANGE 2E, WILLAMETTE MERIDIAN.

NARRATIVE: Object; For Medford Corporation. To locate and monument Medco lands.

Found following evidence:

- NW corner RS 461 5/8" rebar and Aluminum Cap, BTs, 2 orig. BTs.
- N 1/4 " " " "
- N 1/16 corner 20/21 " " "
- NE corner U. S. Brass Cap, BTs.
- E 1/4 corner " , 1 original BT stub, scribes.
- S 1/16 corner 20/21 " " "
- SE corner " , original BTs.
- S 1/4 corner 2 original BTs, opened S29 BT, scribes.
- SW corner intersection of blazes, old cruisers marks. 2 original BTs which do not fit record calls. Record calls for this corner identical or similar to calls for corner found 1 mile south. Faces old enough for survey.
- Found: 36" Y. Pine 30.3' S19°03'30"W. Scribes visible.
- 30" Y. Pine 22.3' N75°01'30"W. " " "
- W 1/4 corner 1 original BT, dead, scribes visible.

Ran closed transit and chain traverse around exterior boundary. Solar Bearings.

NORTH LINE: Bearing West half; S88°35'30"E.

- 0.0 feet NW corner, Aluminum Cap RS 461
- 2623.1 " N 1/4 corner, " " "
- Bearing East half; S88°49'E.
- 5254.6 " NE corner, Brass Cap.

EAST LINE: Bearing North half, S0°26'30"W.

- 0.0 feet NE corner.
- 1315.8 " N 1/16 corner 20/21, Alum. Cap. RS 461.
- 2631.5 " E 1/4 corner Brass Cap.
- Bearing South half, S0°35'W.
- 4195.6 " S 1/16 corner 20/21, Brass Cap.
- 5759.8 " SE corner, Brass Cap.

SOUTH LINE: Bearing East half. S88°17'W.

- 0.0 feet SE corner
- 1315.8 " E 1/16 20/29. Set 5/8" rebar, Alum. Cap, RS 461.
- Scribed RS 461 BT,
- E 1/16 S29 6" Cedar S12°0E 40.9'
- E 1/16 S20 9" Cedar N22°0E 29.8'
- 2631.7 " S 1/4 corner. Set 5/8" rebar, Alum. Cap.
- Scribed RS 461 BT,
- 1/4 S29 10" Cedar S40°0E 9.5'.
- 1/4 S20 10" B. Oak Due North 9.2'.
- Bearing West half. N88°53'W.
- 3980.5 " W 1/16 20/29. Set rebar, Alum. Cap.
- Scribed RS 461 BT.
- W 1/16 S20 8" B. Oak N16°0E 44.2'.
- W 1/16 S29 13" W. Oak Due East 20.5'.
- 5329.2 " SW corner. Set 5/8" rebar, Alum. Cap
- Scribed RS 461 BT.
- S19 10" Madrone N64°0W 23.5'.
- S20 26" D. Fir N50°0E 12.5'.
- S29 7" Cedar S42°0E 21.1'.
- S30 7" Cedar S6°0W 10.9'.

WEST LINE: Bearing, South half, N1°00'E.

- 0.0 feet SW corner.
- 1524.9 " S 1/16 corner 19/20. Set rebar, Alum. Cap.
- Scribed RS 461 BT,
- S 1/16 S19 7" W. Oak N8°0W 71.3'.
- S 1/16 S20 4" B. Oak Due South 7.5'.
- 3049.7 " W 1/4 corner. Set rebar, Alum. Cap ,
- Scribed RS 461 BT,
- 1/4 S19 9" Y. Pine S59°0W 69.1'.
- 1/4 S20 8" Cedar S67°0E 19.1'.

(cont.)

Bearing North half. N1°28'E.
5906.0 feet NW corner.

INTERIOR LINES:

Beginning at N 1/16 20/21 ran N89°58'30"W 1316.3' to NE 1/16 corner.
Set 5/8" rebar, Alum. Cap. Scribed NE 1/16 S20 10" D. Fir N81°E 14.2'. RS 461
" " " 7" D. Fir N64°W 24.8'. BT,

From NE 1/16 ran S0°28'W 1342.4' to CE 1/16 corner. Set rebar, Alum.
Cap, scribed CE 1/16 S20 RS 461 BT, 8" D. Fir N39°E 27.1',
7" Cedar S27°E 5.0'.

From CE 1/16 corner ran S88°52'W 1317.5' to C $\frac{1}{2}$ corner. Set rebar and
Alum. Cap. Scribed C $\frac{1}{2}$ S20 RS 461 BT, 11" D. Fir N20°E 17.7' and 10" B. Oak
S53°W 18.7'.

From C $\frac{1}{2}$ corner ran S0°30"W 1577.3' to CS 1/16 corner. Set rebar, Alum.
Cap. Scribed CS 1/16 S20 RS 461 BT., 10" W. Oak N62°E 82.8' and 15" Y. Pine
S6°E 91.8'.

From CS 1/16 corner ran N88°35'E 1316.7' to SE 1/16 corner. Set rebar,
Alum. Cap, scribed SE 1/16 S20 RS 461 BT., 5" Cedar N23°W 17.4', 12" D.
Fir S14°E 8.2'.

From SE 1/16 corner ran S0°32'30"W 1570.7' to E 1/16 S20/S29, set
rebar, Alum. Cap, scribed E 1/16 S20 RS 461 BT, 9" Cedar N22°E 29.8', and
E 1/16 S29 RS 461 BT 6" Cedar S12°E 40.9'.

From S 1/16 S19/S20 ran Due East 1342.2' to SW 1/16, set rebar, Alum.
Cap, scribed SW 1/16 S20 RS 461 BT an 8" Y. Pine N23°W 7.2' and a 9"
Y. Pine S65°W 21.0'.

From SW 1/16 corner ran S0°45'W 1551.1' to W 1/16 S20/S29, set rebar,
Alum. Cap, scribed W 1/16 S20, 8" B. Oak N16°E 44.2' and W 1/16 S29 a 13"
W. Oak Due East 20.5'.

