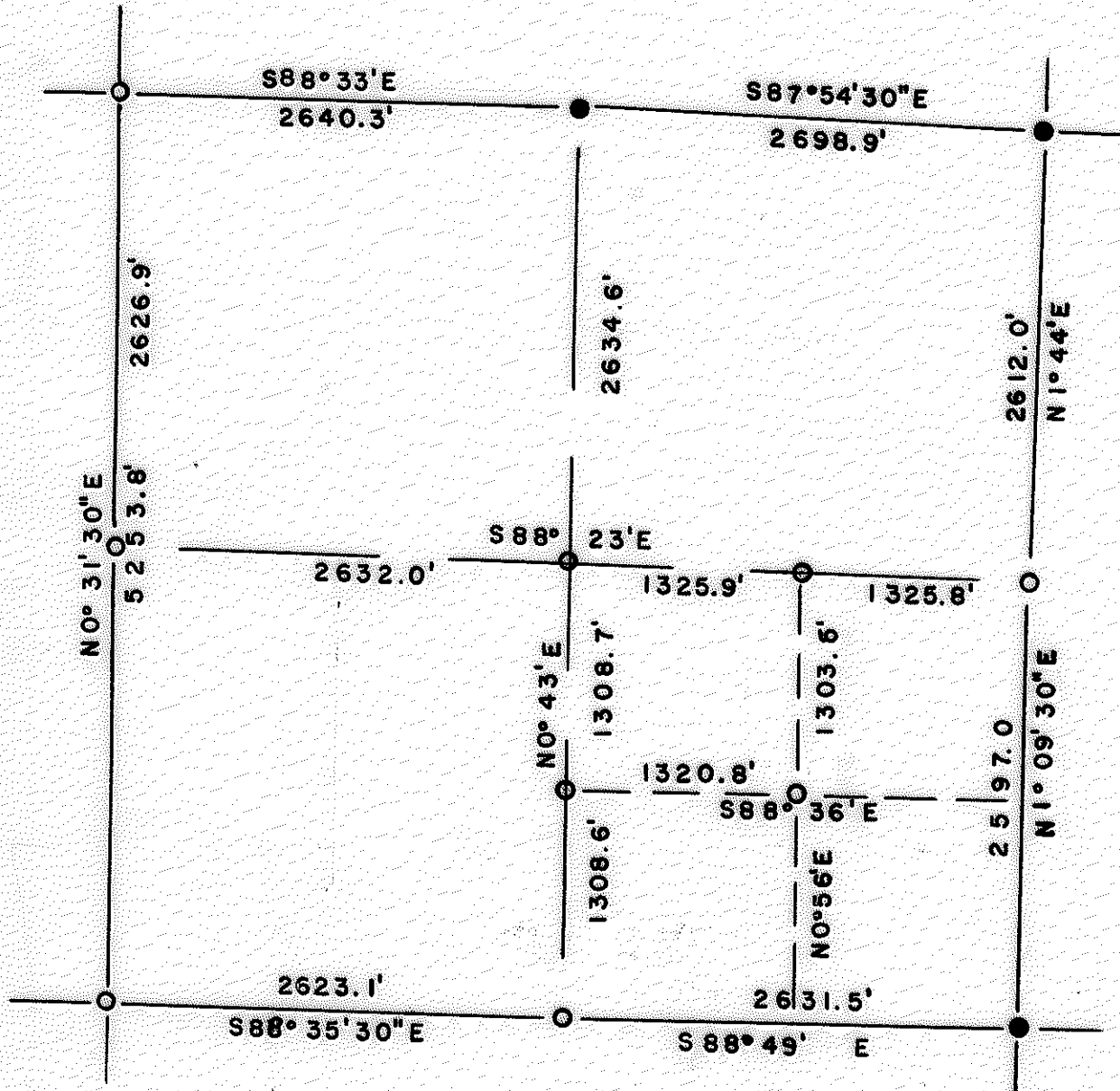


Sec. 17, T. 35S, R. 2E, W.M.



Scale 1"=1000'

- Brass Cap
  - Alum. Cap
- 6-71



REGISTERED  
OREGON  
LAND SURVEYOR

*Duane A. Smeltzer*

OCTOBER 24 1958  
DUANE A. SMELTZER  
461



SECTION 17, T. 35S., R. 2E., Will. Meridian. 6-71.

NARRATIVE: For Medford Corporation. To locate and monument boundaries of NW 1/4 of SE 1/4 Sec. 17, T. 35S., R. 2E., W.M.

Found; NW corner. RS 461 BTs, Alum. Cap, rebar.  
 E 1/4 " " " " , 1 orig. BT.  
 SW " " " " , 2 orig. BTs.  
 W 1/4 " " " " .  
 N 1/4 " U.S. Brass Cap, BTs.  
 NE " " " " .  
 SE " " " " .  
 S 1/4 " Original BTs.

Ran exterior boundaries, closed Transit and chain traverse, solar bearings.

NORTH LINE: West half, S88°33'E.  
 0.0 feet NW corner. Alum. cap.  
 2640.3 " N 1/4 corner. US Brass cap.  
 East half, S87°54'30"E.  
 5339.2 " NE corner. US Brass cap.

EAST LINE: North half, N1°44'E.  
 0.0 feet NE corner.  
 2612.0 " E 1/4 corner. RS 461 Alum. cap.  
 South half, N1°09'30"E.  
 5209.0 " SE corner. US Brass cap.

SOUTH LINE: East half. S88°49'E.  
 0.0 feet SE corner.  
 2631.5 " S 1/4 corner. Set 5/8"x30" rebar, Alum. cap.  
 Scribed RS 461 BT 1/4 S17/S20.  
 8" D. Fir S62°W 28.1'  
 7" Cedar N24°E 42.7'.  
 West half. S88°35'30"E.  
 5254.6 " SW corner. Alum. cap.

West LINE: Bearing N0°31'30"E.  
 0.0 " SW corner.  
 2626.9 " W 1/4 corner. Alum. cap.  
 5253.8 " NW corner. " " .

N-S Center Line: Bearing N0°43'E.  
 0.0 feet S 1/4 corner.  
 1308.6 " CS 1/16 corner Set rebar, Alum. cap.  
 Scribed RS 461 BT CS 1/16 S 17  
 11" D. Fir N29°E 31.0'.  
 12" D. Fir S80°W 24.1'.  
 2617.3 " C 1/4 corner. Set 5/8" rebar, Alum. cap.  
 Scribed RS 461 BT C 1/4 s.17.  
 8" W. Oak S73°E 34.5'  
 11" D. Fir S16°W 38.3'.  
 5251.9 " N 1/2 corner.

E-W CENTER LINE: Bearing N88°23'W  
 0.0 feet E 1/4 corner.  
 1325.8 feet CE 1/16 corner. Set rebar, Alum. cap.  
 Scribed RS 461 BT CE 1/16 S 17.  
 13" W. Fir S7°E 44.9'.  
 11" W. Fir N14°E 40.8'.  
 2651.7 " C 1/4 corner  
 5283.7 " W 1/4 corner.

SE 1/16 corner set 1303.6' S0°56'W of CE 1/16 corner, and 1320.8' S88°36'E of CS 1/16 corner. Set rebar and Alum. cap. Scribed RS 461 BT SE 1/16 S 17.  
 17" Y. Pine N54°W 131.5'.  
 6" W. Oak S21°W 65.8'.

