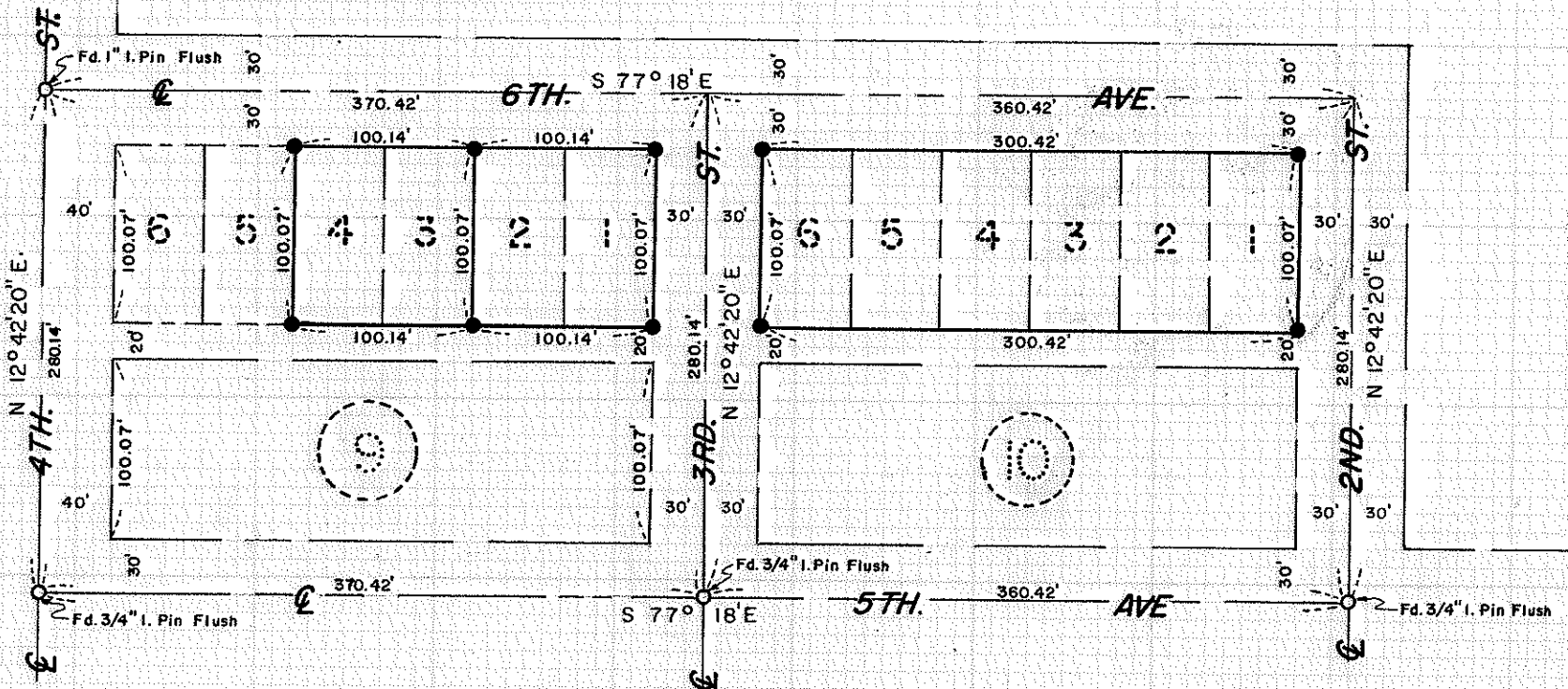


4545

Survey for

PLUMMER REALTY

Located in Blocks 9 & 10
 of the Original Townsite of Gold Hill
 in the SW 1/4, Sec. 15 and
 the NW 1/4, Sec. 22
 T. 36 S. R. 3 W., W.M.
 By: Mark E. Boyden
 May 24, 1971

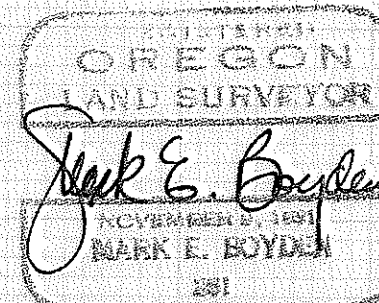
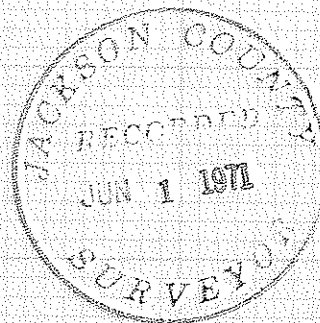


SCALE
 1" = 100'

Basis of Bearings

Recorded Survey No. 3891

- Found monument as indicated
- Set 3/4" x 24" iron pin flush



4545

Survey Narrative to Comply with O.R.S. 209.250

FOR: Plummer Realty
520 Second Avenue
Gold Hill, Oregon

PURPOSE: To monument lot corners in Blocks 9 and 10 of the Original Townsite of Gold Hill.

PROCEDURE: Found controlling monuments previously utilized by this office on Recorded Survey Nos. 2283 and 3891. Enclosed Blocks 9 and 10 on the Street centerlines and then proportioned in the lot corner positions as shown on map to accompany this report.

Monuments were found near the lot corners monumented in in Block 10 but were disregarded as the survey was not recorded.

May 24, 1971

