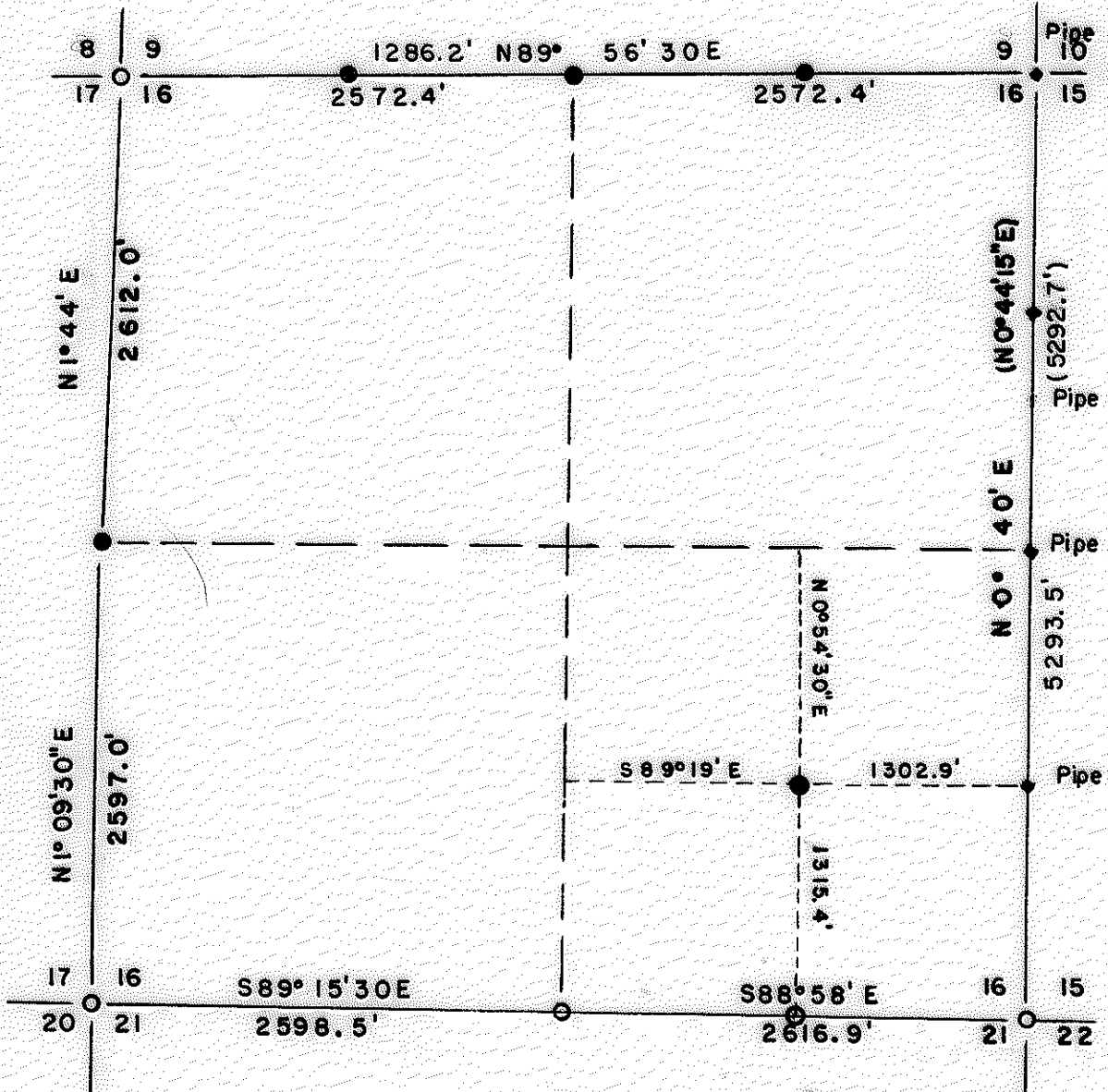


4544

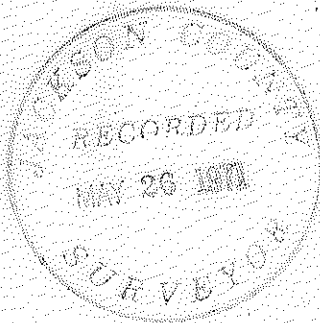
4544

PLAT S. 16, T. 35S, R. 2 E, W. M.



Date 4-25-71  
Scale 1"=1000'

Brass Cap ○  
Rebar AL. Cap ●



REGISTERED  
OREGON  
LAND SURVEYOR

*Duane A. Smeltzer*

OCTOBER 24, 1958  
DUANE A. SMELTZER  
461

4544

1  
N

SURVEY FOR MEDFORD CORPORATION: Section 16, T35S, R2E, Will. Merid.

Object; To monument  $N\frac{1}{4}$  corner and W 1/16 & E 1/16 between S.9/16.

Began transit and chain survey, Solar bearings, 11/70.  
 Found: NW sec. corner Brass Cap and BTs.  
 $N\frac{1}{4}$  corner, No BTs, approx. stake.  
 NE sec. corner; - 4 BTs originals, do not fit record calls,  
 Medco pipe. 36" D. Fir S7°W 35.9', scribed.  
 40" " S28°E 14.6', face not opened.  
 28" " N69°E 50.3', scribed  
 40" " N57°W 85', face, burned stump.  
 $W\frac{1}{4}$  corner, Original West Maple BT, reverse scribes.  
 SW sec. corner, Brass Cap, BTs.  
 $S\frac{1}{4}$  corner, "  
 SE " "  
 $E\frac{1}{4}$  corner, Medco pipe, RS 461 BTs.

Ran West and North section lines, used previous recorded survey work (RS 461) for South and East lines (#3596) to close traverse.

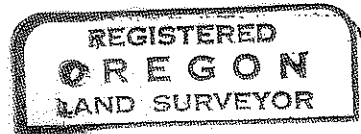
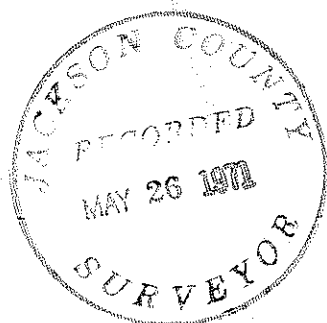
NORTH LINE: Bearing N89°56'30"E.  
 0.0 feet NW corner Brass Cap.  
 1286.2 " W 1/16 S.9/16, set 5/8" rebar, Aluminum Cap.  
 Scribed RS 461 BT 6" S. Pine N37°W 6.0'  
 10" D. Fir S37°W 30.3'  
 2572.4 "  $N\frac{1}{4}$  corner. Set 5/8" rebar, Alum. Cap.  
 Scribed RS 461 BT S9 12" D. Fir N4°W 47.3'.  
 S16 14" " S28°W 6.8'.  
 3858.6 " E 1/16 S.9/16, Set 5/8" rebar, Alum. Cap.  
 Scribed RS 461 BT 10" Ore. Ash N75°E 96.3'.  
 6" D. Fir S73°W 113.0'.  
 5144.8 " SE section corner, Brass Cap.

WEST LINE: Bearing S1°44'W.  
 0.0 feet NW corner  
 2612.0 "  $W\frac{1}{4}$  corner. Set 5/8" rebar, Alum. Cap.  
 Scribed RS 461 BT. S16 6" W. Fir S78°E 31.5'.  
 S17 13" D. Fir N2°W 44.6'.  
 Bearing  $W\frac{1}{4}$  corner South, S1°09'30"W.  
 5209.0 " SW corner, Brass Cap, BTs.

SOUTH LINE: (Survey #3596) Bearing S89°15'30"E.  
 0.0 " SW corner.  
 2598.5 "  $S\frac{1}{4}$  corner, Brass Cap, BTs.  
 $S\frac{1}{4}$  corner East, bearing S88°58'E.  
 5215.4 " SE corner, Brass Cap, BTs

EAST LINE: Bearing, N0°40'E (old N0°44'15"E).  
 5293.5' (old 5292.7')  
 $E\frac{1}{2}$  & N&S 1/16 corners set previously midway on line, pipes.

SE 1/16, Alum. Cap, rebar set N89°19'W 1302.9' from S 1/16 Sec. 16/15 and N0°54'30"E 1315.4' from E 1/16 Sec. 16/21. Scribed SE 1/16 RS 461 BT:  
 10" W. Fir N70°E 39.5'.  
 12" Cedar S35°E 26.5'.



*Duane A. Smeltzer*  
 OCTOBER 24, 1958  
 DUANE A. SMELTZER  
 461