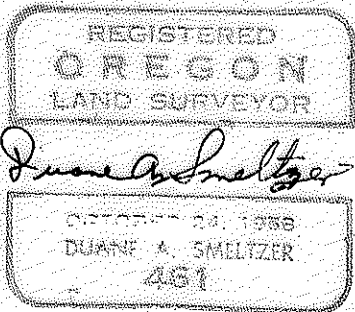
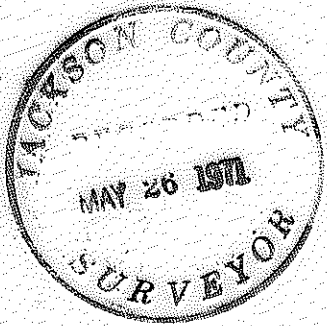
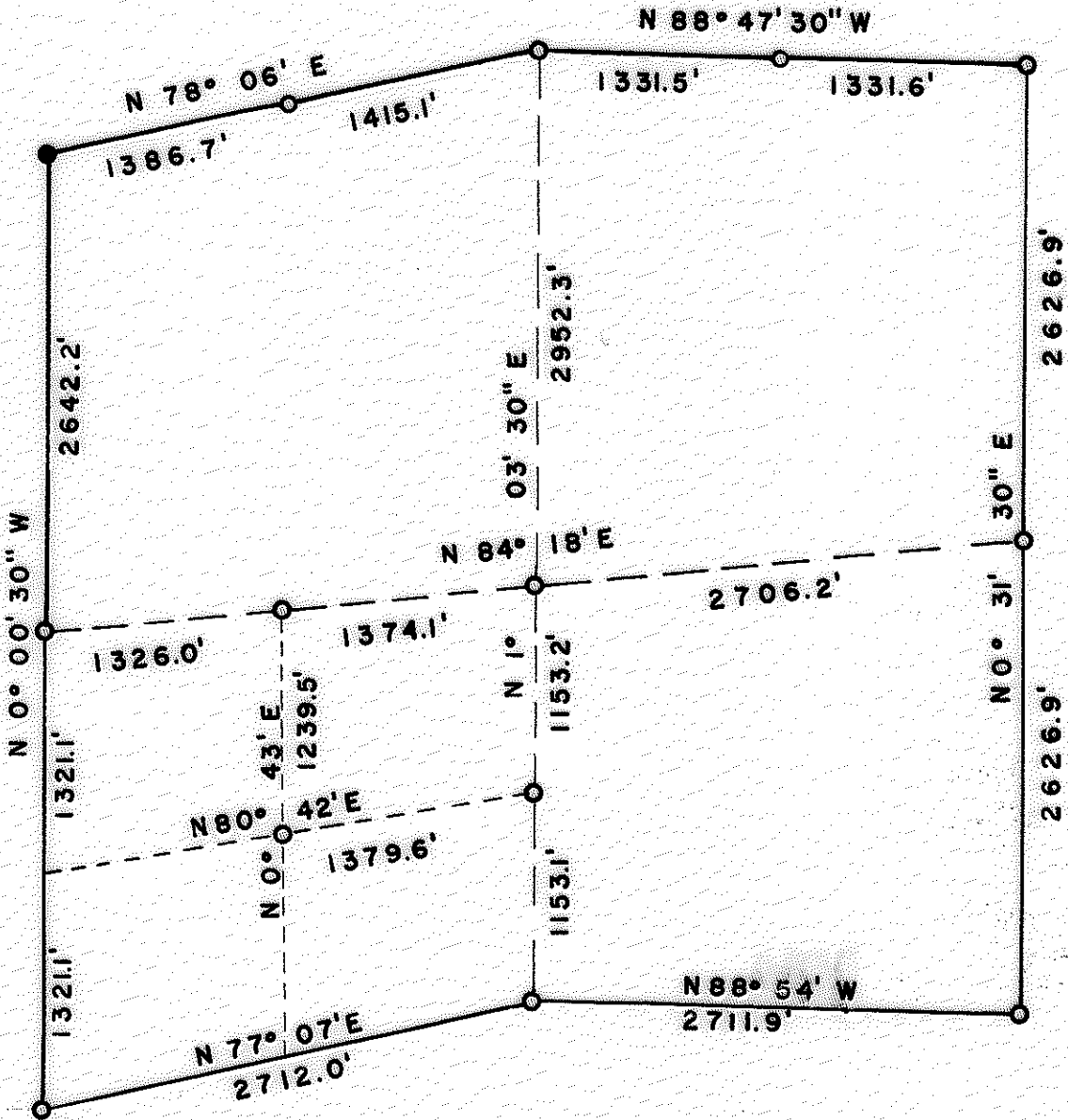


4543

PLAT SECTION 18 TWP. 35 S R. 2 E.

15413  
3754



DATE MAY 2, 1971  
 SCALE 1" = 1000'  
 BRASS CAPS ●  
 ALUM CAPS ○  
 REBAR

4543

NARATIVE: Section 18, T. 35S., R. 2E., W. M. (cont.)

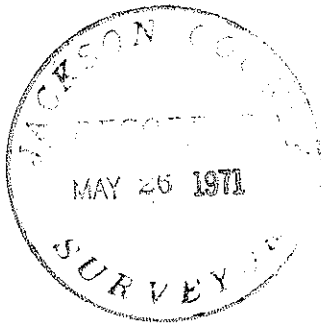
SOUTH LINE: Bearing west  $\frac{1}{2}$ . N77°07'E.  
 0.0 feet SW corner.  
 2712.0 "  $S\frac{1}{4}$  corner. Set Al. Cap. Scribed RS 461 BT.  
 S.18 10" D.Fir N27°E 52.9'. S.19 14" W.Fir S15°E 13.8'.  
 Bearing East  $\frac{1}{2}$ . S88°54'E.  
 5423.9 " SE corner. Set Al. Cap. Scribed RS 461 BT.  
 S.19 6" D.Fir S89°W 54.0'. S.20 16" D.Fir S56°E 53.7'.  
 S.17 20" Madrone N75°E 38.5'.

EAST LINE: Bearing N0°31'30"E.  
 0.0 feet SE corner.  
 2626.9 "  $E\frac{1}{4}$  corner. Set Al. Cap, rebar. Scribed RS 461 BT.  
 S.18 7" Cedar N36°W 5.8'. S.17 10" D.Fir S30°E 22.3'.  
 5253.8 " NE corner.

NORTH-SOUTH Center-line. Bearing S1°03'30"W.  
 0.0 feet  $N\frac{1}{4}$  corner.  
 2952.3 "  $C\frac{1}{4}$  corner. Set Al. Cap, rebar. Scribed RS 461 BT.  
 7" D.Fir N42°E 2.0'. 7" D.Fir S46°W 18.2'.  
 4105.5 " CS 1/16 corner. Set Al. Cap, rebar. Scribed RS 461 BT.  
 10" DFir N84°E 21.9'. 10" D.Fir N70°W 7.9'.  
 5258.6 "  $S\frac{1}{4}$  corner.

EAST-WEST Center-line. Bearing N84°18'E.  
 0.0 feet  $W\frac{1}{4}$  corner.  
 1326.0 " CW 1/16 corner. Set Al. Cap, rebar. Scribed RS 461 BT.  
 11" D.Fir S20°E 2.3'. 9" D.Fir S82°E 18.2'.  
 2700.1 "  $C\frac{1}{4}$  corner.  
 5406.3 "  $E\frac{1}{4}$  corner.

SW 1/16 corner set S80°42'W 1379.6' of CS 1/16 corner  
 and S0°43'W 1239.5' of CW 1/16 corner. Set Al. Cap, rebar,  
 scribed RS 461 BT.  
 9" D.Fir S82°W 31.9'. 9" D.Fir N61°E 33.8'.



NARATIVE:

OBJECT: For Medford Corporation. To subdivide out Medco lands. Transit and Chain survey. Solar bearings. Began survey 6-70.

Observations: Nathaniel Ford survey, 1855. To get a better grasp of corner situation have run out lines around sections 16,17,18,19,20 along with prior work done in 15,21,22,23 & 24. Evidence found indicates Ford set 1/4 corners for West tier of sections by stubbing 40 chains West from East section corners without tying to West Township corners. Also stubbed some 1/4 corners at 40 chains North and South from section corners. North line of Section 7 also indicates this.

To place south 1/4 corner Sec.18, assumed Ford ran West 40 chains from SE corner as was found along North lines of sed. 7,18 and 30. Could follow line of 40 and 80 year old blazes West out of SE corner. Chopped out original line blazes along this line at coordinate distances at 420.4', 1391.7', 1586.2', and 2307.9'. Bearings between blazes are S86°16'30"W, N88°37'30"W, N87°32'W and N88°44'W. S 1/4 corner set N88 54'W 40/79 x south line coordinate distance from SE corner.

Found following original evidence.

- NW corner- Brass cap, BTs.
- N 1/4 " Found 2 Oak BTs set by Jas. Jeffreys, Jackson County Surveyor, 4/4/1885. See County Survey Records vol.1 p. 80 #72. Faces rotted out. From set corner point S55°E 77 lks(record dist. and bearing) found burned Pine stump (original BT).
- NE corner- Pipe, no BTs. Homestead activity. Old blazes and fences intersect. E. W. Smith, Butte Falls, Ore. retired Medco Engineer, states having been along line between 7/8 and to 1/4 cor. 7/8 around 1917 in connection with Rail Road and remembers having found evidence of NW BT for NE corner Sec.18. 1/4 corner to East bears S88°33'E 2640.3', 1/4 Corner to West bears N88°47'30"W 2663.1'. Line south bears S0°31'30"W, line to north bears approximately N1°W. 1885 line blazes done by County Surveyor, J. Jeffreys are evident (Ran North and West).
- SE corner- Found NW Cedar BT and scribes. NE Fir BT not opened.
- SW " Found NW Oak BT, down scribes. NE Y.Pine BT stump. SE Oak BT stump hole.

NORTH LINE: Bearing E 1/2 N88°47'30"W.

0.0	feet	NE corner. Set Al. Cap, rebar 5/8". Scribed RS 461 BT.
		S. 18 15" Cedar S46°W 39.5' S.7 9" Y. Pine N78°W 38.5'
		S. 8 8" W. Oak N19°E 17.8' S.17 12" Y.Pine S82°E 28.0'
1331.6	"	E 1/16 7/18. Set Al. Cap, 5/8"rebar. Scribed RS 461 BT.
		S. 7 8" Y.Pine N78°E 87.4' S.18 8" W.Oak S52°E 62.5'
2663.1	"	N 1/4 corner. Set Al. Cap, 5/8"rebar. Scribed RS 461 BT.
		S.7 8" W.Oak Due E 21.3' S18 14" Y.Pine S6°E 44.0'
		Bearing W 1/2 N78°06'E.
4078.2	"	W 1/16 S7/18. Set Al. Cap, rebar. Scribed RS 461 BT.
		S.7 5" D.Fir N70°E 11.8' S.18 5" D.Fir S18°E 19.5'
5464.9	"	NW corner. Brass Cap, BTs.

WEST LINE: Bearing N0°00'30"W.

0.0	"	NW corner.
2642.2	"	W 1/4 " Set Al. Cap, rebar. Scribed RS 461 BT.
		S.13 10" D.Fir S38°W 10.7' S.18 15" D.Fir N49°E 21.2'
5284.4	"	SW corner. Set Al. Cap, rebar. Scribed RS 461 BT.
		S.18 10" D.Fir N32°E 40.0' S13 6" D.Fir N27°W 14.8'
		S.24 6" D.Fir S50°W 5.5' S19 7" D.Fir N83°E 19.0'

(cont.)

