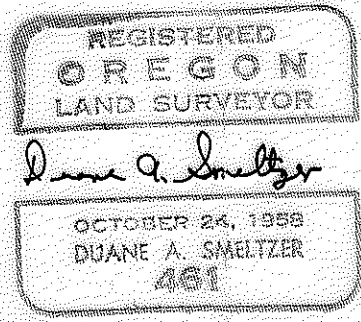
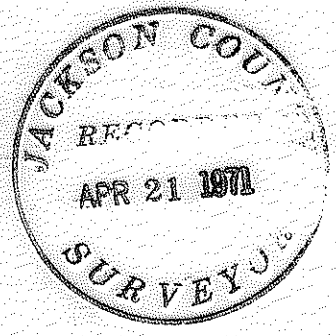
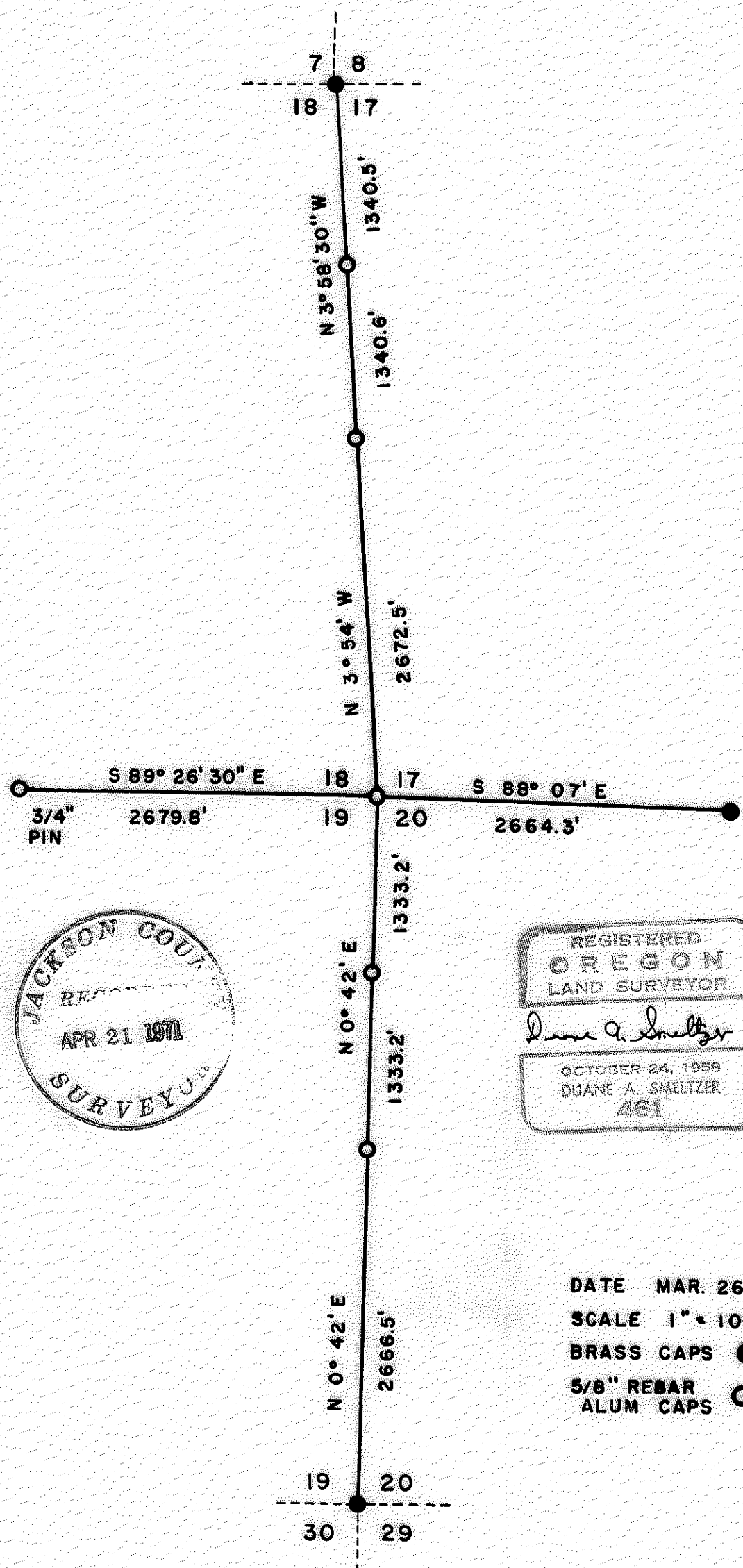


PLAT CORNER COMMON TO SECTIONS 17, 18, 19, & 20 TWP. 35 S, R3E W.M.



DATE MAR. 26, 1971
SCALE 1" = 1000'
BRASS CAPS ●
5/8" REBAR ALUM CAPS ○

3-26-71

NARRATIVE: Corner common to Sections 17,18,19,20, T.35S.,R3E.,W.M.

OBJECT: Ror Medford Corporation. To monument lost corner by double proportion, for property subdivision.

Began transit & chain survey 3-71. Solar bearings. Using previous work done for Jackson County Survey #4434 (S. 7& 18). Started at approximate corner S. 17,18,19,20 Hub ran south along line between Sec. 19/20 to Brass Cap corner Sec. 19,20,29,30,T35S,R3E. No 1/4 corner. Also starting from Hub S. 17,18,19,20 ran east between 17/20, to 1/4 corner S. 17/20 Brass Cap.

Double proportioned as follows;

For E-W control coordinate- 40.00 ch./39.75 ch.
5342.6'

For N-S control coordinate- 40.00 ch.
7998.8'
80.00 ch.

From corner S. 17,18,19,20 - S 1/4 Sec. 18 bears N89°26'30"W 2679.8'
S 1/4 " 17 " S88°07' E 2664.3'
E 1/4 " 18 " N3°54'W 2672.5'
E 1/4 " 19 " S0°42'W 2666.4'
Corner S.19,20,29,30 " " 5332.9'

At corner S. 17,18,19,20 set 5/8" rebar, Alum. Cap.
Scribed RS 461 BT S17 6" Cedar N34°E 1.6'.
" S18 6" Y. Pine N52°W 3.6'.
S19 8" W. Fir S64°W 11.7'.
S20 6" D. Fir S8°E 10.7'.

At 1/4 corner Sec. 19,20. Set 5/8" rebar, Alum. Cap.
Scribed RS 461 BT S19 12" Y. Pine S47°W 107.6'.
S20 10" " N30°E 79.5'.

At N 1/16 Sec. 19/20. Set 5/8" rebar, Alum. Cap. Bears N0°42'E 1333.2'
Scribed RS 461 BT 6" D. Fir S70°W 17.4'. from E 1/4 S.19.
12" Y. Pine N50°E 17.4'.

At N 1/16 Sec. 18/17. Set 5/8" rebar, Alum. Cap midway on line,
N3°58'30"W 1340.6' from 1/4 corner S.18/17.
Scribed RS 461 BT 10" Y. Pine N58°W 22.5'.
10" " S4°E 5.3'.

