

4464

4464

LAKE
OLD CARTER

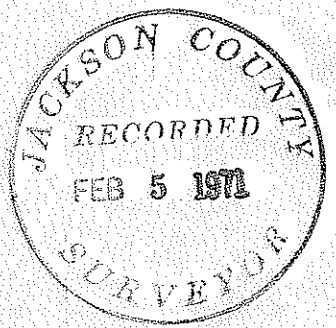
Fd. Mon. of intersection

ROBERTS ROAD

LOT 1

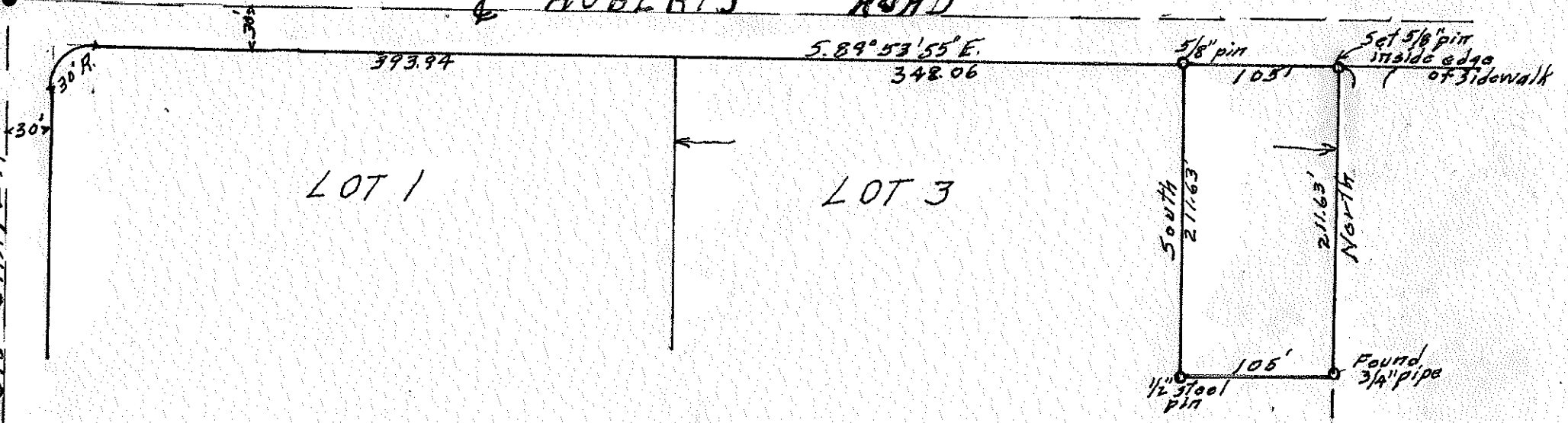
LOT 3

SURVEY
 FOR
 CECIL R. ROBERTS
 PORTION OF LOT 3, Block 3
 ROGUE VALLEY HEIGHTS EXT.
 JACKSON COUNTY, ORE.
 JAN., 1971 HUGH C. INGLE
 SCALE 1"=100' CIVIL ENGINEER



FOUND
1" pipe

4464



Jan. 30, 1971

Narrative to comply with O. R. S. 209 - 250

Survey For;

Cecil R. Roberts
2076 Roberts Road,
Medford, Oregon.

Basis of Bearings;

Recorded Plat.

Location of Survey:

Lot 3 , Block 3, Rogue Valley Heights Extension.

Purpose: To find and establish corners of portion of Lot 3.

Procedure:

Found monument marking intersection of center lines of Roberts Road and Old Crater Lake Highway , Also old 3/4" pipe monument marking the Southeast corner of surveyed tract by previous survey.

Also found marked point on curb , as marked by City Engineer Surveyors for distance from Crater Lake Highway center line. This marked checked by chaining for distance to Northeast corner of tract. Distance from Southeast corner checked to point 0.15 feet inside south edge of new sidewalk. Set 5/8" diameter steel pin here. From this point sighted to point 30 feet south of intersection of center lines of Crater Lake Avenue and Roberts Road and measured lot width and set 5/8" steel pin for Northwest corner of tract.

Then measured West from pipe at southeast corner and set sight point at distance for corner of lot width. Set on new pin at North west corner and sighted south to the sight point and measured tract distance and set 1/2" steel pin for Southwest corner.

