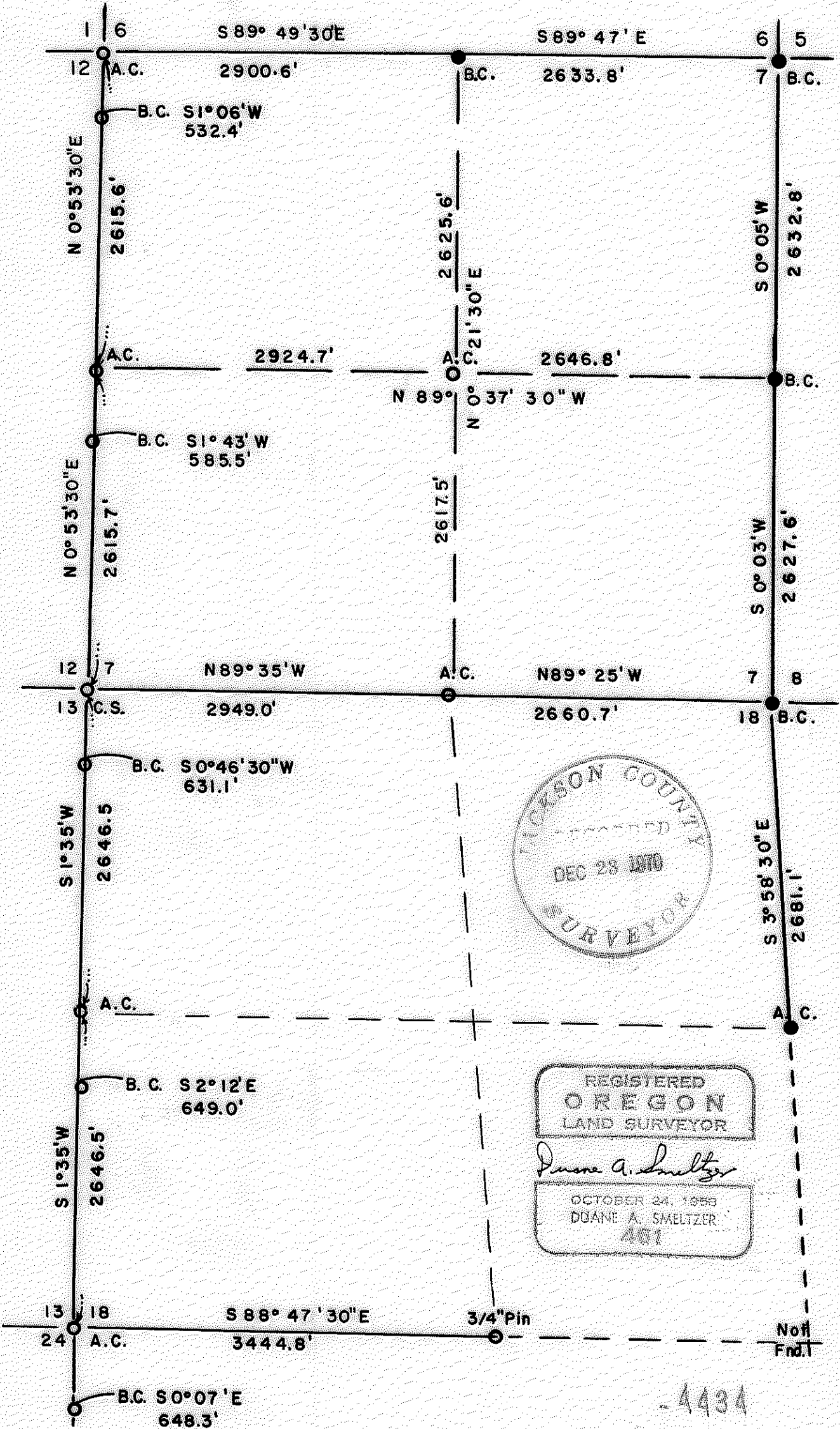


SECTION PLAT  
S. 7&18, T. 35S, R. 3E, W. M.

4434



4434

Section 18 cont.

5293.0 feet SW corner. Set 5/8"x30" rebar, Alum. cap. 1 probable BT stump. Original line blazes N-S, E-W.  
 Scribed S13 RS 461 BT 6" D. Fir N88°W 31.2'.  
 " S18 " 24" Y. Pine N51°E 46.1'.  
 " S19 " 6" Bl. Oak Due E 74.2'.  
 " S24 " 8" D. Fir S36°W 72.0'.

South Line;

0.0 feet SW corner. Alum. cap.  
 Bearing S88°47'30"E.  
 3444.8 " S 1/4 corner. Set 3/4"x6" rebar in black-top of Butte Falls-Fish Lake County Road. Fence comes in from South.  
 Scribed 1/4 S18 RS 461 BT 10" D. Fir N10°W 40.2'.  
 " S19 " 12" Y. Pine S74°W 43.3'.

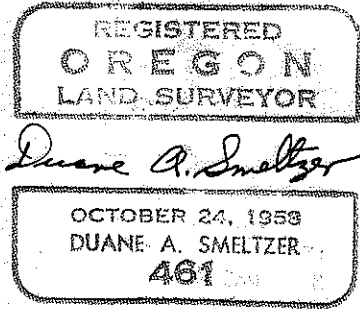
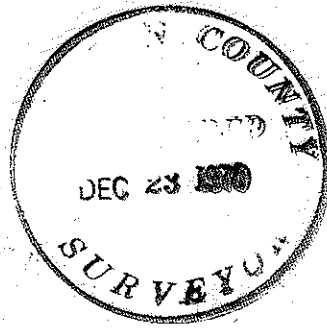
SE corner not found. These call BTs found by E.W. Smith one mile to South. Corner will have to be double proportioned in.

East Line;

0.0 feet NE corner. Brass cap.  
 Bearing S3°58'30"E.  
 2681.1 " E 1/4 corner. Stake, stones, 2 Original BTs, burned, scribes.  
 Set 5/8"x30" rebar, Alum. cap.  
 Scribed 1/4 S18 RS 461 BT 12" D. Fir N79°W 38.3'.  
 " S17 " 14" D. Fir N53°E 13.4'.

Unrecorded U. S. Brass Caps along West Range Line:

Aluminum Cap NW Sec. 7 to Brass Cap; S1°06'W 532.4'.  
 " W 1/4 " " S1°43'W 585.5'.  
 County Surveyor Corner NW Sec. 18 to U. S. Brass Cap  
 S6°46'30"W 631.1'.  
 Aluminum Cap W 1/4 Sec. 18 to Brass Cap; S2°12'E 649.0'.  
 " SW " " S0°07'E 648.3'.



(2) S.7&amp;18, T.35S, R.2E.

S.7 &amp; 18, T35S, R3E, W. M.

 $\frac{1}{4}$  corner S.7 & 18. Set  $\frac{5}{8}$ "x30" rebar and Aluminum cap.

Probable original BT to NW.

Scribed  $\frac{1}{4}$ S 18 RS 461 BT. 8" D.Fir S7<sup>o</sup>E 24.6'"  $\frac{1}{4}$ S 7 " 10" W.Fir N64<sup>o</sup>W 19.2'.Section 7:

West Line;

0.0 feet SW corner. County Surveyor corner, BTs.

Bearing N0<sup>o</sup>53'30"E.2615.7 " W $\frac{1}{4}$  corner. Set  $\frac{5}{8}$ "x30" rebar, Alum. cap.Scribed  $\frac{1}{4}$ S.7 RS 461 BT. 12" D.Fir S5<sup>o</sup>E 23.4'."  $\frac{1}{4}$ S12 " 18" W.Fir N58<sup>o</sup>W 10.5'.

5231.3 feet NW corner. RS 461 Alum. cap. 2 original BTs,

Line Blazes, (not record).

North Line;

0.0 feet NW corner. Bearing S89<sup>o</sup>49'30"E.2900.6 " N $\frac{1}{4}$  corner. Brass cap, BTs.Bearing S89<sup>o</sup>47'E 2633.8'

5534.4 " NE corner. Brass cap, BTs.

East Line;

0.0 feet NE corner. Bearing S0<sup>o</sup>05'W.2632.8 " E $\frac{1}{4}$  corner. BRASS cap, BTs.Bearing S0<sup>o</sup>03'W 2627.6'.

5260.4 " SE corner. Brass Cap, BTs.

N-S center-line;

0.0 feet S $\frac{1}{4}$  corner.Bearing N0<sup>o</sup>21'30"E2617.5 " C $\frac{1}{4}$  corner. Set  $\frac{5}{8}$ "x30" rebar, Aluminum cap.Scribed C $\frac{1}{4}$  s7 RS 461 BT. 12" W.Fir S74<sup>o</sup>W 48.4'(Found 60" x 23' call Fir.) 11" S.Pine N18<sup>o</sup>E 44.2'.5223.1 " N $\frac{1}{4}$  corner.

E-W center-line;

0.0 feet W $\frac{1}{4}$  corner. Aluminum cap.Bearing N89<sup>o</sup>37'30"W.2922.7 " C $\frac{1}{4}$  corner.5571.5 " E $\frac{1}{4}$  corner.SECTION 18:

West Line;

0.0 feet NW corner. County Surveyor corner, North side County Rd.

Bearing S1<sup>o</sup>35'W.2646.5 " W $\frac{1}{4}$  corner. Set  $\frac{5}{8}$ "x30" rebar, Alum. cap.Scribed  $\frac{1}{4}$ S18 RS 461 BT 16" Y.Pine S54<sup>o</sup>E 34.7'."  $\frac{1}{4}$ S13 RS 461 BT 11" D.Fir N66<sup>o</sup>W 107.7'.

Jackson County Surveyor  
Jackson County Courthouse  
Medford, Oregon

SUBJECT: Sections 7 and 18, T.35S,R.3E, Willamette Meridian.

OBJECT: For Medford Corporation. To remonument existent of obliterated corners and subdivide Section 7.

NARRATIVE: Several corners needed for survey were not evident in field so reference was made to previous recorded survey done by Stuart Mc Kissick, RE 1093, and recorded Jackson County 1-26-23, Bk A pp 4-13 and recorded plat S-37.

Found; Sec. 7;

NW corner 2 BTs, stake, used by Mc Kissick, tied to by County Road Survey 1921, used for logging since 1920's, BTs do not fit records. See Survey #4178. Aluminum Cap & BTs.

SW corner County Surveyor Corner, under County Road, BTs, used by Mc Kissick with 2 BTs over 40 yrs at time of his survey.

NE corner BRass Cap & BTs.

E $\frac{1}{4}$  " " "

SE " " "

N $\frac{1}{4}$  " " "

Sec. 18;

E $\frac{1}{4}$  corner, post, stones, 2 BTs opened one up, fit records. Found faced trees at McKissick corners and line blazes out. Record Corners along West Range Line not used in 1923, (new Cadastral Caps) nor in 1970. See McKissick narrative.

Began Transit and chain traverse at SW corner S.7 to retrace McKissick survey and replace corners. Ran East to SE corner S.7, North to E $\frac{1}{4}$  corner, North to NE corner S.7, West to N $\frac{1}{4}$  corner, West to NW corner S. 7, South to point of beginning closing traverse. Ran South along West Line Sec.18 to approximate SW corner Sec. 18, East to SE corner Sec. 18, North to E $\frac{1}{4}$  corner Sec. 18, North to NE corner Sec. 18 and closed traverse against Section 7 traverse.

Comparing '70' survey with McKissicks found section line between 7&18 to be 1.7' longer and SE & E $\frac{1}{4}$  corners to be 16' north of '23' coordinates and found N $\frac{1}{2}$  of East line section 18 to have a discrepancy of 14.4'. Coordinates close on north and south boundaries and at E $\frac{1}{4}$  corner section 18.

Examining McKissick survey notes found he began at S $\frac{1}{4}$  section 7, running traverses in S.7 & 18 but failed to close between E $\frac{1}{4}$  & N $\frac{1}{4}$  corners S.7. His closure error at S $\frac{1}{4}$  S.7 was S 7.39' and E 2.96'. In his coordinate calculations on SE corner S.7 adjustment was taken as a (-) instead of as a (+) 7.39'. Applying adjustments in proper way coordinates of '23' SE & E $\frac{1}{4}$  corners fall in with '70' survey. All bearings and distances affected by '23' SW & E $\frac{1}{4}$  corners S. 7 to be recalculated. Corners to be reestablished by proportional measurements using McKissick survey.

Set  $\frac{1}{4}$  corner S.7/18 by '23' bearing and distance adjusted for difference at east corner of N 3.4' and E 1.7'. Bearing of east half line recalculated.

12/7	N89°35'W		N89°25'W	7/8
13/18	2949.0'	$\frac{1}{4}$ corner	2660.7'	18/17