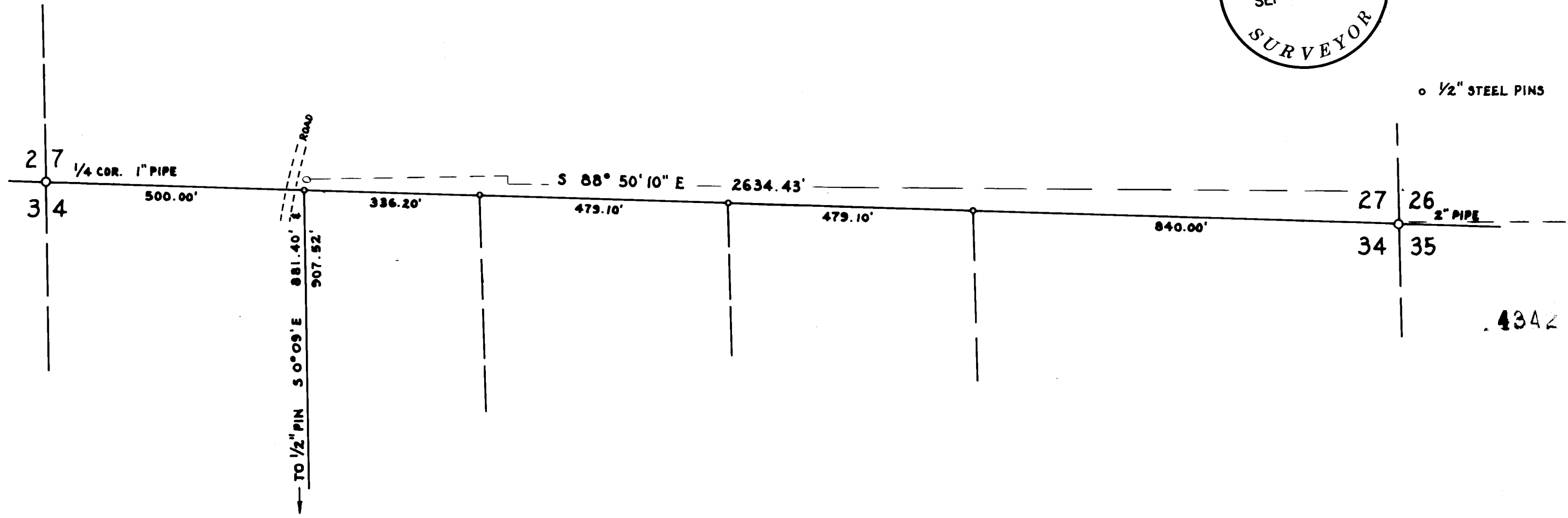
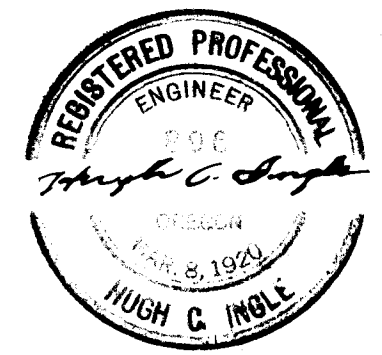
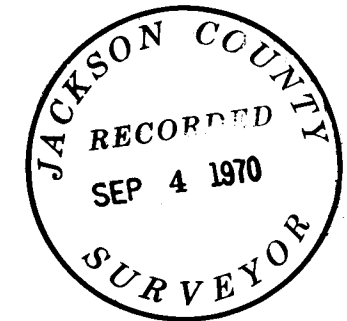


4342



SCALE 1" = 200'

SURVEY FOR
 REV. LESTER STEPHENS
 IN
 NE 1/4 SEC. 34 T. 38 S. R. 3 W.
 SCALE 1" = 200' HUGH C. INGLE
 JULY 30, 1970 CIVIL ENGINEER



4342

4342

Aug.,15,1970

Survey Narrative to Comply With O. R. S. 209-250

Survey For Rev. Lester Stephens
Route 1, Box 224, Highway 238,
Jacksonville, Oregon.

Survey By: Hugh C. Ingle C. E.

Basis of Bearings;- Polaris.

Procedure:-

Found Section corner pipe marker of record at Northeast corner of Section 34 and North Quarter corner of Section 34.
Ran random traverse from said quarter corner to said Section Corner and determined bearing and distance,
Set intermediate points on Section line as requested by client and also chaindd south on center line established by Dow Survey # 973.
Set bearing markers South from parcel corners on Section Line.

Hugh C. Ingle
Civil Engineer

