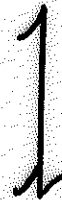
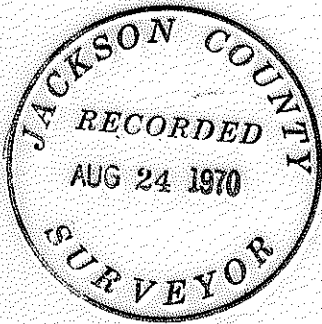


4322

4322

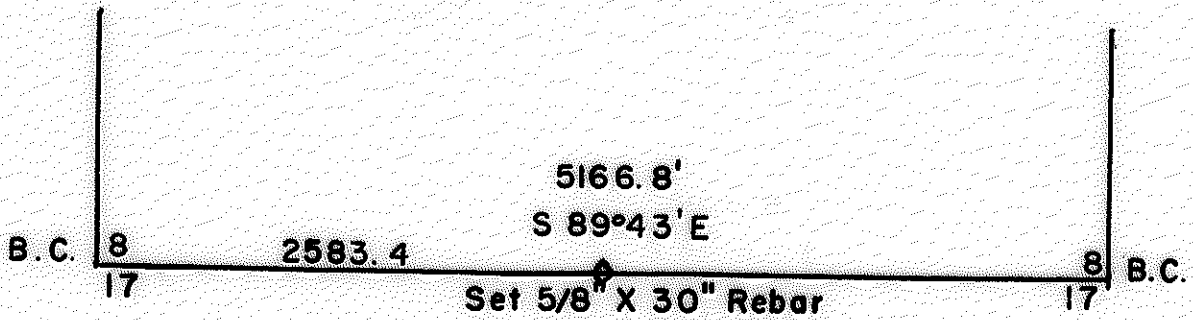
# SECTION PLAT

**Section 8      Township 33S      Range 2W W.M.**



August, 1970

Scale 1" = 1000'



4322

Butte Falls, Oregon  
August, 1970

4322

SECTION 8, T.33S, R.2W, Willamette Meridian.

NARRATIVE: To set  $\frac{1}{4}$  corner between Sections 8 and 17, T33S, R2W.  
For Medford Corporation.

Found SW and SE corners Sec. 8; Brass Caps, BTs.

Found one probable  $\frac{1}{4}$  BT uprooted and displaced by flood waters  
of East Fork of Evans Creek.

Began Transit and chain traverse (sun-shot by SW cor.) at  
Brass Cap SW corner Sec. 8, ran East up over ridge and down to approx-  
imate  $\frac{3}{4}$  corner by Evans Creek, then began at SE corner Sec. 8 (sun-  
shot by SE cor.) Brass Cap and ran West down to approximate  $\frac{3}{4}$  and  
Tied to previously set hub. Double chained entire line.

Set  $5/8$ " x 30" rebar and Aluminum Cap for  $\frac{1}{4}$  corner midway on  
line between south section corners. Corner falls on East bank of  
creek, scribed two new BTs both on West bank of creek.

Scribed 12" W. Fir N48°W 82.7 feet.  
 $\frac{1}{4}$ S8 RS 461 BT

Scribed 12" W. Fir S63°W 61.6 feet.  
 $\frac{1}{4}$  S17 RS 461 BT

Bearing South line Section 8.  
S89 43'E 5166.8 feet.  
 $\frac{3}{4}$  set at 2583.4 feet.

