

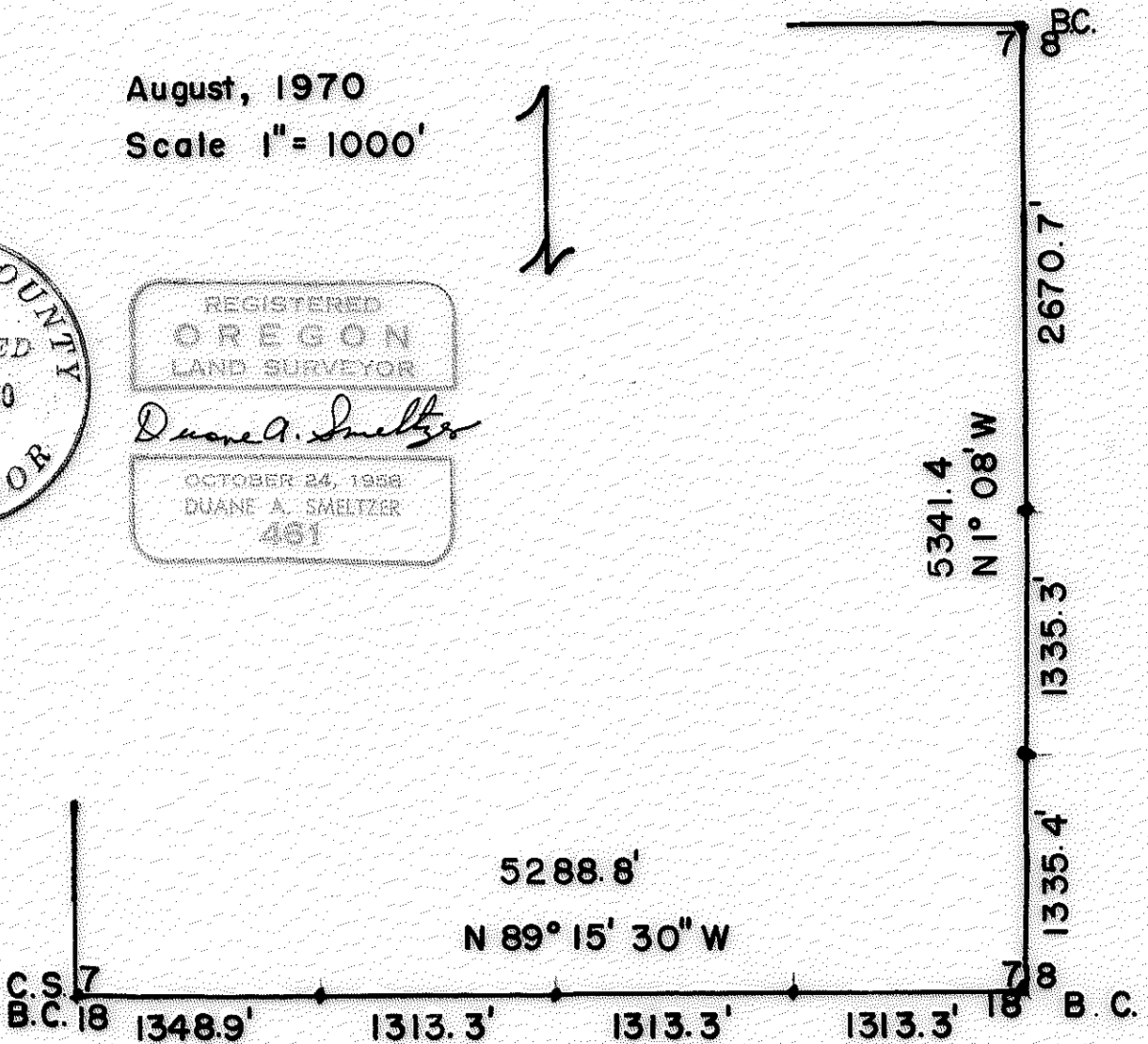
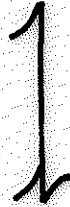
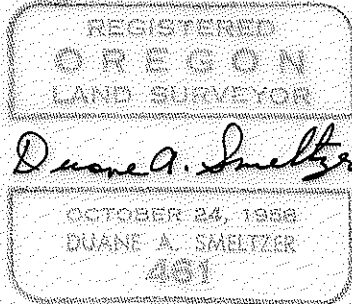
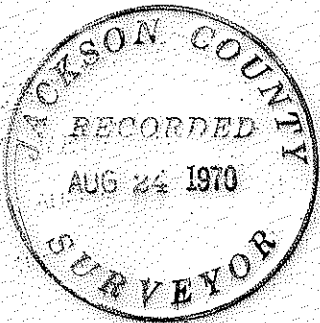
028V

4320

# SECTION PLAT

## Section 7 Township 34 S Range 2E W.M.

August, 1970  
Scale 1" = 1000'



4320

Butte Falls, Oregon  
August, 1970

SECTION 7, T.34S, R2E, W. M.

NARRATIVE: To set corners on South and East Section Lines, Section 7, T.34S, R2E, W.M. for Medford Corporation.

Found SW County Surveyor Brass Cap and BTs, SE and NE corner Brass Caps and BTs, Nothing found at S and E  $\frac{1}{4}$  corners.

Began Transit and chain survey at SE corner (Sun-shot by corner) S.7 Brass Cap, ran North along East section line to NE corner (Sun-shot by corner). Double chained. Began at SE corner and ran West along South line to SW corner County Surveyor Brass Cap. (Sun-shot by corner) double chained line.

EAST LINE: Bearing N1°08'W 5341.4 feet.

0.0 feet SE Brass cap.

1335.4 " S 1/16 between 7/18.

Set 5/8"x30" rebar, buried 3 inches

Scribed 19" P.Pine N31°W 133.0'. S 1/16S7 RS 461BT.

" 13" Cedar S7°E 168.7' S 1/16S8 RS 461BT.

2670.7 feet  $\frac{1}{4}$  corner between 7/8.

Set 5/8"x30" rebar and Aluminum Cap.

Scribed 7" D. Fir N83°W 24.3'.  $\frac{1}{4}$ S7 RS 461 BT.

" 9" " S69°E 16.5'.  $\frac{1}{4}$ S8 "

5341.4 feet NE Brass cap.

SOUTH LINE: Bearing N89°15'30"W. 5288.8 feet.

0.0 feet SE Brass Cap.

1313.3 " (20.0 ch.) E 1/16 between 7/18.

Set 5/8"x30" rebar and Aluminum cap.

Scribed 12" D. Fir N31°W 12.7'. E 1/16S7 RS 461BT.

" 11" Cedar S70°W 29.5' E 1/16S18 RS 461BT.

2626.6 " (40.0 ch.)  $\frac{1}{4}$  corner between S7/18.

Set 5/8"x30" rebar and Aluminum cap.

Scribed 8" Madrone N21°E 7.5'.  $\frac{1}{4}$ S7 RS461 BT.

" 14" W. Fir S29°W 21.3'  $\frac{1}{4}$ S18 RS 461 BT.

3939.9 feet (60.0 ch.) W 1/16 between S7/18.

Set 5/8"x30" rebar and Aluminum Cap.

Scribed 14" W. Fir N57°E 21.8'. W 1/16 S7 RS 461 BT.

" 10" W. Fir S42°W 31.0' W 1/16S18 RS 461 BT.

5288.8 feet (80.54 ch.) SW County Surveyor Brass Cap.

