

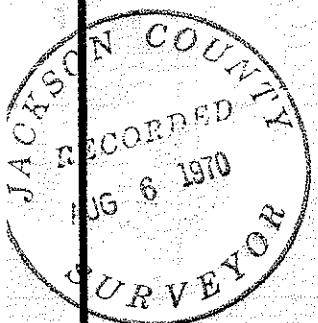
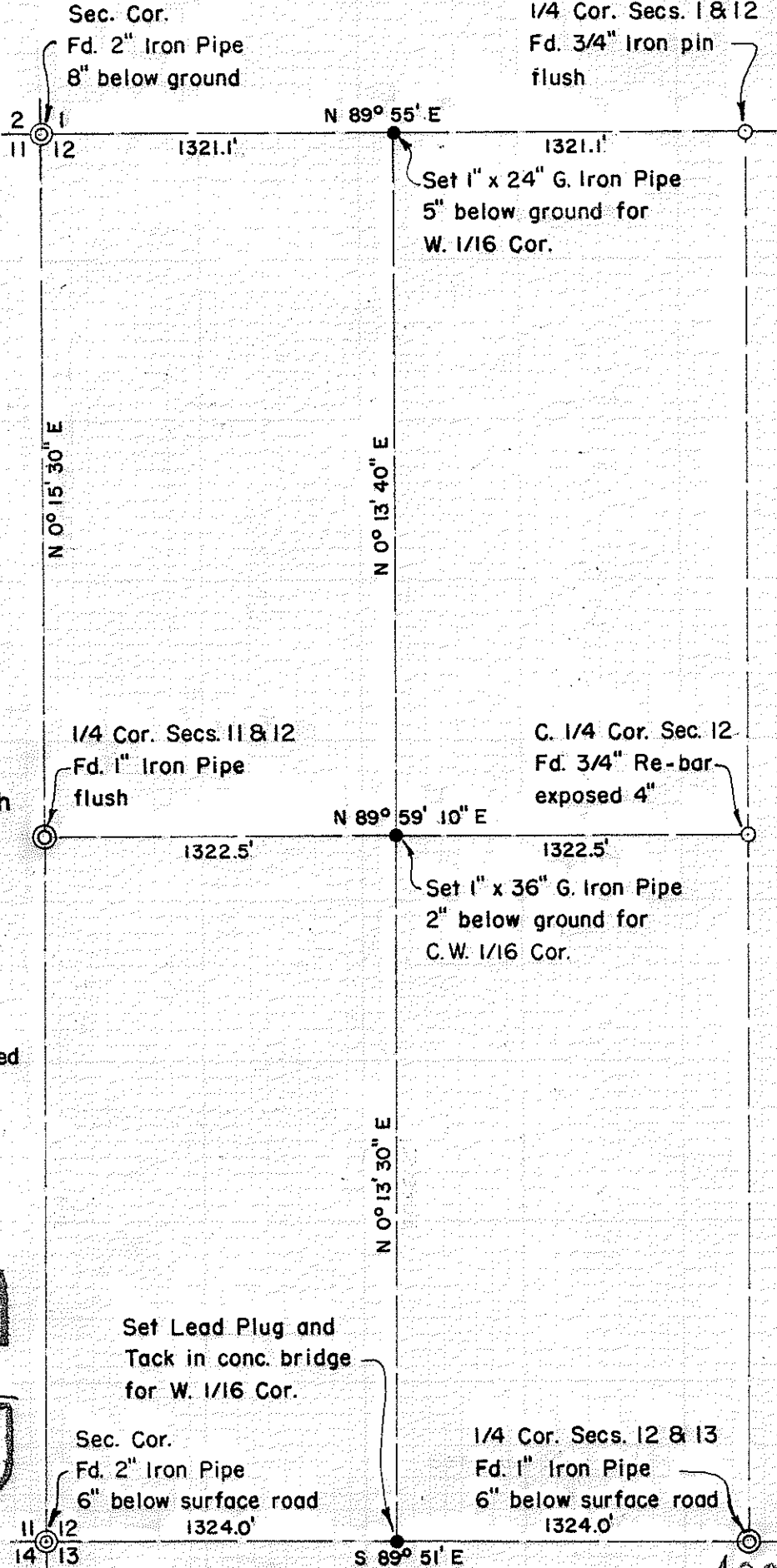
1087

Survey for:
Robert Callaghan

Located in the W. 1/2,
Sec. 12, T. 35 S., R. 2 W., W.M.

By: Mark E. Boyden

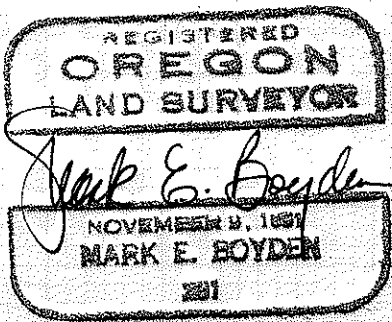
JULY 31, 1970



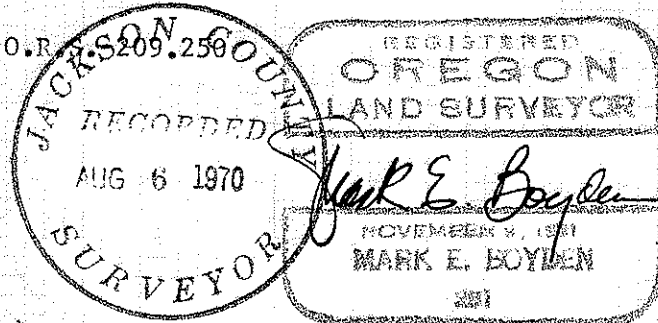
SCALE
1" = 600'

Basis of Bearings:
Recorded Survey No. 2881 with an azimuth decrease of 0° 01' 40" for convergency

- ⊙ Fd. Gov't. corner Re-established by County Surveyor.
- Fd. Gov't. corner established on Recorded Survey No. 3089
- Set mon. as indicated.



Survey Narrative to Comply with O.R.S. 209.250



FOR: Robert Callaghan
95 Mulberry Lane
Atherton, California 94025

PURPOSE: To monument and reference corners on the East boundary of the west-half of the west-half of Section 12, Township 35 South, Range 2 West, Willamette Meridian.

PROCEDURE:

Measured on a direct line between the corner common to Sections 1, 2, 11 & 12 and the quarter corner common to Sections 1 and 12 and at a midpoint, set a 1 inch X 24 inch galvanized iron pipe 5 inches below the ground surface for the West one-sixteenth section corner common to Sections 1 and 12 from which:

Set a 5/8 inch iron pin exposed 2 inches which bears South $12^{\circ} 17'$ East, 40.19 feet;

Set a 5/8 inch iron pin exposed 2 inches which bears North $49^{\circ} 15'$ East, 11.30 feet.

From the quarter corner common to Sections 11 and 12, traversed Easterly to the center quarter corner of Section 12, and at a computed mid-point, set a 1 inch X 36 inch galvanized iron pipe with top 2 inches below the ground surface for the center-west one-sixteenth section corner of Section 12, from which:

Scribed a 7 inch apple tree, "CW 1/16 S 12 281 BT" on one blaze, which bears South $72^{\circ} 48'$ West, 51.7 feet to the face of the blaze;

Set a 5/8 inch X 30 inch iron pin, exposed 2 inches which bears North $30^{\circ} 02'$ East, 12.08 feet;

Scribed an 11 inch pear tree "CW 1/16 S 12 281 BT" on one blaze which bears South 51° East, 190.8 feet to the face of the blaze.

Measured on a direct line between the corner common to Sections 11, 12, 13 & 14 and the quarter corner common to Sections 12 and 13 and at a midpoint, set a lead plug with tack in the concrete bridge deck for the West one-sixteenth section corner common to Sections 12 and 13, from which:

Center-punched a bronze disk Jackson County Bench Mark located near the Northwest corner of the bridge which bears Northwesterly 15.86 feet;

Set a lead plug with tack in concrete near the Southwest corner of the bridge which bears Southwesterly 16.24 feet.

July 31, 1970