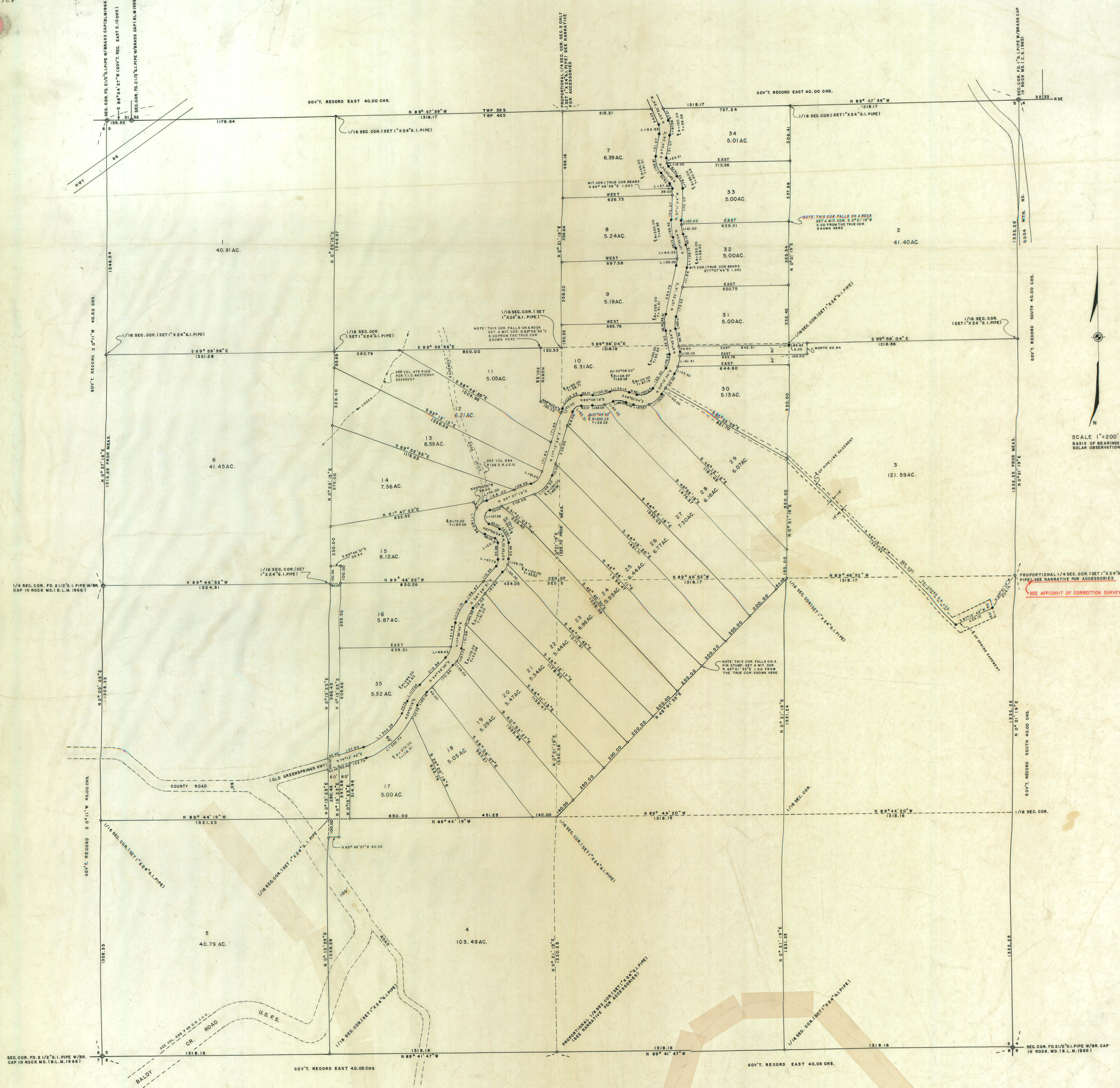


426



SCALE 1"=200'
BASIS OF BEARINGS
SOLAR OBSERVATION

PROPORTIONAL 1/4 SEC. COR. (SET 1" X 24" G.I. PIPE)
SEE NARRATIVE FOR ACCESSORIES
SEE AFFIDAVIT OF CORRECTION SURVEY NO. 11391

- LEGEND
- FD. REESTABLISHED GOV'T. COR.
 - SET 5/8" X 24" PIN FLUSH
 - SET 1/2" X 24" G.I. PIPE FLUSH (UNLESS OTHERWISE NOTED)

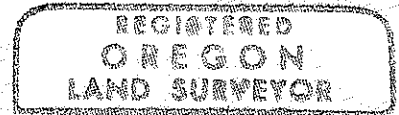
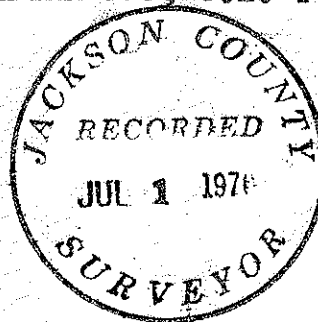
REGISTERED
OREGON
LAND SURVEYOR
George R. Burrell
JULY 10, 1964
GEORGE R. BURRELL
638

JACKSON COUNTY
RECORDED
JUL 1 1970
SURVEYOR

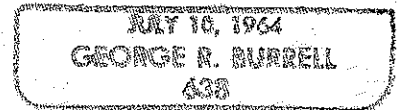
MAP OF SURVEY
FOR
SCHOOL HOUSE RANCH, INC. ASHLAND, OREGON
OF TRACTS
SITUATE IN SECTION 5, TWP. 40 S, R3E WM. JACKSON CO., ORE.
BY
GEORGE BURRELL LAND SURVEYOR MEDFORD, OREGON
JUNE 23, 1970

426

SURVEY NARRATIVE TO COMPLY WITH O.R.S. 209.250
REVISED BY CHAPTER 555, O.L. 1963



George Burrell



For: Schoolhouse Ranch, INC.
P.O. Box 83, Ashland, Ore.

Purpose:

To Subdivide Section 5, Twp. 40 South, Range 3 East, and Partition the Quarter/ Quarter Sections according to clients request.

Procedure:

The exterior of Section 5 was not traversed directly by Transit and Tape. A Control system utilizing a Model 101 Tellurometer and a Wild T-2 Theodolite was established as follows: From a point near the N.W. Cor. of Section 5 and a point near the N.E. Cor. of the NW1/4 of the NE1/4 of Section 5, positions of all Exterior Section corners, both found and reestablished by this Survey were measured radially. Also all interior 1/16 Section Corners set by this Survey were set from positions radiated from one of the above described points to a point near each 1/16 Section corner. Closed Traverse loops were run connecting the Interior 1/16 Sec. cor. control points described above. Analysis of the error of closure of these loops indicate that all corners set from these positions would be within a radius of 0.10 foot of that stated. The true Meridian was determined from the mean of three Solar Observations taken with a WILD T-2 Theodolite equipped with a Roelofs Solar Prism. The center line of the County Road was determined from the existing mean roadway center, from which centerline P.I. Monuments (R./R. spikes punched and set from 4" to 6" deep) were set for all the curves shown on the accompanying map. The 1/4 Section Corners reestablished by this survey were witnessed as follows:

At the North 1/4 Corner of Section 5 I set a 1"x24" G.I. pipe 6" deep at the South end of a large Boulder, from which I scribed two new bearing trees as follows:

A 13" Fir (scribed 1/4 S BT) bears North 12° 55' East 23.98 feet to the face of the lower blaze. A 9" Black Oak (scribed 1/4 S BT) bears South 83° 45' East 24.51 feet to the face of the lower blaze. No evidence remaining of original bearing trees.

At the East 1/4 corner of Section 5 I set a 1"x24" G.I. pipe flush and built a stone mound, from which I scribed two new bearing trees as follows:

(1) BEARS NORTH 31° 07' EAST 14.00 FEET

A 18" white Oak (scribed 1/4 S BT) ~~bears North 70° 54' East 8.08 feet to the face of the lower blaze.~~ A 6" Fir (scribed 1/4 S BT) bears North 76° 21' West 6.15 feet to the face of the lower blaze. No evidence remaining of original corner.

NORTH 27° 33' WEST 12.9 FEET *****

At the South 1/4 Corner of Section 5 I set a 1"x24" G.I. pipe flush and built a stone mound, from which I scribed 2 new bearing trees as follows:

A 12" Black Oak (scribed 1/4 S BT) bears South 63° 29' East 91.50 feet to the face of the lower blaze. A 16" White Oak bears South 12° 22' West 78.23 feet to the face of the upper blaze (scribed 1/4 S BT). No evidence remaining of original bearing trees.

A search was also made for original corner evidence at the South 1/4 corner of Section 32, Twp. 39 S, R 3 E, with negative results.