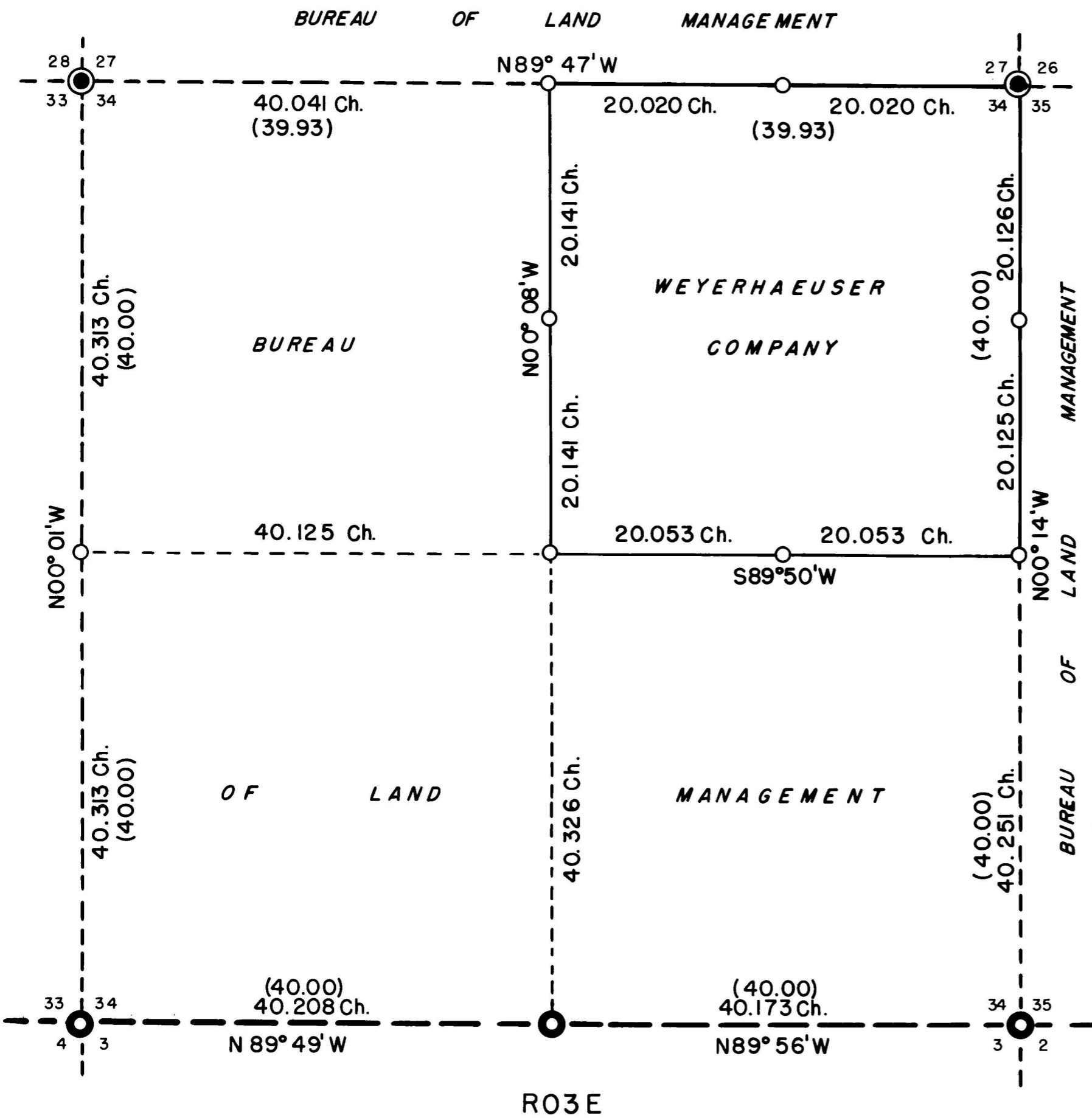


Survey started in August, 1969, and completed in December, 1969. Surveyed by G.R. CLARK under the direct supervision of C.H. HAMMERSLEY.



I, Creal H. Hammersley, certify that I have surveyed and monumented the land delineated on this plat and that this plat is a true representation of said survey.

REGISTERED
OREGON
LAND SURVEYOR
Creal H. Hammersley
JULY 9, 1965
CREAL H. HAMMERSLEY
686

BEARINGS BASED ON
SOLAR TRANSIT
OBSERVATIONS



- Lines — Blazed
- - - Lines — Other
- Found, Brass Cap SET BY B.L.M.
- Found, Brass Cap SET BY C.S.
- Set, Surv KAP

Retrace & Subdivision
Sec. 34, T38S, R03E W.M.
Jackson County, Oregon

 **Weyerhaeuser Company**
Klamath Falls Branch

SCALE — 1" = 10 Chains DATE — Jan. 7, 1970
DEL. — *ARC* CHECKED BY — *C.L.C.*
TRACED — *ARC* DRAWING No — LS 70-1

(Distances from G.L.O. notes)

I continued on the same line to 40.106 chains and the 1/4 corner common to Sections 34 and 35 and described on Page 2.

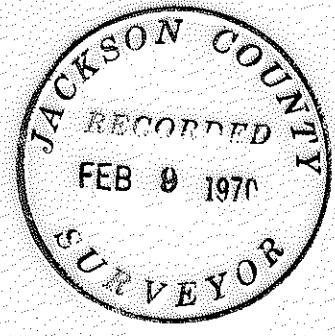
The error of closure was found to be satisfactory.

Having finished the transit and chaining work the lines around the Weyerhaeuser ownership, the NE1/4 Sec. 34, were then blazed.

Gary A. Clark
Party Chief

Approved:

Cecil H. Hamersley
Woods Engineering Supervisor



and which is referenced by:

a 24" white fir, N89°E, 6.5 Lks.

a 9" white fir, N68°W, 17.1 Lks.

All bearing and distances are to 'W' nails set at the base of the described trees.

True line around the NE1/4 Sec. 34

I began at the 1/4 corner common to Sections 27 and 34 as described on Page 2 and ran S00°08'E on a true line 20.141 chains and established the NE1/16 corner of Section 34, monumented the corner with a SurvKAP set on a 5/8" x 30" I.R. in a stone mound and which is stamped:

Weyerhaeuser
C
N1/16 | S34
C
1969
ORLS 686

and which is reference by:

an 8" white fir, N84°E, 8.4 Lks.

a 6" white fir, N40°W, 23.8 Lks.

All bearing and distances are to 'W' nails set at the base of the described trees.

I then continued on the same true line to 40.282 chains and to the C1/4 corner of Section 34 which I monumented with a SurvKAP set on a 5/8" x 30" I.R. in a stone mound and which is stamped:

Weyerhaeuser
C 1/4
S34
1969
ORLS 686

and from which bears

an 8" ponderosa pine, N77°E, 33.0 Lks.

a 9" ponderosa pine, N10°W, 29.3 Lks.

All bearings and distances are to 'W' nails set at the base of the described trees.

I then ran N89°50'E on a true line 20.053 chains to the E1/16 of Section 34 which I monumented with a SurvKAP set on a 5/8" x 30" I.R. in a stone mound, which is stamped:

Weyerhaeuser
E 1/16
C ——— C
S34
1969
ORLS 686

and which is referenced by:

an 8" ponderosa pine, N70°E, 16.6 Lks.

the bearing and distance being to a 'W' nail set at the base of the described tree.

and was found to be referenced by:

- a white fir S58°E, 11.9 Lks. (Original)
- a fir, dead, S33°E, 31.0 Lks. (Original)
- a white fir, N78°W, 34.2 Lks

all trees have been scribed and bear B. T. tags. I further perpetuated the corner by establishing the following:

- a 12" white fir, N65°E, 33.6 Lks
- a 9" white fir, S26°E, 10.4 Lks.
- a 9" white fir, N58°W, 14.0 Lks.

All bearings and distances of the newly established trees are to 'W' nails set of the base of the described trees.

East between Sections 34-T38S & 3-T39S-R3E

I then began traversing Easterly from the corner common to Sections 33 and 34-T38S and Sections 3 and 4-T39S both of R3E to the 1/4 corner common to Section 34-T38S-R3E and Section 3-T39S-R3E which was found to be monumented by a brass cap on which was stamped:

T38 & 39S-R3E

1/4 $\frac{34}{3}$ Cor.

C.S.
1967

and from which bears:

- a 16" white fir, N15°E, 16.7 Lks.
- a 24" white fir, N72°W, 46.4 Lks.
- a D. & D. white fir, N39°W, 46.0 Lks. (Original).

The two living white firs have been scribed C. S. and bear B. T. tags.

I then continued traversing Easterly to the section corner common to Sections 34 and 35-T38S-R3E and Sections 2 and 3-T39S-R3E and as described on Page 2.

I found the error of closure to be satisfactory.

I then set the 1/4 cor. common to Sections 33 and 34 at the mid point and on the line common to the afore-mentioned sections, only after not having been able to find any indication of its original location. The corner is now monumented by a SurvKAP, set on a 5/8" x 30" I.R. in a stone mound on which is stamped:

Weyerhaeuser

1/4

33 | 34

1969

ORLS 686

I then ran $N00^{\circ}14'W$ on a true line 40.251 chains and set the $1/4$ corner between Sections 34 and 35 after further searching indicated the corner was lost. The corner was then monumented by SurvKAP set on a $5/8'' \times 30''$ I.R. in a stone mound and is stamped:

Weyerhaeuser
1/4
34 | 35
1969
ORLS 686

and which is referenced by:

an 8" white fir, $N72^{\circ}E$, 43.6 Lks.

a 9" white fir, $S12^{\circ}W$, 30.0 Lks.

all bearing and distances to 'W' nails.

I then continued on the true line to 60.376 chains and set the $N1/16$ corner between Sections 34 and 35 which is monumented by a SurvKAP set on a $5/8'' \times 30''$ I.R. in a stone mound and which is stamped:

Weyerhaeuser
N1/16
34 | 35
1969
ORLS 686

and is referenced by:

a 16" white fir, $N88^{\circ}E$, 38.7 Lks.

a 5" red cedar, $N77^{\circ}W$, 11.7 Lks.

Bearings and distances are to 'W' nails set at the base of described trees.

I then continued on the true line to 80.502 chains and the section corner common to Sections 26, 27, 34, and 35 as described as described on Page 1.

West through the middle of Section 34

I then ran West from the $1/4$ corner between Sections 34 and 35 on a random line 79.250 chains but was unable to find any physical evidence of the $1/4$ corner between Sections 33 and 34.

South between Sections 33 and 34

I then began to traverse southerly from the section corner common to Sections 27, 28, 33, and 34 as described on Page 1, through the point 79.250 chains West and to the corner common to Sections 33 and 34-T38S-R3E and Sections 3 and 4-T39S-R3E which was found to be monumented by a brass cap which was stamped:

T38 & 39S-R3E
33 | 34
4 | 3
Sec. Cor.
C.S. 1961

I then ran S89°47'E on a true line and being satisfied that the 1/4 corner of Sections 27 and 34 is lost I set a SurvKAP on which is stamped:

Weyerhaeuser
1/4 27
 34

1969
ORLS 686

and which is on a 5/8" x 30" I.R. in a mound of stone of 40.041 chains East, from which bears:

- a 10" white fir, N17°E, 14.4 Lks.
- a 6" white fir, S41°E, 6.0 Lks.

Bearings and distances are to 'W' nails at the base of the described trees. I then continued to 60.061, being the E1/16 between Sections 27 and 34 and set a SurvKAP on which is stamped:

Weyerhaeuser
E1/16 27
 34

1969
ORLS 686

and which is on a 5/8" x 30" I.R. in a mound of stone from which bears:

- an 18" white fir, S29°E, 36.2 Lks.
- a 12" white fir, N55°W, 9.7 Lks.

Bearings and distances are to 'W' nails set at the base of the described trees. I then continued to 80.081 being the corner common to Sections 26, 27, 34, and 35 as described on Page 1.

South Between Sections 34 and 35

I ran South on a random line from the brass cap common to Sections 26, 27, 34, and 35 as described on Page 1, a distance of 40 chains, after being unable to locate the 1/4 corner common to Sections 34 and 35, I continued South to 80.501 chains which is 0.327 chains West of the corner common to Sections 34 and 35-T38S-R3E and Sections 2 & 3-T39S-R3E, and which was found to be monumented by a brass cap which is stamped:

T38 & 39S-R3E
3 | 2
Sec. 34 | 35 Cor.

C.S.
1967

and which was found to be referenced by

- a white fir N27°E, 45.0 Lks. (B.T.)
- a white fir S04°E, 14.0 Lks. (B.T.)
- a white fir S41°W, 23.0 Lks. (B.T.)
- a 26" white fir N20°W, 73.4 Lks. (Scribed C.S. B.T.)

and all trees bearing 'W' nails and metal B.T. tags.

1193

WEYERHAEUSER COMPANY
KLAMATH FALLS AREA

Subdivision & Retrace
Section 34-T38S-R03E, W.M.
Jackson County, Oregon

This survey was made by G. R. Clark, W. J. Butcher, and J. E. Barrett plus two axemen. The survey was started on August 4, 1969, and completed on December 22, 1969, under the direct supervision of C. H. Hammersley.

All lines were run with a 01' Gurley Solar Transit. Chaining was done with a 2-chain topographic steel tape.

West between Sections 27 and 34

Starting at the section corner common to Sections 26, 27, 34, and 35-T38S-R3E, W.M. which is monumented by a brass cap which is stamped

U. S. Cadastral Survey

T38S-R3E

S27	S26
S34	S35

1958
B.L.M.

and which was found to be witnessed by:

- a 15" white fir, N65°E, 93.7 Lks.
- an 8" white fir, S27°E, 28.5 Lks.
- a 27" white fir, S53°W, 109.0 Lks.
- a 30" white fir, N05°W, 65.5 Lks.

all trees had been scribed and bear B. L. M. corner reference tags.

I ran N88°10'W on a random between Sections 27 and 34, a distance of 40 chains, and after not finding any physical evidence of the 1/4 corner, I continued on the same bearing to 80.050 chains West which is 2.268 chains North of the section corner common to Sections 27, 28, 33, and 34 which was found to be monumented by a 2" brass cap and which is stamped:

U. S. Cadastral Survey

T38S-R3E

S28	S27
S33	S34

1958
B.L.M.

and which was found to be witnessed by

- a white fir N36°E, 119.0 Lks.
- a white fir S68°E, 35.0 Lks.
- a white fir S56°E, 50.0 Lks. (original)
- a white fir, S60°W, 153.0 Lks.
- a white fir, N52°W, 97.0 Lks.

all trees had been scribed and bear B.L.M. corner reference tags.