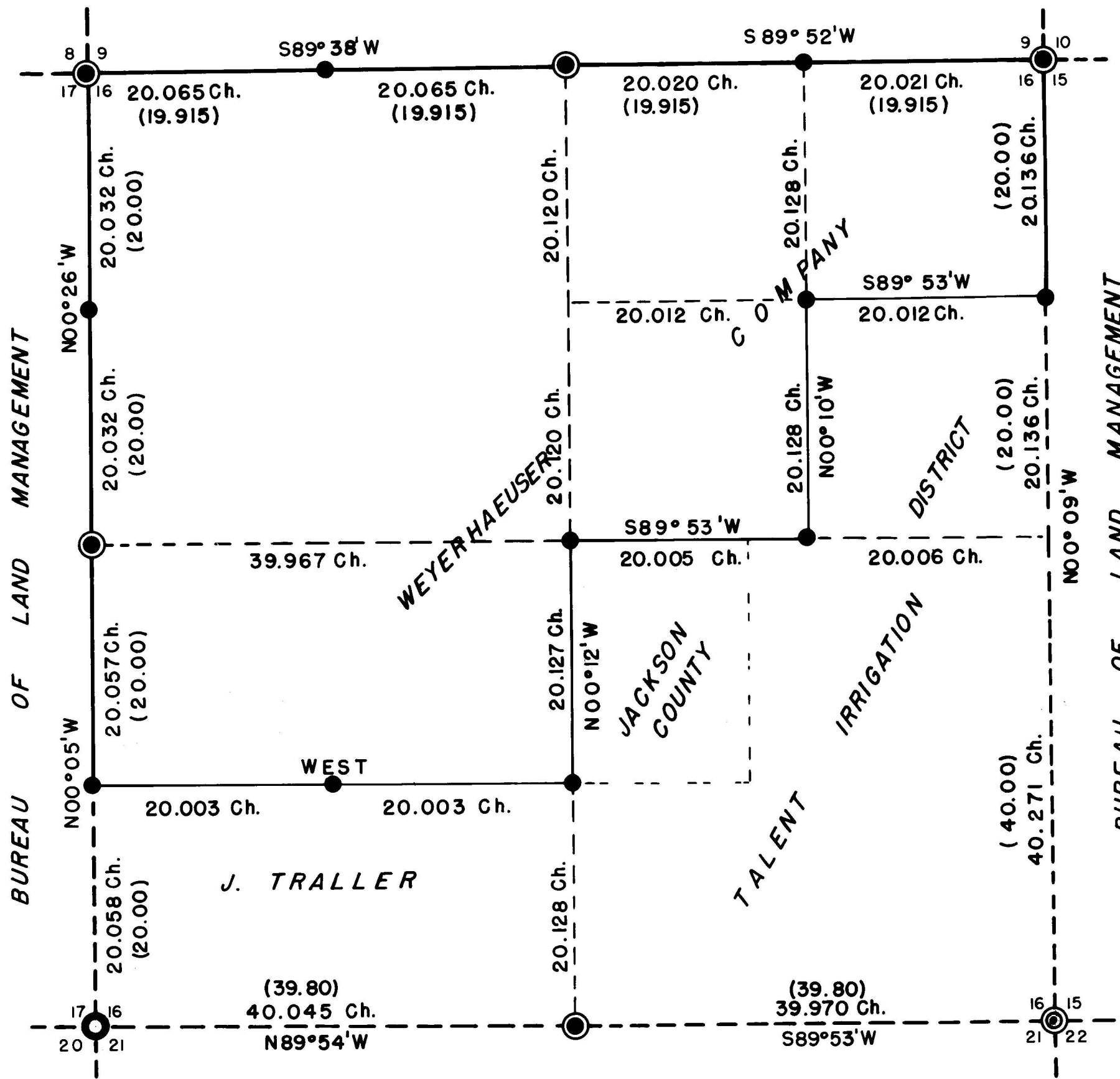


Survey started in August, 1969, and completed in December, 1969, by G.R. Clark under the direct supervision of G.H. Hammersley

BUREAU OF LAND MANAGEMENT

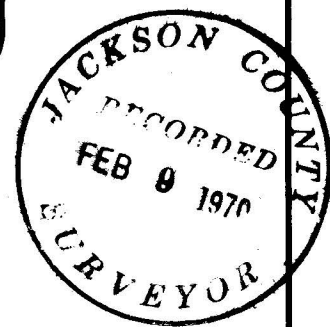


I, Creal H. Hammersley, certify that I have surveyed and monumented the land delineated on this plat and that this plat is a true representation of said survey.

REGISTERED OREGON LAND SURVEYOR

Creal H. Hammersley

JULY 9, 1965
CREAL H. HAMMERSLEY
686



BEARINGS BASED ON SOLAR TRANSIT OBSERVATIONS

- Lines, Blazed
- - - Lines, Other
- Found, Brass Cap
- ⊙ Found, Corner, Set 'W' nail in pavement
- ⊙ Found, Corner, Set SurvKAP
- Set, SurvKAP

Retrace & Subdivision
Sec. 16, T39S, R03E W.M.
Jackson County, Oregon

 **Weyerhaeuser Company**
Klamath Falls Branch

SCALE — 1" = 10 Chains DATE — Jan. 12, 1970
DEL. — *R.C.* CHECKED BY — *G.L.C.*
TRACED — *R.C.* DRAWING No — LS 70-2

T 3 9 S , R 0 3 E
(Distances from G.L.O. notes.)

I found the error of closure to be satisfactory.

I then went West on a true line from the S C 1/16, a distance of 20.003 chains and to the SW 1/16, which I monumented with a SurvKAP, on a 5/8" x 30" I. R. in a stone mound, and which is stamped:

Weyerhaeuser
SW 1/16
S 16
1969
ORLS 686

There were no suitable trees for reference, so I continued on the true line 40.006 chains and to the S 1/16 common to Sections 16 and 17 as described on page 4.

I found the error of closure to be satisfactory.

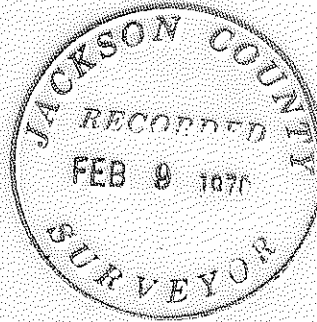
Having completed the transit and chaining work, I then blazed the lines around the Weyerhaeuser Company ownership.

Harry G. Clark

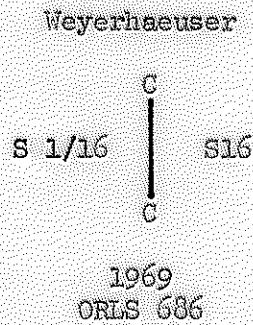
Party Chief

Approved:

Crest H. Hamantilly
Woods Engineering Supervisor



Continuing on the true line to 60.367 chains and the S C 1/16 corner at which I set a SurvKAP on a 5/8" x 30" I. R. in a stone mound and which is stamped:



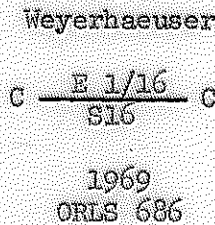
from which bears:

- a 6" Oak, S64°E, 12.9 lks.
- an 8" White fir, S12°W, 25.1 lks.

The bearings and distances are to 'W' nails.

Continuing on the true line 80.495 chains and to the 1/4 corner common to Sections 16 and 21.

I then ran N89°53'E from the C 1/4 of Section 16 on a true line 20.005 chains to the E C 1/16 corner at which I set a SurvKAP on a 5/8" x 30" I. R. in a stone mound on which is stamped:

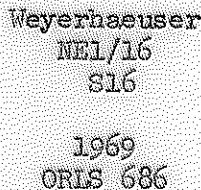


and from which bears:

- a 12" White fir, S77°E, 24.5 lks.
- an 8" White fir, N54°W, 14.4 lks.

The bearing and distances are to 'W' nails.

I then went N00°10'W on a true line 20.128 chains to the NE 1/16 corner which I monumented with a SurvKAP set on a 5/8" x 30" I. R. in a stone mound on which is stamped:



and from which bears:

- a 12" White fir, S88°E, 45.1 lks.
- a 10" White fir, S28°W, 23.4 lks.

The bearings and distances being to 'W' nails.

I then went S89°53'W on a true line 20.012 chains to the N 1/16 common to Sections 15 and 16 and as described on page 1.

a 14" White fir, S84°W, 18.6 Lks.

a 9" White fir, N01°W, 46.5 Lks.

The bearing and distances are to 'W' nails.

Then continuing on the true line to 40.115 chains and to the 1/4 corner common to Sections 16 and 17.

East between Sections 16 and 21

From the section corner common to Sections 16, 17, 20, and 21 I began traversing Easterly to the 1/4 corner common to Sections 16 and 21 which was found to be monumented by a 1" I. P. in a stone mound and from which bears:

a Ponderosa Pine (stump), N37°E, 29.0 Lks. (B.T.)

a White fir, N54°E, 101.0 Lks.

an 18" Douglas fir, S22°E, 29.0 Lks.

I set a SurvKAP on a 5/8" x 30" I. R. in the center of the existing 1" I. P., on which is stamped

Weyerhaeuser
1/4
16
21
1969
ORLS 686

I then continued traversing Easterly to the section corner common to Sections 15, 16, 21, and 22.

Finding the error of closure to be satisfactory I begin the subdivision of the described section.

Subdivision

From the 1/4 corner common to Sections 9 and 16 I ran S00°12'E on a true line 40.240 chains to the C 1/4 of Section 16 at which I set a SurvKAP, on a 5/8" x 30" I. R. in a stone mound, and which is stamped:

Weyerhaeuser
C 1/4
S16
1969
ORLS 686

and from which bears:

an 8" White fir, N30°E, 23.9 Lks.

a 5" White fir, S70°E, 8.7 Lks.

The bearings and distances are to 'W' nails.

Then running $N00^{\circ}26'W$, on a true line, 20.032 chains to the $N \frac{1}{16}$ between Sections 16 and 17 which I set a SurvKAP, on a $5/8'' \times 30''$ I. R. in a stone mound, and on which is stamped:

Weyerhaeuser
N $\frac{1}{16}$
17 | 16
1969
ORLS 686

and from which bears:

a 6" White fir, $S51^{\circ}E$, 34.4 Lks.

an 8" White fir, $S64^{\circ}W$, 29.7 Lks.

The bearing and distances are to 'W' nails.

Continuing on the true line to 40.064 chains and to the section corner common to Sections 8, 9, 16, and 17.

Then from the $\frac{1}{4}$ corner common to Sections 16 and 17 I ran $S00^{\circ}02'W$ on a random line 40.115 chains to a point which is 0.086 chains East of the section corner common to Sections 16, 17, 20 and 21 which was found to be monumented by a brass cap and which is stamped:

U. S. Cadastral Survey
T39S R3E
17 | 16
20 | 21
1967
B.L.M.

and from which bears

a Ponderosa Pine, $N39^{\circ}E$, 38.3 Lks (scribed C.S.)

a 10" Ponderosa Pine, $S83^{\circ}E$, 104.6 Lks.

a Ponderosa Pine, $S60^{\circ}W$, 30.2 Lks.

a White Fir, $N17^{\circ}W$, 95.7 Lks.

all trees have been scribed and have B.L.M. B. T. tags.

I then ran $N00^{\circ}05'W$ on a true line 20.058 chains to the $S \frac{1}{16}$ corner common to Sections 16 and 17 and set a SurvKAP, on a $5/8'' \times 30''$ I. R. in a stone mound, on which is stamped:

Weyerhaeuser
S $\frac{1}{16}$
17 | 16
1969
ORLS 686

and from which bears:

I further perpetuated the corner by setting a SurvKAP, on a 5/8" x 30" I. R. which is stamped:

Weyerhaeuser
T39S R3E

8	9
17	16

1969
ORLS 686

and increasing the size of the mound of stone. I did not set any additional references as none of the surrounding trees seemed suitable, and the corner is approximately 2 chains South of the road and in a barren clearing.

I then ran N89°38'E on a true line 20.065 chains to the W 1/16 between Sections 9 and 16 at which I set a Survkap on a 5/8" x 30" I. R. in a stone mound on which is stamped:

Weyerhaeuser

W 1/16	9/16
--------	------

1969
ORLS 686

and which is referenced by

a 5" White fir, N25°E, 46.5 lks.

an 8" Red cedar, S66°E, 60.9 lks.

the bearing and distances being to 'W' nails.

Continuing on the true line to 40.130 to the 1/4 corner common to Sections 9 and 16.

South between Sections 16 and 17

From the section corner common to Sections 8, 9, 16, and 17 I ran S00°06'W on a random line 40.064 chains to a point 0.374 chains East of the 1/4 corner common to Sections 16 and 17, which was found to be monumented by a mound of stone and which is referenced by:

a Douglas fir, N10°W, 54.0 lks. (B.T.)

a White fir (dead) S79°E, 150.0 lks. (B.T.)

I set a SurvKAP, on a 5/8" x 30" I. R. on which is stamped:

Weyerhaeuser

17	1/4	16
----	-----	----

1969
ORLS 686

and increased the size of the stone mound, did not set any additional references.

and from which bears:

a 10" White fir, N02°E, 42.4 lks.

a 14" White fir, N72°W, 43.2 lks.

the bearing and distances are to 'W' nails.

I then continue on the true line to 80.542 chains and the corner common to Sections 15, 16, 21, and 22.

West between Sections 9 and 16

From the corner common to Sections 9, 10, 15, and 16 I ran West on a random line 40.041 chains to a point which is 0.093 chains North of the 1/4 corner common to Sections 9 and 16 and at which I set a SurvKAP on a 5/8" x 30" I. R. in a stone mound, which was stamped:

Weyerhaeuser
1/4 9
 16
1969
ORLS 686

from which only one B. T. is still in existence.

a White Fir, S02°E, 242.0 lks.

I further perpetuated the corner by:

an 18" White Fir, N07°W, 143.1 lks.

the bearing and distance being to a 'W' nail set at the base of the described reference tree.

I then ran N89°52'E on a true line 20.020 chains to the E 1/16 between Sections 9 and 16 at which I set a SurvKap, on a 5/8" x 30" I.R. in a stone mound, and which is stamped:

Weyerhaeuser
E 1/16 9
 16
1969
ORLS 686

and from which bears:

an 8" White fir, S46°E, 32.7 lks.

a 16" White fir, S63°W, 57.9 lks.

the bearings and distances being to 'W' nails.

Then continuing on the true line to 40.041 chains and to the section corner common to Sections 9, 10, 15, and 16.

I then ran S89°55'W on a random line from the 1/4 corner common to Sections 9 and 16, 40.151 chains to a point which is 0.201 chains North of the section corner common to Sections 8, 9, 16, and 17, and which I found to be monumented by a mound of stone and witnessed by:

a fir, S57°W, 268.0 lks. (B.T.)

WEYERHAEUSER COMPANY

KLAMATH FALLS AREA

Subdivision & Retrace
Sec. 16, T39S, R03E, W.M.
Jackson County, Oregon

This survey was made by G. R. Clark, W. J. Butcher, and J. E. Barrett, plus two axemen. This survey was started August 22, 1969, and completed December 23, 1969, under the direct supervision of C. H. Hammersley.

Retrace

North between Sections 15 and 16

Starting at the corner common to Sections 15, 16, 21, and 22 which I set a 'W' nail in the pavement from the recorded B-T-S.:

a 20" Lodge Pole Pine N08°E, 130° Lks.

a 20" White Fir, S88-1/2°E, 134.8 Lks.

both of which are scribed C. S. B. T.

From the above described corner I began running N00°13'W on a random line to a point 1.913 chains North. I then triangulated across Hyatt Reservoir to 51.712 chains North, then continuing on this random line to a point 80.542 chains North which is 7.3 Lks. East of the section corner common to sections 9, 10, 15, and 16 which I found to be monumented with a 2" I.P. in a stone mound, and which was referenced by:

a 32" White Fir, N08°W, 169.5 Lks. (B.T.)

I further perpetuated the corner by setting a SurvKAP on a 5/8" x 30" I. R., in the center of the existing pipe, which is stamped:

Weyerhaeuser
T39S R3E
9 | 10
16 | 15
1969
ORLS 686

and which I referenced by

a 12" Red Cedar, N54°E, 50.7 Lks.

the bearings and distances of both references are to 'W' nails.

I then ran S00°09'E on a true line 20.136 chains to the N1/16 between 15 and 16, and set a SurvKAP, on a 5/8" x 30" I.R. in a stone mound, on which was stamped

Weyerhaeuser
N 1/16
16 | 15
1969
ORLS 686