

BOISE CASCADE CORPORATION

P. O. BOX 100, MEDFORD, OREGON

SCALE 1 in. = 1000 ft.

DATE December 19, 1969

BASIS OF BEARING

SOLAR OBSERVATION

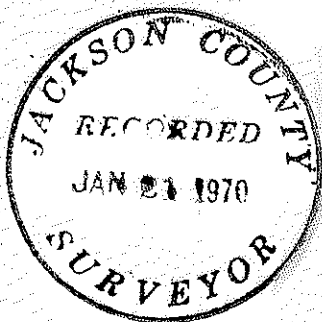
Two solar observations were taken near section corner 2 1/2 at 9:45 A.M. on July 22, 1968 with a one minute transit. The two agreed within one minute.

CORNERS

35 | 36

2 | 1 FOUND

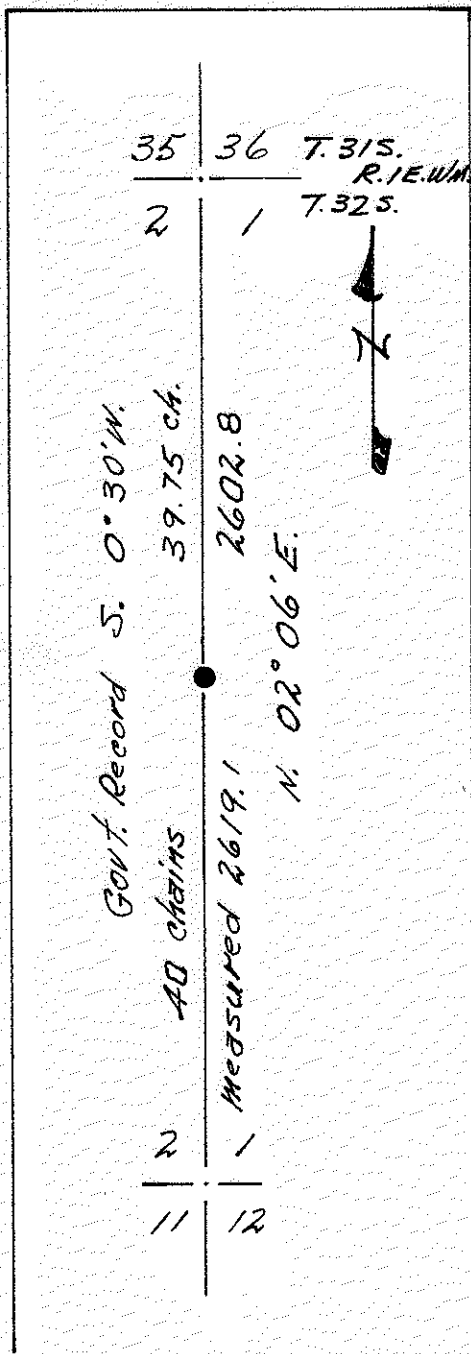
a brass cap set in 1936 by the cadastral surveyor; an 18" D. fir bears S. 21° E. 18.8 ft., a 12 in. D. fir bears N. 64 1/2° E. 19.2 ft., a 15 in. D. fir bears N. 27° W. 32.0 ft., a 16 in. D. fir bears S. 48° W. 25.1 ft. All faces on these trees are closed. Also a 19 in. oak bears N. 47 1/2° E. 48.8 ft.



2 | 1
11 | 12 FOUND

a brass cap set in 1961 by the County surveyor 2 in. above the ground. Original 10 in. fir stump N. 67° E. 230 ft. scribe visible, 7 in. D. fir S. 80 1/2° E. 41.0 ft. C/s B.T., 6 in. madrone S. 02° W. 18.8 ft. C/s B.T., 15 in. Chinquapin N. 34° E. 40.3 ft. C/s B.T., 22 in. D. fir N. 03° W. 81.0 ft. C/s B.T.

2 | 1 RE-ESTABLISHED BY SURVEY



REGISTERED OREGON LAND SURVEYOR

Brice L. Brandt

JULY 14, 1967 BRICE L. BRANDT 787

SURVEY NARRATIVE TO COMPLY WITH O.R.S. 290.250
REVISED BY CHAPTER 555, O.L. 1963

FOR: BOISE CASCADE CORPORATION
P. O. BOX 100, MEDFORD, OREGON

PURPOSE: To re-establish and monument the lost one-quarter corner common to Sections 1 and 2, Township 32 South, Range 1 East, Willamette Meridian and to define and mark the north half of the section line common to Sections 1 and 2.

PROCEDURE: Ran a random transit traverse from the section corner common to Sections 35 and 36, Township 31 South, Range 1 East and Sections 1 and 2, Township 32 South, Range 1 East south to the section corner common to Sections 1, 2, 11 and 12. No evidence of the original one-quarter section corner could be found. I therefore set a 1" x 36" galvanized iron pipe driven 24" in the ground at the proportionate distance between section corners and topped with a 1 1/2" to 1" galvanized bell reducer filled with pot metal and stamped as shown below in 1/8" letters and numerals.

T. 32S R. 1E
S2 S1
1/4
1969
RS787

NEW REFERENCES: I scribed an 18" Douglas fir, which bears N 25° W 8.9 feet, "1/4 S 2 RS787" in the upper blaze and "BT" in the lower blaze. Also a 11" Douglas fir scribed "1/4 S 1 RS787" in the upper blaze and "BT" in the lower blaze bears S 44° E 13.4 feet. The distances were measured to the face of the blazes and the compass declination was set at 18 1/2° E.

The field work was completed December 15, 1969 by B. L. Brandt, Sam Richardson and Jim Henney.

See attached map.

