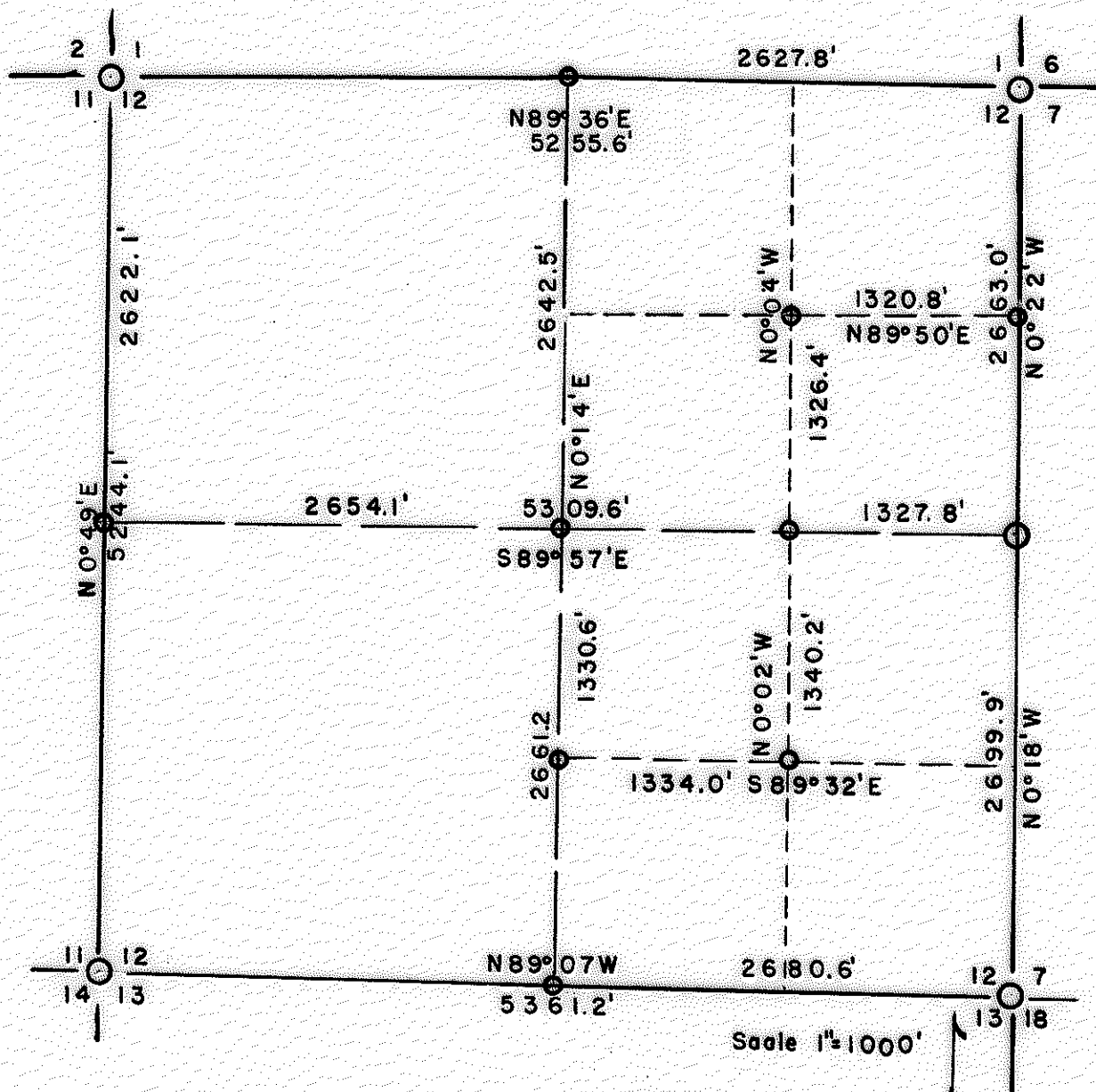


4177

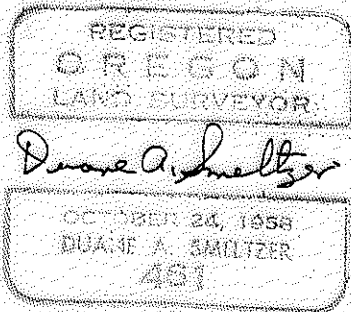
4177

SECTION PLAT

S.12, T.34S, R.3W, W.M.



Scale 1"=1000'



4177

Butte Falls, Oregon
December 19, 1969

County Surveyor
Jackson County Courthouse
Medford, Oregon

Dear Sir;
Please record following in Public Land Surveys.

Section 12, T. 34S, R3W, Willamette Meridian.

NARRATIVE; For Medford Corporation, to subdivide and partition.
Found following corner evidence.

- SE corner; Cadastral Cap & BTs.
- S 1/4 " original evidence gone.
- SW " NE BT Y. Pine
- SE " stump hole.
- SW " B. Oak open, scribes.
- NW " " " faces, dead, rotted.
- W 1/2 " Original evidence gone.
- NW " NE BT Y. Pine rotted stump, burned.
- SE " " down tree.
- SW " " stump hole.
- NW " B. Oak, open faces, rotted.
- N 1/2 " Original evidence gone. (reported Madrone not identifiable).
- NE " Cadastral Cap & BTs.
- E 1/4 " " " " "

Ran transit & chain closed traverse around exterior boundary.
Solar bearings.

Began at SE corner, ran West to SW corner, ran North to NW corner,
ran East to NE corner, ran South to point of beginning.

Set N, S, W, Center 1/4 corners. Ran N 1/2-S 1/4; ran CS 1/16-SE 1/16-CE 1/16-
NE 1/16-N 1/16 12/7.

SOUTH LINE; Bearing, S89°07'E.

0.0 feet SE corner. RS 461

2680.6 " S 1/4 " Set 5/8"x3' rebar & Aluminum Cap 1/4 S 12/13

Scribed RS 461 BT

8" Black Oak S70°W 7.6'

11" Black Oak N13°W 14.3'

5361.2 " SW corner Set 5/8"x3' rebar & Aluminum Cap. RS 461

11/12

14/13

WEST LINE; Bearing, N0°49'E

0.0 feet SW corner. RS 461

2622.0 " W 1/4 " Set 5/8"x3' rebar & Al. cap 1/4

7/12

Scribed RS 461 BT 1/4 S

8" D. Fir 11.5' N 39°E

9" " 14.5' N 40°W

5244.1 " NW corner Set 5/8"x3' rebar & Al. cap RS 461

2/1

11/12

10" Y. Pine N38°E 21.6' S1.

16" D. Fir S18°E 22.6' S12.

14" D. Fir S65°W 17.6' S11.

11" B. Oak N57°W 17.8' S2.

T34S R3W