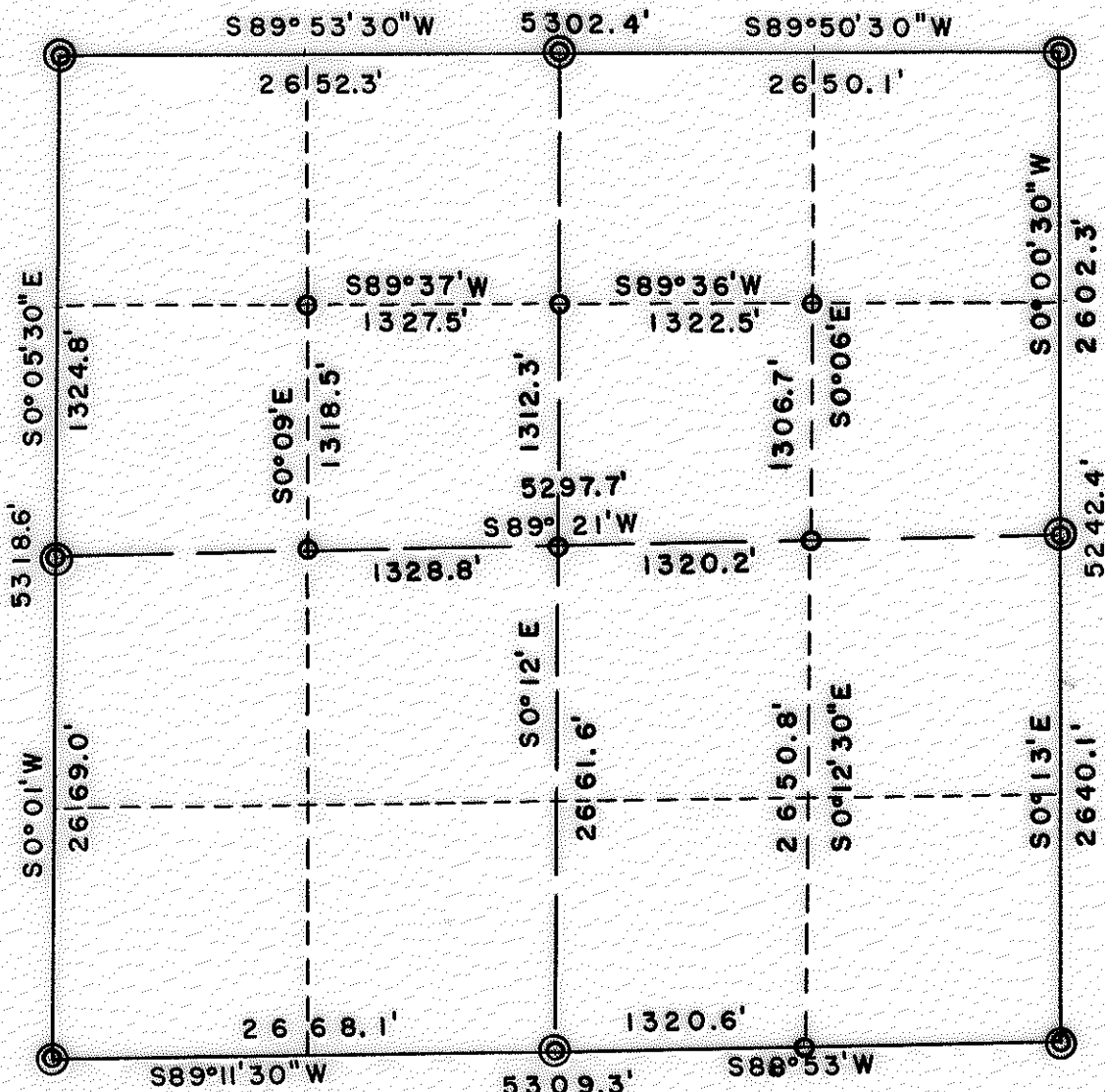
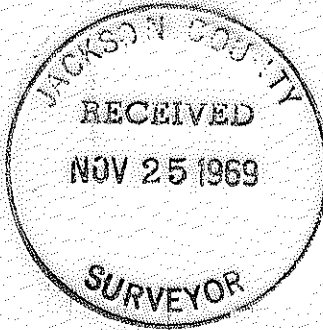
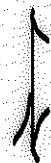


T. 33 S, R. 2 E, W. M.

S. 24 PLAT



Scale 1" = 1000'



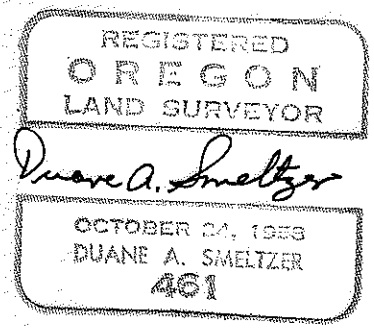
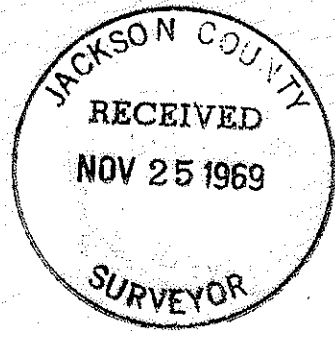
(2)

Subdivision S.24, T33S, R2E, W.M. continued.

INTERIOR LINES:

CN 1/16 corner-NE 1/16 corner N89°36'E 1322.5'  
 Set 5/8"x3' rebar & Aluminum Cap.  
 Scribed RS 461 BT 12" W.Fir S85°E 5.5'.  
 6" W.Fir N6°E 12.2'.

CN 1/16 corner-NW 1/16 corner S89°37'W 1327.5'.  
 Set 5/8"x3' rebar & Aluminum Cap.  
 Scribed RS 461 BT 6" W.Fir N10°E 5.8'.  
 8" W.Fir S23°E 22.6'.



Butte Falls, Oregon  
November 21, 1969

County Surveyor  
Jackson County Courthouse  
Medford, Oregon

Please record the following in Public Land Surveys.

FOR; Medford Corporation.

Object; Subdivision and monumentation of boundaries of Medco lands.

Subject; Section 24, T. 33S, R2E, W.M.

**NARRATIVE:** Found all exterior corners, Brass Caps and BTs. Ran Transit and Chain closed traverses. Solar bearings. Ran East half South Line. Set E 1/16 corner S.24/25 midway on line. Ran from E 1/16 corner 24/25 Northerly along 40 line to approximate NE 1/16, to NE corner, Southerly along East line to SE corner tie.

Ran S $\frac{1}{4}$  corner North to N $\frac{1}{4}$  corner, East to NE corner tie.

Ran approximate CN 1/16 West to approximate NW 1/16, to NW corner.

Ran NW corner South to W $\frac{1}{4}$  corner, ran East to approximate C $\frac{1}{4}$  tie.

Ran from W $\frac{1}{4}$  corner South to SW corner, ran East to S $\frac{1}{4}$  corner tie.

Calculated position and set C $\frac{1}{4}$  corner, E 1/16 24/25, CE 1/16, NE 1/16, CN 1/16, NW 1/16, CW 1/16 corners.

**SOUTH LINE:** S $\frac{1}{4}$  corner-SW corner S89°11'30"W 2668.1'.

SE corner-S $\frac{1}{4}$  corner S88°53'W, 2641.2'. E 1/16 corner 24/25, 1320.6'.

Set 5/8"x30" rebar & Aluminum Cap.

Scribed RS 461 BT 12" W.Fir S66°W 39.0'.

**EAST LINE:** NE corner-E $\frac{1}{4}$  corner. S0°00'30"W 2602.3'.

E $\frac{1}{4}$  corner-SE corner S0°13'E 2640.1'.

**NORTH LINE:** NE corner-N $\frac{1}{4}$  corner S89°50'30"W 2650.1'.

N $\frac{1}{4}$  corner-NW corner S89°53'30"W 2652.3'.

**WEST LINE:** NW corner-W $\frac{1}{4}$  corner S0°05'30"E 2649.6'.

W $\frac{1}{4}$  corner-SW corner S0°01'W 2669.0'.

**NORTH-SOUTH Center Line:** S $\frac{1}{4}$  corner-C $\frac{1}{4}$  corner N0°12'W 5286.2'.

0.0 feet S $\frac{1}{4}$  corner Set 5/8"x30" rebar & Aluminum Cap, at C $\frac{1}{4}$  corner.  
2661.5 Scribed RS 461 BT

C $\frac{1}{4}$  corner 12" D.Fir S74°W 33.6'  
12" D.Fir N50°W 18.5'

3973.7 " CN 1/16 corner

Set 5/8"x3' Aluminum Cap & rebar.

Scribed RS 461 BT

12" W.Fir S30°E 35.1'

6" W.Fir N42°W 12.8'

5286.2 " N $\frac{1}{4}$  corner Brass Cap

**EAST-WEST Center Line:** E $\frac{1}{4}$  corner-W $\frac{1}{4}$  corner S89°21'W 5298.0'.

0.0 feet E $\frac{1}{4}$  corner

1320.2 " CE 1/16 corner. Set 5/8"x3' rebar & Aluminum Cap.

Scribed RS 461 BT

10" W.Fir N60°W 21.0'.

6" W.Fir Due W 17.6'.

2640.3 " C $\frac{1}{4}$  corner

3969.1 " CW 1/16 corner. Set 5/8"x3' rebar & Aluminum Cap.

Scribed RS 461 BT

12" W.Fir N5°W 7.9'.

9" W.Fir S66°E 17.8'.

5298.0 " W $\frac{1}{4}$  corner Brass Cap.