

SURVEY FOR BOISE CASCADE CORPORATION P.O. BOX 100, MEDFORD, OREGON

CORNERS

12 $\frac{6}{7}$ Found a 2" iron pipe with a Cadastral Survey Brass Cap dated 1965.

$\frac{1}{4}$ $\frac{6}{7}$ Found - original Stone with $\frac{1}{4}$ on north face lying on the ground. At the intersection of the record distances from the original BTs I set a 1"x36" galvanized iron pipe 31" in the ground and topped with a 1"x1 1/2" bell reducer filled with pot metal and Stamped as shown below in 1/8" letters & numerals from which the original NW BT (now a badly burned and decayed D. fir stub) bears N50°W 19.2 feet & the original SW BT (now a 36" I.C. with scribe visible) bears S40°W 18.0 feet. I scribe a 12" D. fir "1/4 S6 RS787" in the upper blaze and "BT" in the lower blaze which bears N52°30'E 35.8 feet. The original stone now lies beside the pipe.

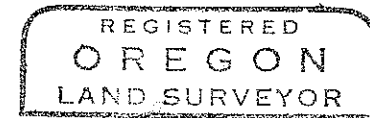
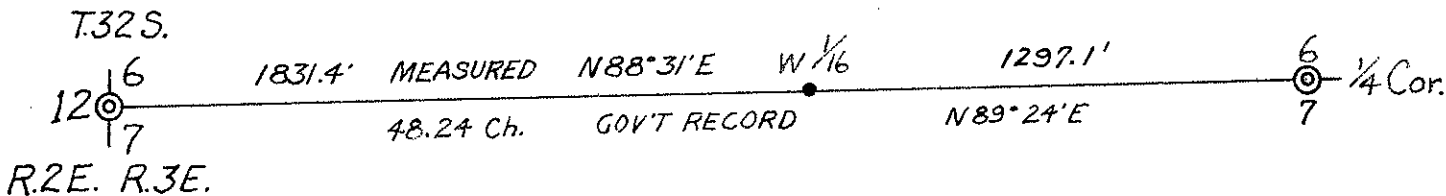
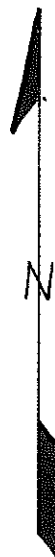


W $\frac{1}{16}$ - Established by Survey
(See report)

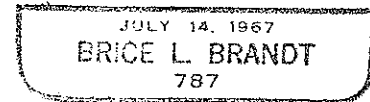
SCALE 1 in = 500 feet
DATE Sept. 4, 1969
SURVEY BY

Brice L. Brandt
BASIS OF BEARING
Solar Observation

Two Solar Observations were taken at the $\frac{1}{4}$ Corner with a one minute transit. The solars agreed within one minute.



Brice L. Brandt



SURVEY NARRATIVE TO COMPLY WITH ORS. 290.250
REVISED BY CHAPTER 555, O.L. 1963

FOR: BOISE CASCADE CORPORATION
P.O. BOX 100, MEDFORD, OREGON

PURPOSE: To remonument and rehabilitate the one-quarter corner common to Sections 6 and 7, Township 32 South, Range 3 East, Willamette Meridian and to establish and monument the west one-sixteenth corner common to Sections 6 and 7, Township 32 South, Range 3 East.

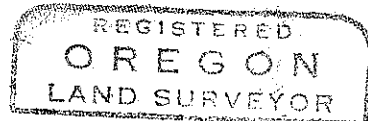
PROCEDURE: Ran a random transit traverse from the section corner common to Sections 6 and 7, Township 32 South, Range 3 East to the one-quarter corner common to Sections 6 and 7. At the proportionate distance between the above mentioned corners, we drove a 1" x 36" galvanized iron pipe topped with a 1 1/2" x 1" galvanized bell reducer filled with pot metal and stamped as shown below in 1/8" letters and numerals, 30" in the ground.

1969
W 1/16 S6
S7
RS787

NEW REFERENCES: I scribe a 27" Douglas fir "W 1/16 S6 RS787" in the upper blaze and "BT" in the lower blaze which bears N29°W 24.8 feet. I also scribe a 16" white fir "W 1/16 S7 RS787" in the upper blaze and "BT" in the lower blaze which bears S16°W 38.3 feet. The distances were measured to the face of the blaze and the compass declination was set at 20°E.

The field work was completed August 19, 1969 by B.L. Brandt and R.A. Morris.

See attached map.



Brice L. Brandt

