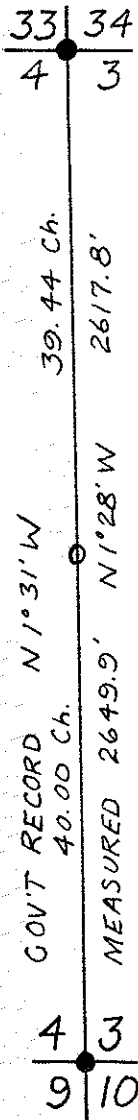


SURVEY FOR BOISE CASCADE CORPORATION P.O. BOX 100, MEDFORD, OREGON



T. 31 S., R. 3 E., W. M.
T. 32 S., R. 3 E., W. M.

SCALE 1 in = 1000 feet
DATE August 13, 1969
SURVEY BY

Brice L. Brandt
BASIS OF BEARING
Solar Observation

Two solar observations were taken on the first leg of the random traverse at the section corner $\frac{4}{3}$ with a $\frac{413}{910}$ one minute transit. The two agreed within one minute.



CORNERS

$\frac{33}{4} | \frac{34}{3}$

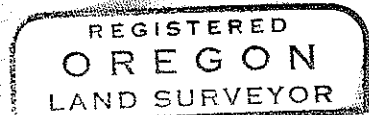
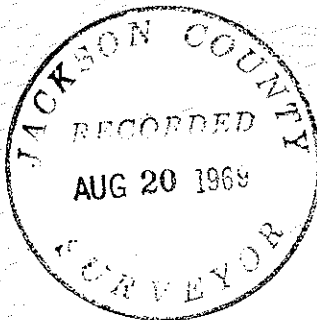
FOUND - 2" iron pipe with Cadastral Survey brass cap set in 1962 8" above the ground; 8" W. fir S 26° E 30.9 feet; 13 1/2" D. fir S 74° W 21.3 feet; 15" W. fir N 45° W 36.2 feet; Original 37" D. fir stump N 12° E 26.3 feet; Original 25" D. fir stump S 62° E 18.8 feet.

$\frac{4}{9} | \frac{3}{10}$

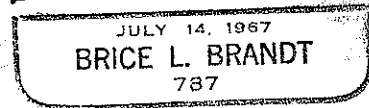
FOUND - 1" galvanized iron pipe 9" above the ground set by the County Surveyor in 1954 with the marks USBLM 1962 added. The original NW bearing tree bears N 9° W 31.0 feet. Also found several 1962 Cadastral Survey bearing trees.

$\frac{4}{9} | \frac{3}{10}$

RE-ESTABLISHED BY SURVEY



Brice L. Brandt



SURVEY NARRATIVE TO COMPLY WITH ORS. 290.250
REVISED BY CHAPTER 555, O.L. 1963

FOR: BOISE CASCADE CORPORATION
P.O. BOX 100, MEDFORD, OREGON

PURPOSE: To re-establish and monument the lost one-quarter corner common to Sections 3 and 4, Township 32 South, Range 3 East, Willamette Meridian and to define and mark the section line common to Sections 3 and 4.

PROCEDURE: Ran a random transit traverse from the section corner common to Sections 3, 4, 9 and 10, Township 32 South, Range 3 East north to the section corner common to Sections 3 and 4 Township 32 South, Range 3 East and Sections 33 and 34, Township 31 South, Range 3 East. After diligent and thorough search in the vicinity of the proportionate location of the one-quarter corner common to Sections 3 and 4 and finding no trace of the original corner monument or its accessories, I set a 1" x 36" galvanized iron pipe capped with a 1 1/2" to 1" galvanized bell reducer filled with pot metal and stamped as shown below in 1/8" letters and numerals and driven 30" in the ground at the proportionate distance between section corners.

1/4
S4 † S3
1969
RS787

NEW REFERENCES: I scribed a 23" Douglas-fir, which bears S56°W 22.9 feet, "1/4 S4 RS787" in the upper blaze and "BT" in the lower blaze. I also scribed a 14" Douglas-fir, which bears N7°E 34.6 feet, "1/4 S3 RS787" in the upper blaze and "BT" in the lower blaze. The distances were measured to the face of the lower blazes and the compass variation was set at 20° East.

The field work was completed April 10, 1969 by B.L. Brandt, Sam Richardson and Douglas Pfaff.

See attached map.

