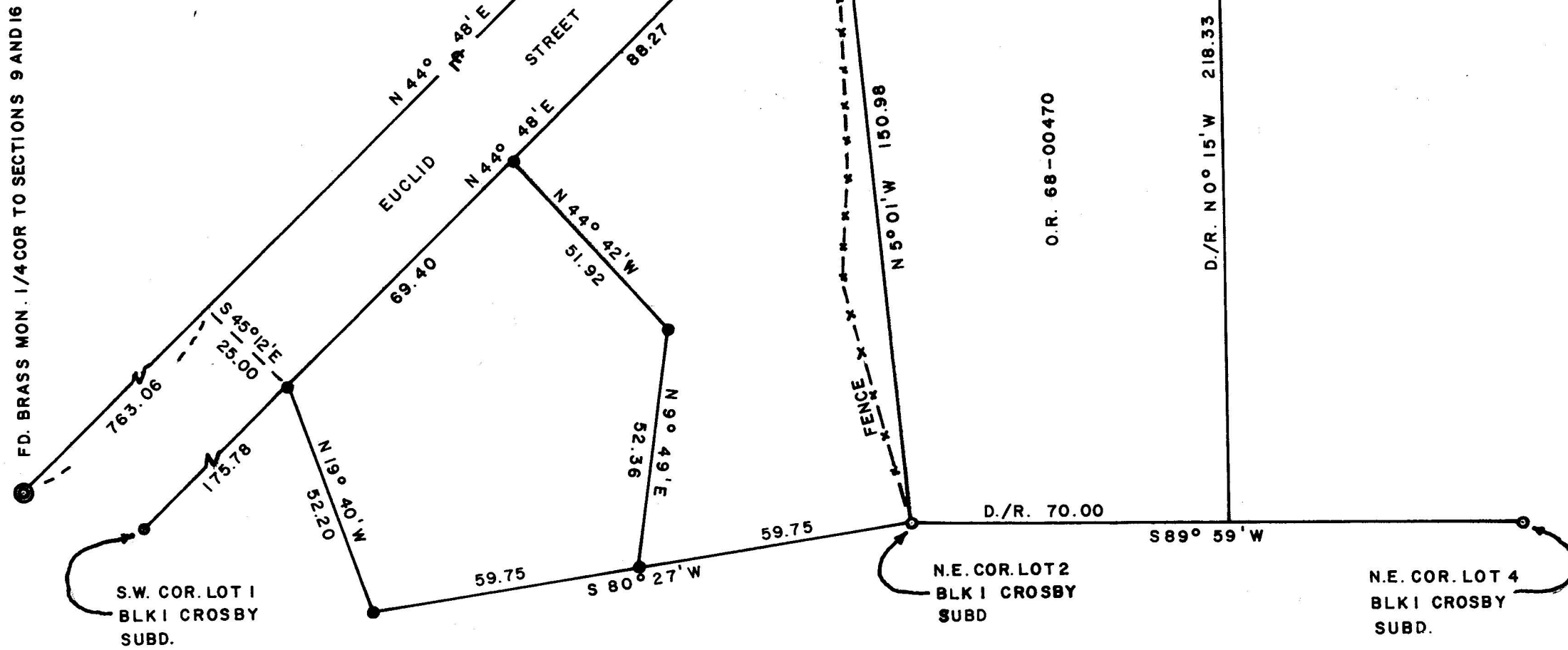


FD CITY MON(BRASS CAP)
EUCLID & PENNSYLVANIA ST.S



SCALE 1"=30'

BASIS OF BEARINGS CROSBY SUBDIVISION

LEGEND

- FD. 3/4" I. PIPE
- SET 5/8" I. PIN

SURVEY

FOR

R.L. CROSBY ASHLAND, ORE.
OF TRACT

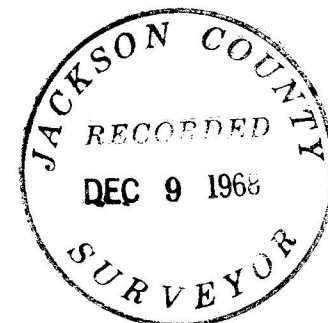
SITUATE IN THE S.E. 1/4 SEC 9 T 39 S R 1 E W.M.
IN THE CITY OF ASHLAND ORE.

GEORGE BURRELL L.S. ASHLAND, ORE.
NOV 1, 1968

REGISTERED
OREGON
LAND SURVEYOR

George Burrell

JULY 10, 1964
GEORGE R. BURRELL
638

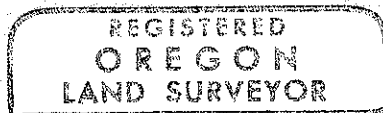
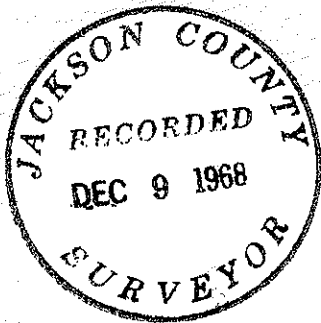


SURVEY NARRATIVE TO COMPLY WITH O.R.S. 209.250
REVISED BY CHAPTER 555, O.L. 1963

FOR: R. L. Crosby
660 Pracht St.
Ashland, Oregon

PURPOSE: To monument the corners of and partition into two (2) lots the tract shown as Tax Lot 8400 on the Assessor's Map 391E 9DC.

PROCEDURE: Established the East Boundary of the tract by establishing the West Boundary Line of the tract described in O.R. 68-00470 on Deed Record bearing from the Southwest Corner thereof. The most Northerly Corner of Lot 2, Block 1, CROSBY SUBDIVISION, was established on plat record distance from the Southwest Corner Lot 1, Block 1, CROSBY SUBDIVISION. The Westerly line of this tract was established on plat record distance and bearing from the most Northerly Corner of Lot 2, Block 1, CROSBY SUBDIVISION. The remaining lines being established as shown on the accompanying map.



George Burrell

