

3876

FD 2" I. PIPE
1/4 COR SEC
5 AND 8

FD 2" I. PIPE
S 49° 56' E
77.83

FD 2" I. PIPE N.W.
COR. GVT. LOT 1
SEC 8

FD 1" I. PIPE
N 25° 57' 10" W
15.16

FD 1" I. PIPE
S 61° 01' 20" W 20.03

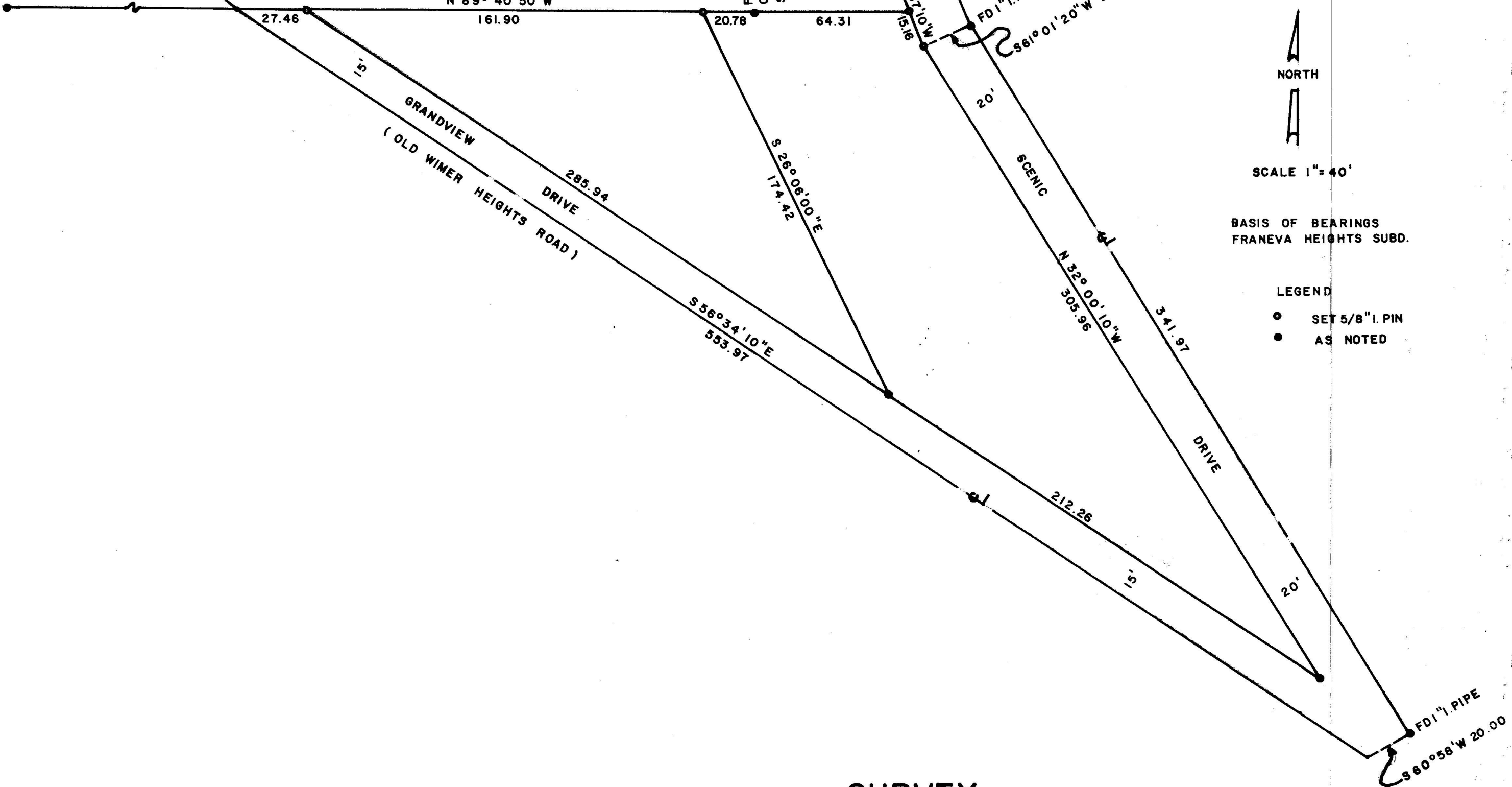


SCALE 1" = 40'

BASIS OF BEARINGS
FRANEVA HEIGHTS SUBD.

LEGEND

- SET 5/8" I. PIN
- AS NOTED



SURVEY

FOR
 NEWTON DEHAVEN ASHLAND, ORE.
 OF TRACT
 SITUATE IN N.E. 1/4 SEC 8 T39S R1E WM.
 GEORGE BURRELL L.S. ASHLAND, ORE
 NOV 12, 1968

REGISTERED
 OREGON
 LAND SURVEYOR

George Burrell

JULY 10, 1964
 GEORGE R. BURRELL
 638



3876

SURVEY NARRATIVE TO COMPLY WITH O.R.S. 209.250

REVISED BY CHAPTER 555, O.L. 1963

FOR: Newton DeHaven
215 Scenic Drive
Ashland, Oregon

PURPOSE: To partition the tract as shown on the accom-
panying map.

PROCEDURE: Established the West line of Scenic Drive from
city monuments found at centerline angle points.

Grandview Drive known also as the Old Wimer
Heights Road was established according to record
of 1918 City of Ashland map of street survey
by F. M. Walker, Engineer, said map in posses-
sion of City of Ashland, Engineering Dept.

The present road location substantially agrees
with this record location.

The Northerly line of parent tract herein sur-
veyed was established on a line connecting the
Northwest corner Government Lot 1 with the
quarter corner to sections 5 and 8.

The partition line was established from clients
request.

REGISTERED
OREGON
LAND SURVEYOR

George Burrell

JULY 10, 1964
GEORGE R. BURRELL
638

JACKSON COUNTY
RECORDED
DEC 6 1968
SURVEYOR