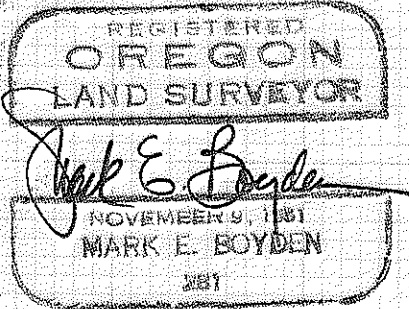
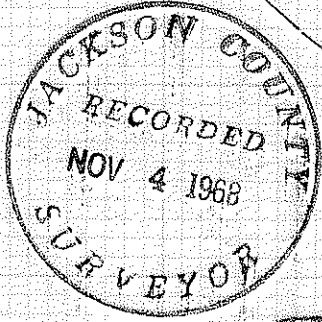
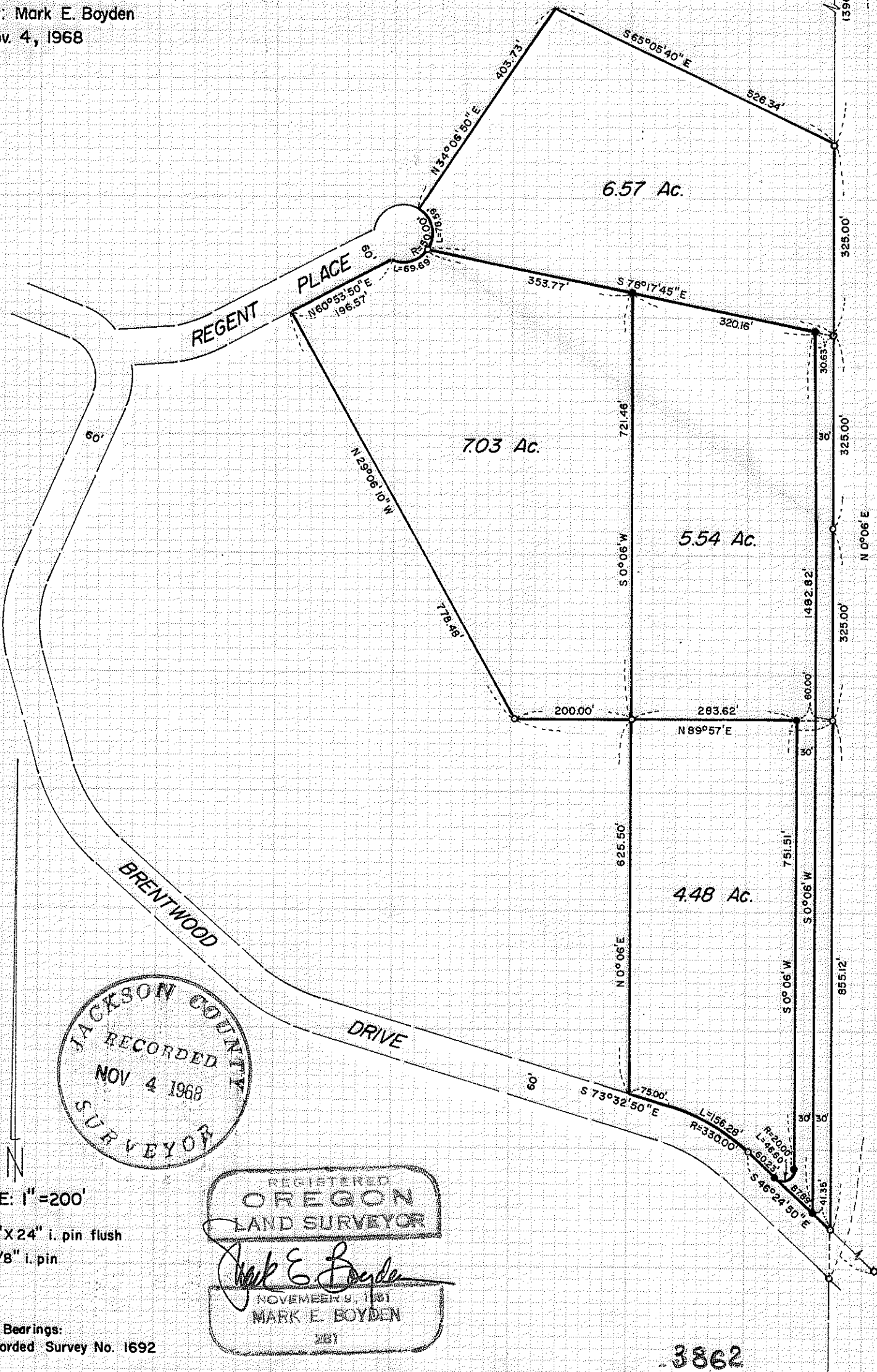


3862

1/4 Sec. Cor. common to Secs. 28 & 33

Survey For:
FAYDREX, INC.
Located in the West 1/2,
Section 33, T.35S.R.1W, W.M.
By. Mark E. Boyden
Nov. 4, 1968



SCALE: 1" = 200'
● set 5/8" X 24" i. pin flush
○ found 5/8" i. pin

Basis of Bearings:
Recorded Survey No. 1692

3862

SURVEY NARRATIVE TO COMPLY WITH O.R.S. 209.250

FOR: Faydrex, Incorporated
1054 South Riverside Avenue
Medford, Oregon

PURPOSE: To monument and describe in four parcels, the three tracts previously monumented by this office on Recorded Survey No. 2426.

PROCEDURE: Found monuments as shown for control, setting the new corner monuments as indicated on the map to accompany this report.

November 4, 1968

