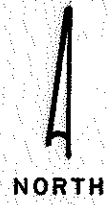
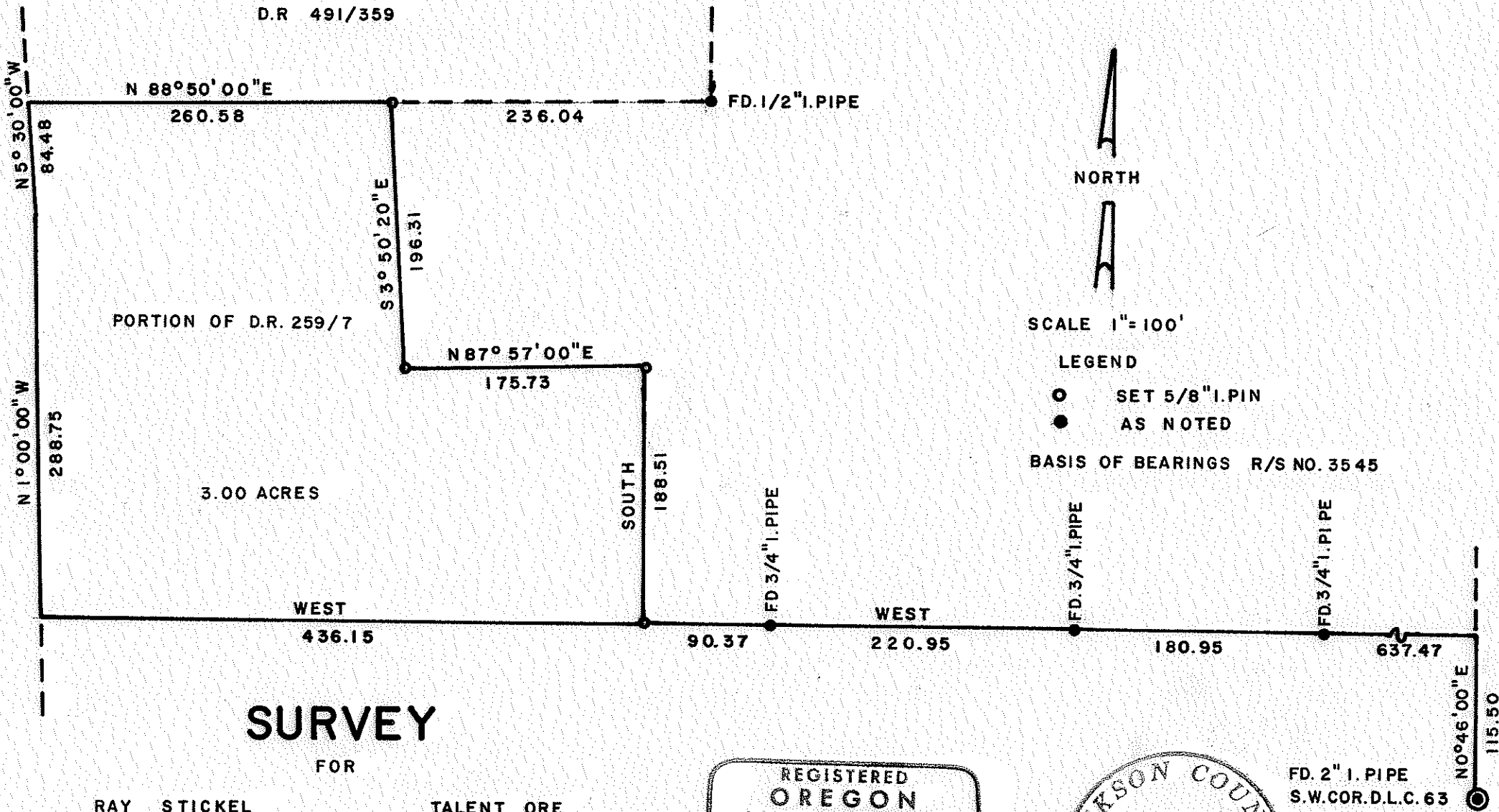


3833

EE8C-



SCALE 1"=100'

LEGEND

- SET 5/8" I. PIN
- AS NOTED

BASIS OF BEARINGS R/S NO. 3545

SURVEY

FOR

RAY STICKEL TALENT ORE

OF TRACT

SITUATE IN S1/2 SEC 27 TWP 38S RIW W.M.

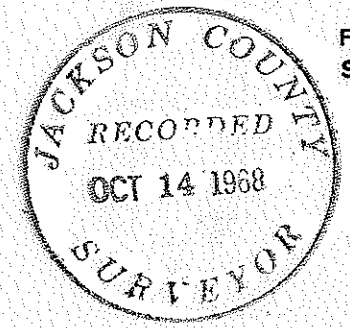
GEORGE BURRELL L.S. ASHLAND ORE

SEPT 28, 1968

REGISTERED
OREGON
LAND SURVEYOR

George Burrell

JULY 10, 1964
GEORGE R. BURRELL
638



FD. 2" I. PIPE
S.W. COR. D.L.C. 63

3833

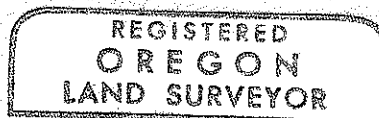
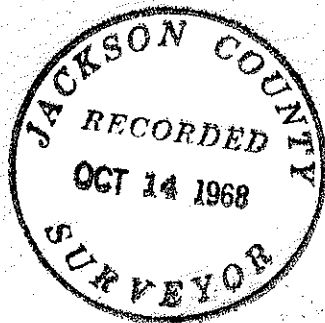
SURVEY NARRATIVE TO COMPLY WITH O.R.S. 209.250

REVISED BY CHAPTER 555, O.L. 1963

FOR: Ray Stickel
1031 Beeson Lane
Talent, Oregon

PURPOSE: To monument and describe the 3.00 acre tract
as shown on accompanying map.

PROCEDURE: The East line of said tract was established
according to clients direction. The South
line of this tract was established by pro-
jecting the South line of the tract described
in Volume 259, Page 7, D.R., J.C., O. West
from the monuments of Recorded Survey No.
3545 to the Southwest corner of tract described
in Vol. 259, P. 7, D.R., J.C.,O. as determined
in Recorded Survey No. 3545. The West line
of the tract described in Vol. 259, P. 7,
D.R., J.C.,O. was established according to
Deed Record from the above mentioned South-
west corner position. The South line of the
tract described in Vol. 491, Page 359, D. R.,
J.C.,O. was established on record bearing
from the Southeast corner.



George R. Burrell

