

3832

2888

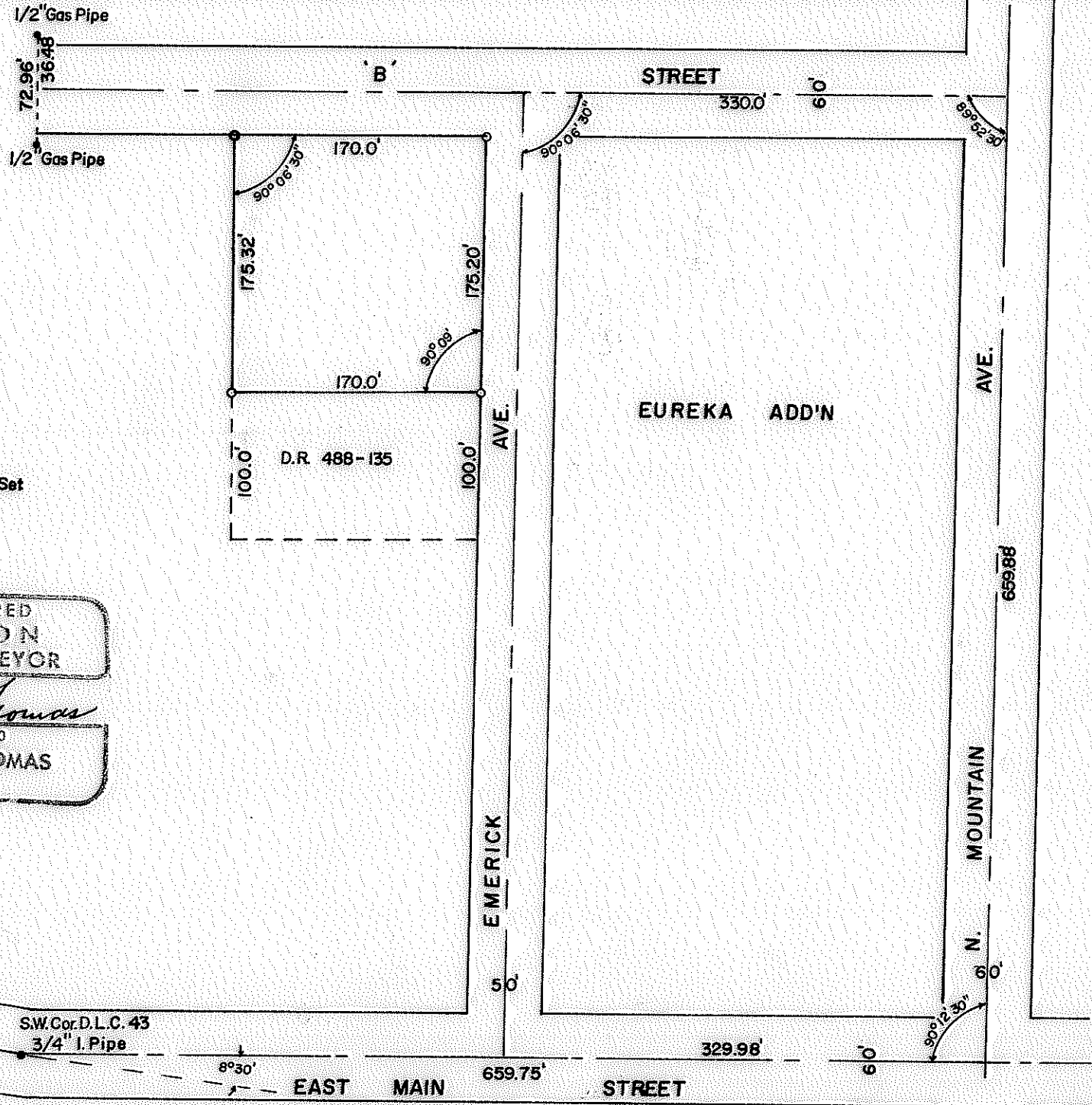
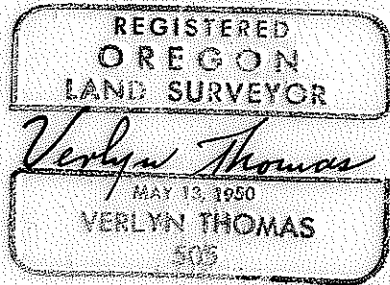
Survey For VINCENT OREDSON
 D.L.C. 43, T.39S.,R.1E., W. M.
 ASHLAND, OREGON
 AUGUST 24, 1968



Scale: 1" = 100'



LEGEND
 ○ 5/8" x 24" I. Pin Set
 ● MON. FOUND



3832

SURVEY NARRATIVE TO COMPLY WITH O.R.S. 209.250
 REVISED BY CHAPTER 555, O.L. 1963.

FOR: Vincent Oredson
 236 East Main St.
 Ashland, Oregon.

PURPOSE: To survey and monument a metes and bounds parcel at the corner of
 Emerick and "B" streets in Ashland, Oregon.

PROCEDURE: Field books on file in the Ashland City Hall were researched for
 data relating to official street centers in the area.

The center-line intersection of East Main and Mountain Avenue
 was established from a reference point described as a "+" on curb,
 26.95 feet from the intersection (McKissick field book of 1911,
 pages 92 and 93), and the record deflection angle at the S.W.
 Corner of D.L.C. 43 (McKissick 1911 field book), resulting in a
 distance of 659.75 feet between points (McKissick 659.8 feet).
 McCall's bearing for East Main Street in 1888, N89°53'E.

The center-line intersection at Mountain Ave. and "B" street was
 established from reference points (McKissick 1911 field book.)

The alignment of "B" street, westerly, determined as the midpoint
 between two very old $\frac{1}{2}$ " gas pipes found at the angle point in "B"
 street.

Emerick was then established according to the Plat of Eureka
 Addition.

The alignment of "C" street (not constructed) but referred to in
 Deeds, was determined proportionally from the above described
 procedure, and the property surveyed and monumented accordingly,
 as shown on the accompanying Plat.

