



NORTH

SCALE 1"=30'

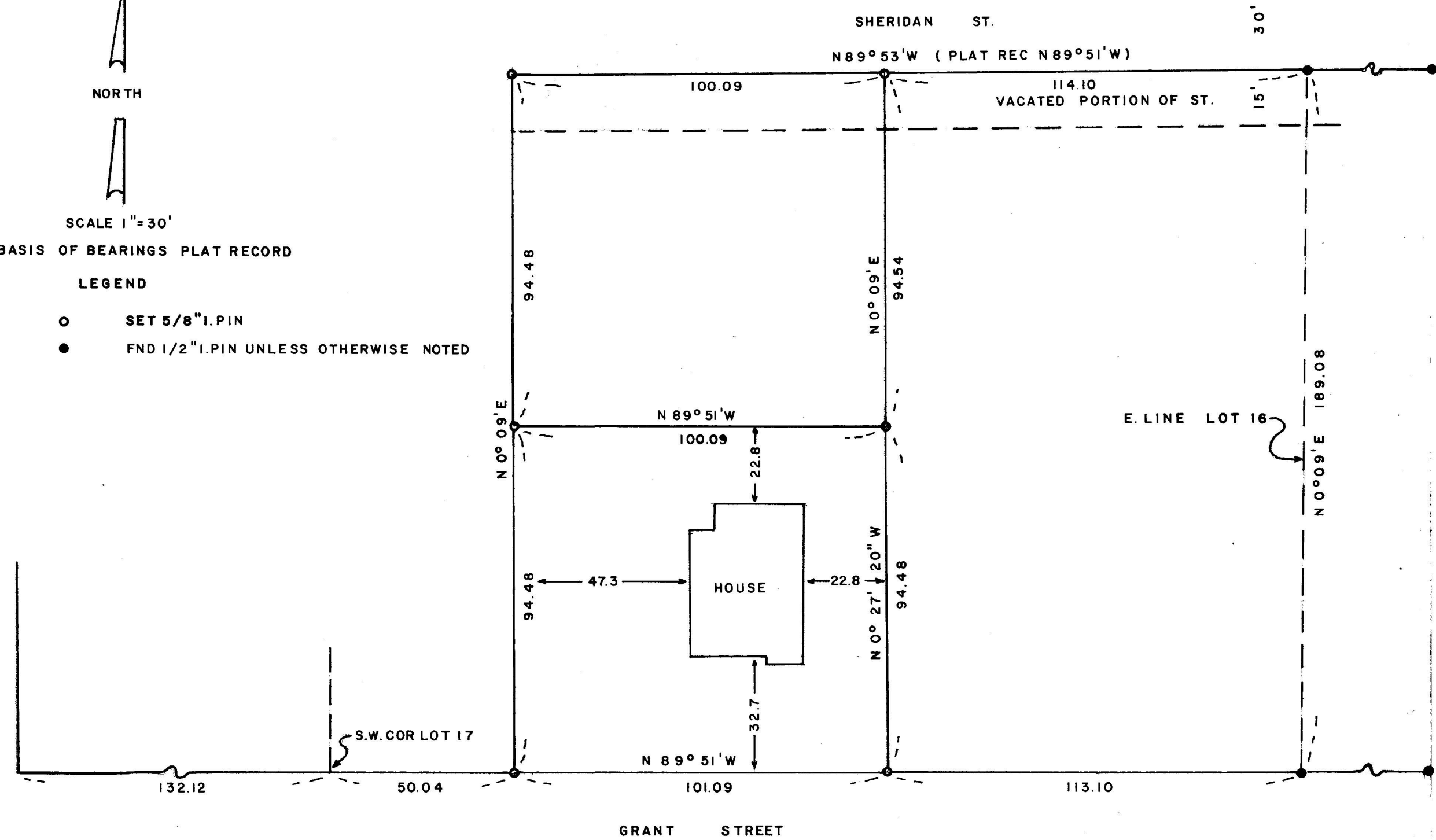
BASIS OF BEARINGS PLAT RECORD

LEGEND

- SET 5/8" I. PIN
- FND 1/2" I. PIN UNLESS OTHERWISE NOTED

FND 3/4" I PIPE
SE. COR LOT 19

GROVE ST.
60.00



SURVEY

FOR
 VANVLEET & ASSOC ASHLAND, ORE
 OF TRACT

SITUATE IN LOTS 16 & 17 W.C. MEYER ADDN.
 TO THE CITY OF ASHLAND IN THE N.E. 1/4 SEC 5 T39S R1E
 GEORGE BURRELL L.S. ASHLAND, ORE
 SEPT 3, 1968

REGISTERED
 OREGON
 LAND SURVEYOR

George Burrell

JULY 10, 1964
 GEORGE R. BURRELL
 638



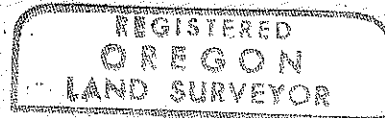
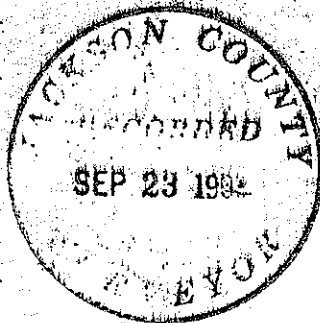
SURVEY NARRATIVE TO COMPLY WITH O.R.S. 209.250

REVISED BY CHAPTER 555, O.L. 1963

FOR: Van Vleet & Assoc.
375 Lithia Way
Ashland, Oregon

PURPOSE: To monument the tract contained in Tax Lot No. 700 (39 1 E 5 AC) and to monument and describe for deed conveyance the North one half of said tract.

PROCEDURE: Using the monuments found at the Southeast corner of Lot 19 and the Southeast corner of Lot 16, I reestablished the deed corners of the above mentioned tract by proportional measurement along the North line of Grant Street between said corners. The same proportion was used for distance measurements along the South line of Sheridan Street.



George Burrell

