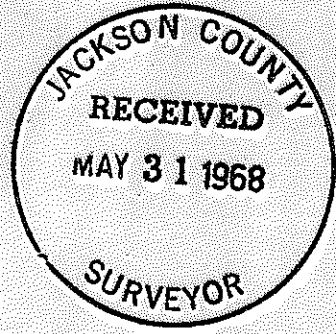


SURVEY FOR WARREN KIMMONS

IN LOT 1, PERRY SUBDIVISION
 D.L.C. 74, T. 37 S., R. 2 W., W.M.
 Jackson County, Oregon.
 March 19, 1968

9228-3725

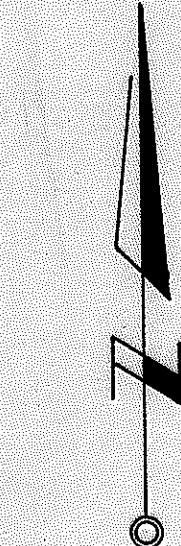


LEGEND

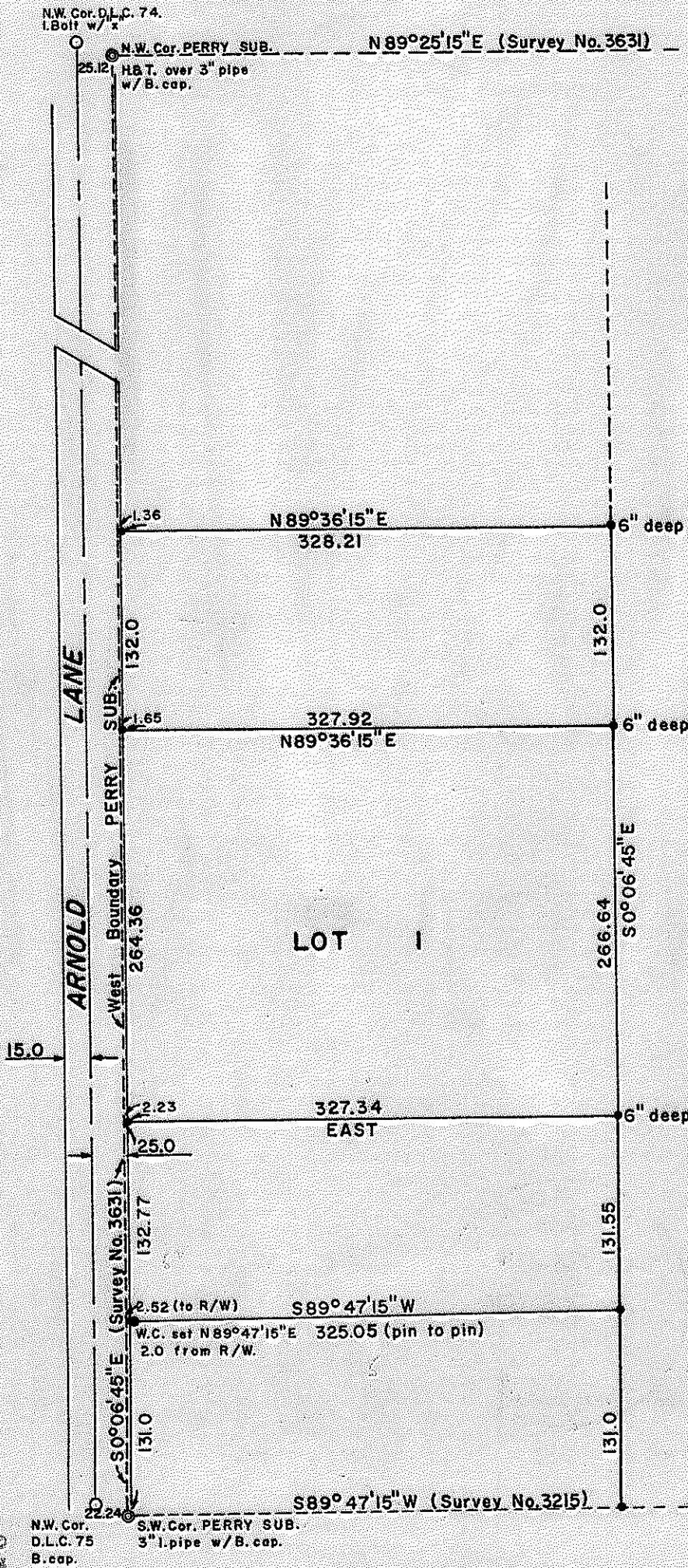
- 5/8X24" I. Pin set.
- ⊙ Orig. PERRY SUB. Mon. found.
- County re-estab. D.L.C. corners.
- PERRY SUB. boundarys.



LOT 2



Scale: 1"=100'
 Basis of Bearings: Survey No. 3631



9228-3725

SURVEY NARRATIVE TO COMPLY WITH O.R.S. 209.250
REVISED BY CHAPTER 555, O.L. 1963.

FOR: Warren Kimmons
129 Arnold Lane
Medford, Oregon

PURPOSE: To survey and monument various parcels in Lot 1, PERRY SUBDIVISION,
according to legal descriptions furnished.

PROCEDURE: Recovered the southwest and northwest corners of PERRY SUBDIVISION,
as described in Recorded Survey No. 3215. Also recovered the
reestablished northwest corner of D.L.C. 75, and the reestablished
northwest corner of D.L.C. 74, as described in Recorded Survey
No. 3028. The parcels were surveyed relative to the southwest
corner of PERRY SUBDIVISION. The front pins were set 25.0 feet
east of a line between the aforementioned reestablished D.L.C.
corners, said line being the presently accepted center-line of
Arnold Lane, as shown on the accompanying Plat. The dimensions
shown on the west end of the parcels are as measured along the
west boundary of PERRY SUBDIVISION, and are not between the $\frac{5}{8}$ "
pins set. The distances measured between the Subdivision line,
and the presently accepted R/W line are as shown on the plat.

