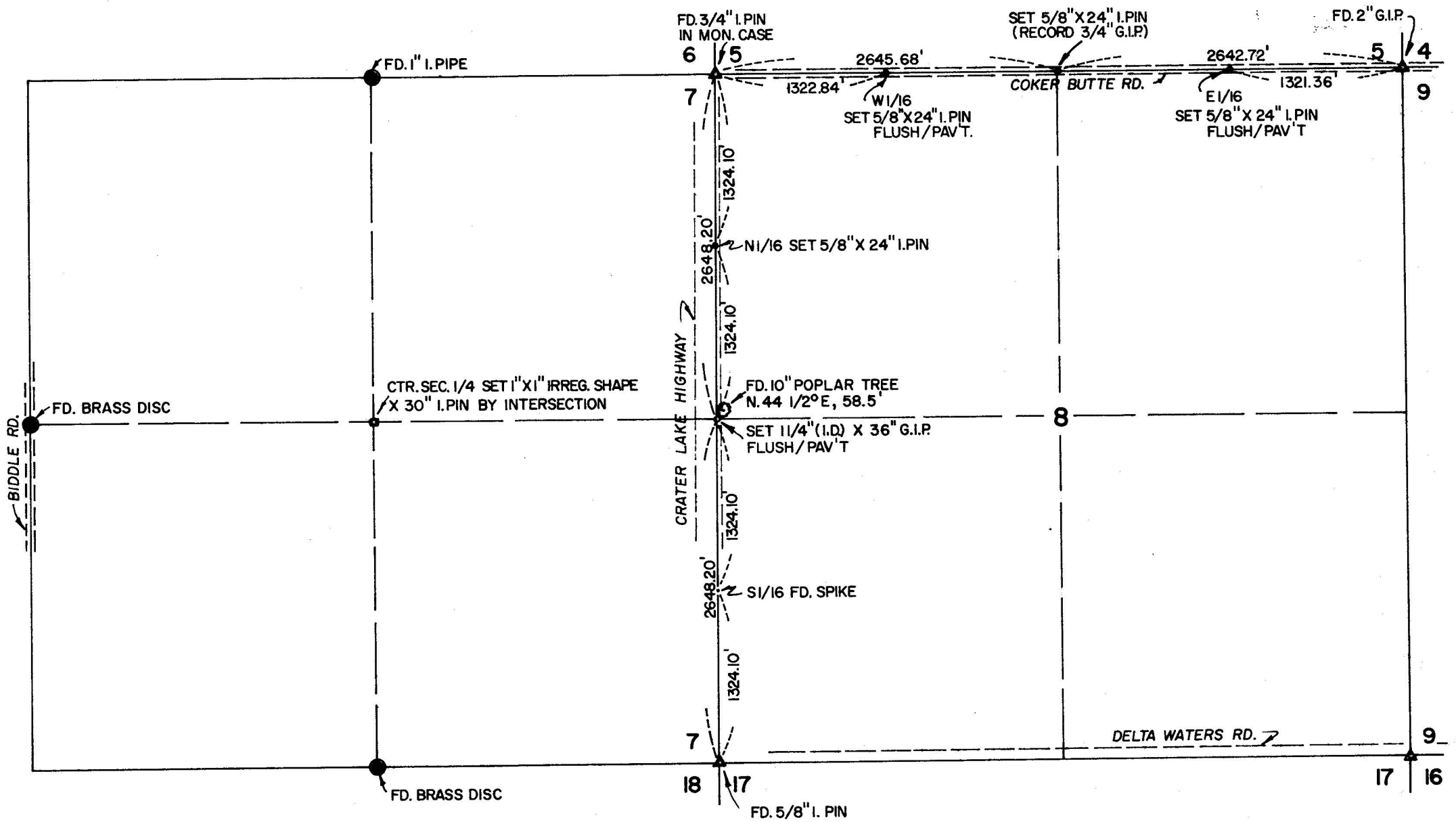


RE-ESTABLISHMENT OF GOVERNMENT CORNERS WITHIN SECTION 8 AND THE CENTER 1/4 CORNER OF SECTION 7, TOWNSHIP 37 SOUTH, RANGE 1 WEST, W.M., JACKSON COUNTY, OREGON.

BY: THE CITY ENGINEER'S OFFICE, MEDFORD, JACKSON COUNTY, OREGON  
 C. LIND MCBETH, REG. OREGON LAND SURVEYOR.  
 C. P. WESTWOOD, CITY ENGINEER.

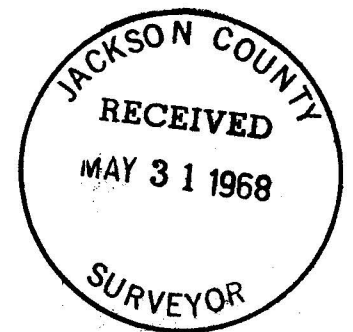
DATE: MAY, 1968



SCALE: 1"=1000'

LEGEND

- = FD. BRASS DISC & 1" I. PIPE
- ▲ = SECTION CORNER
- = SET 5/8" X 24" I. PIN
- = SET 1 1/4" (I.D.) X 36" G.I.P.
- = SET 1" X 1" IRREG. SHAPE X 30" I. PIN

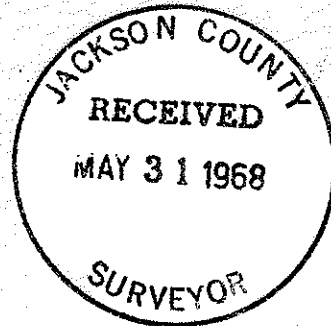


3721

3721

Procedure and References (Cont.)

Set straddle points across the East-West center line. Then set the instrument on the re-established 1/4 corner between 7 & 8 and sighted to the 1/4 corner between 12 & 7 and set the pin at the intersection of these two centerlines. From which I set a hub and tack to the East, 42.78 feet and a hub and tack to the West, 53.29 feet for temporary references.  
See F.B. #1030.



Date & Monument (Cont.)

A telephone pole #5 bears N 70° W, 96.82 feet to a PK nail in the South face, 6' above the ground.

A power pole # B11179 bears S 65° W, 51.78 feet to a PK nail in the North face 6' above the ground.

Procedure & References

There being no references on this corner I set same on behalf of the City of Medford for Aerial flight control at a point halfway between the corner common to 5,6,7 & 8 and the 1/4 corner common to 5 & 8.

\* \* \*

Subject

Re-establishment of 1/4 corner common to Sections 5 & 8, T 37 S R1W W.M.

Date & Monument

12-20-66 Set a 5/8"x24" iron pin for the true corner from references noted in County recorded survey #1722. Dug a hole 14" in diameter and 20" deep in search of a 3/4" iron pipe that was found 8/40 by surveyor C.Z. Boyden, but we found no evidence of any pipe, therefore I set said pin per survey #1722; from which the following references are found to be in good condition;

A telephone pole #2/905 bears N 50° W, 32.72 feet.

A power pole #B8267 bears S 50° W, 43.13 feet.

\* \* \*

Subject

Re-establishment of the East 1/16 corner between Sections 5 & 8; T 37 S, R1W.

Date & Monument

12-22-66 Set a 5/8"x24" iron pin for the true corner flush with the pavement on Coker Butte Road. Found no evidence of any pipe. Therefore I set the following references to this corner as follows:

A power pole #B783 bears S 60° E, 33.33 feet to a nail and shiner in the southwest face.

A telephone pole #15 bears N 7° W, 20.48 feet to a nail and shiner in the West face.

A lane runs N & S from Coker Butte Road.

A Medford Water line blow-off valve bears S 70° W, 54 feet.

\* \* \*

Subject

Re-establishment of the center 1/4 corner Section 7, Township 37 S Range 1 West W.M., Jackson County, Oregon.

Date & Monument

1-5-67 Set 1"x1" irregular shaped, 30" iron pin, 3" under surface of the Medco Haul road.

Procedure and References

I "wiggled" in between the North and South quarter corners after having found same to be in good condition.

Mr. Mark E. Boyden Co. Surveyor  
County Court House  
Medford, Oregon

April 25, 1968

Subject

Re-establishment of the government corners within Sections 7 & 8 Township 37 South, Range 1 West Willamette Meridian, Jackson County, Oregon.

Date & Monument

12-12-66: Set a 1 1/4"x36" galvanized iron pipe flush with pavement on Crater Lake Avenue for the true corner between Sections 7 & 8, T 37 S R1W, W.M.

Procedure & Reference

County Surveyor's recorded survey #853, found original 10" poplar tree N 44 1/2° E, 58.5 feet; the only remaining evidence. This corner was probably destroyed or buried by OSHD construction. The above pipe was set by proportionate distance between section corners, from which the following references are set out:

A 20" poplar bears N 89 3/4° E, 77.45 feet to a spike in the north face.

A PK nail in the asphalt shoulder bears West, 48.85 feet.

A 20" poplar bears N 44 1/2° E, 58.53 feet to a spike in the northwest face.

\* \* \*

Subject

Re-establishment of the North 1/16 corner between Sections 7 & 8, T 37 S, R1W.

Procedure & References

This corner was probably destroyed or buried by OSHD construction in 1966. There is no record of this corner so I set it on behalf of the City of Medford for aerial flight control at a point halfway between the corner of 5,6,7 8 and 1/4 corner between 7 & 8.

Date & Monument

12-9-66 Set a 5/8"x24" iron pin for the true North 1/16 corner between Sections 7 & 8 & West of the guard rail along the relocated Crater Lake Avenue from which the following references are set out:

Power Pole #3740 bears S 88° E, 47.38 feet to nail and shiner on the South face.

A guard rail post bears N 20° E, 28.38 feet to a nail and shiner in the southwest top of post.

A private driveway leads to the East just North and opposite the corner.

\* \* \*

Subject

Re-establishment of the West 1/16 between Sections 5 & 8, T 37 S, R1W, W.M.

Date & Monument

12-20-66 Set a 5/8"x24" iron pin flush with the pavement surface on Coker Butte Road for the true corner from which the following references are set out;