

SURVEY IN SECTION 23
T. 37 S., R. 3 E., W.M.

FOR
RICHARD HOLZHAUSER
&
JOHN GREB

SCALE 1" = 1000'

SURVEY BY
CHARLES H. HURST
MEDFORD, OREGON

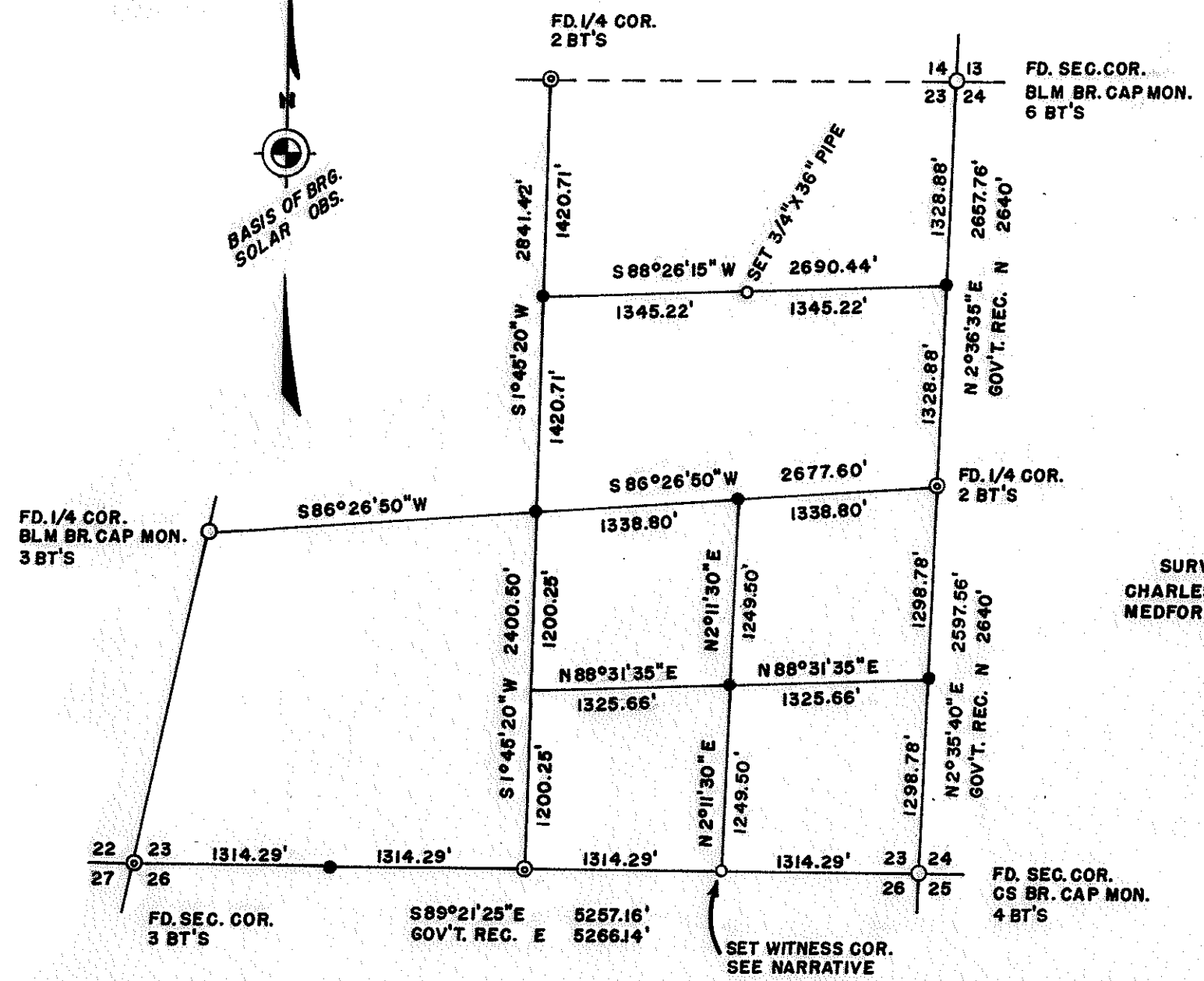
LEGEND
● SET 3/4" X 30" IRON PINS
⊙ SET 3/4" X 30" IRON PINS WITH BR. CAP

REGISTERED
OREGON
LAND SURVEYOR

Charles H. Hurst

OCTOBER 30, 1959
CHARLES H. HURST
483

DEC 20 1967



N 1/16 corner common to Sections 23 and 24

Set a 3/4"x30" iron pin for corner from which I scribed a 13.2" Douglas fir "N 1/16 S 24 483 BT" which bears N45°06'E 46.47 feet; a 15.6" Douglas fir which bears N26°13'W 50.30 feet.

CE 1/16 corner Section 23

Set a 3/4"x30" iron pin for corner from which I scribed an 18" Douglas fir "CE 1/16 S 23 483 BT" which bears N17°E 7.23 feet; a 20" Douglas fir "CE 1/16 S 23 483 BT" which bears S21°W 15.60 feet.

Section corner common to Sections 22, 23, 26 and 27

Set a 3/4"x30" brass capped iron pin for corner from which an original witness tree bears N30°W 43.79 feet to face; a 17.4" Douglas fir original witness tree with scribing intact bears N61°E 36.66 feet; a Black oak snag shell with scribing intact bears S80°E 19.80 feet to face; a 22.9" Ponderosa pine original witness tree with scribing intact bears S50°W 28.70 feet to face; scribed a 12.6" Douglas fir "T37S R3E S 26 483 BT" which bears S65°E 47.33 feet to center.

1/4 corner common to Sections 23 and 24

Found stone monument at which point I set a 3/4"x30" brass capped iron pin and placed stone alongside. A 20" Black oak original witness tree bears N87°W 3.30 feet to face; a 23.5" Black oak original witness tree with scribing intact bears S87°E 19.80 feet to face.

Proportionate 1/4 corner common to Sections 23 and 26.

Set a 3/4"x30" brass capped iron pin for corner from which I scribed a 15.3" Douglas fir "1/4 S 26 483 BT" which bears S64°E 39.38 feet; a 10.3" Douglas fir "1/4 S 23 483 BT" which bears N84°W 20.46 feet.

NE 1/16 corner Section 23

Set a 3/4"x36" iron pipe for corner from which I scribed a 13" Black oak "NE 1/16 S 23 483 BT" which bears S17°35'E 27.10 feet; a 14.3" Douglas fir "NE 1/16 S 23 483 BT" which bears N55°35'W 16.60 feet.

DEC 20 1967

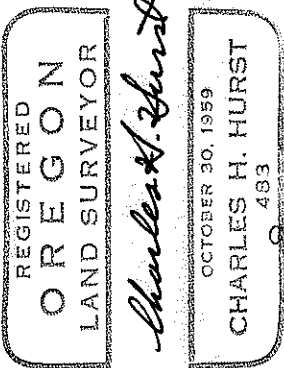
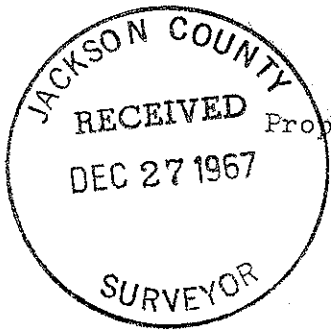
N 1/4 corner common to Sections 14 and 23

Found a mound of stone at center of which I set a 3/4"x30" brass capped iron pin from which a 60"+ Douglas fir original witness tree bears S45°E 23.76 feet; a Douglas fir original witness tree, now a down snag with scribing intact, bears North 13.20 feet. I scribed a 28.5" Sugar pine "1/4 S 14 483 BT" which bears N76°E 50.85 feet; a 19" Douglas fir which bears S89°W 63.70 feet.

C 1/4 corner Section 23

Set a 3/4"x30" iron pin for corner from which I scribed a 14 1/2" Douglas fir "C 1/4 S 23 483 BT" which bears N2°33'E 55.78 feet; a 16 1/2" Douglas fir "C 1/4 S 23 483 BT" which bears S37°W 35.89 feet.

All witness trees were measured to center unless otherwise noted. All iron pins are marked with the appropriate corner designation.



Survey for: Richard Holzhauser
Butte Falls Star Route Box 46
Eagle Point, Oregon 97524

John Greb
7782 Gladstone
White City, Oregon 97501

Survey by : Charles H. Hurst, L.S.
28 N. Oakdale
Medford, Oregon 97501

Bearing : Solar observation at the E $\frac{1}{4}$ corner of Section 23

Purpose : Holzhauser: To set the corners and define the
boundaries of the W $\frac{1}{2}$ SE $\frac{1}{4}$ and south
boundary of the SW $\frac{1}{4}$ Section 23.

Greb: To set the corners and define the
boundaries of the S $\frac{1}{2}$ NE $\frac{1}{4}$ and set
the corners pertaining to the
NE $\frac{1}{4}$ SE $\frac{1}{4}$ Section 23.

PROCEDURE

Run a closed traverse around the S $\frac{1}{2}$ and the S $\frac{1}{2}$ NE $\frac{1}{4}$ Section 23 and set corners at calculated positions from the random line. Corners set and witnessed are as follows:

S 1/16 corner common to Sections 23 and 24

Set a 3/4"x30" iron pin for corner from which I scribed a 14.5" Incense cedar "S 1/16 S 24 483 BT" which bears N57°23'E 10.00 feet; a 16" Douglas fir "S 1/16 S 23 483 BT" which bears S12°01'W 23.00 feet.

SE 1/16 corner Section 23

Set a 3/4"x30" iron pin for corner from which I scribed a 10.4" Incense cedar "SE 1/16 S 23 483 BT" which bears N59°40'W 4.60 feet; an 11" Incense cedar "SE 1/16 S 23 483 BT" which bears S53°45'E 14.40 feet.

E 1/16 corner common to Sections 23 and 26

Corner falls in river. Set a witness corner which bears on the south boundary of Section 23 easterly 49.52 feet which is a 3/4"x30" iron pin marked "WC E 1/16 S 23" from which I scribed a 20" Douglas fir "E 1/16 S 24 483 BT" which bears S84°E 14.38 feet; a 26 1/2" Douglas fir "E 1/16 S 23 483 BT" which bears N45°E 25.53 feet.

W 1/16 corner common to Sections 23 and 26

Set a 3/4"x30" iron pin for corner from which I scribed a 26" Ponderosa pine "W 1/16 S 26 483BT" which bears S33°W 31.00 feet; a 15.3" Black oak "W 1/16 S 23 483 BT" which bears N56 1/2°W 8.40 feet.

CN 1/16 corner Section 23

Set a 3/4"x30" iron pin for corner from which I scribed an 8.5" Black oak "CN 1/16 S 23 483 BT" which bears N80 1/4°E 6.15 feet; a 13" Douglas fir "CN 1/16 S 23 483 BT" which bears S53°W 25.96 feet.