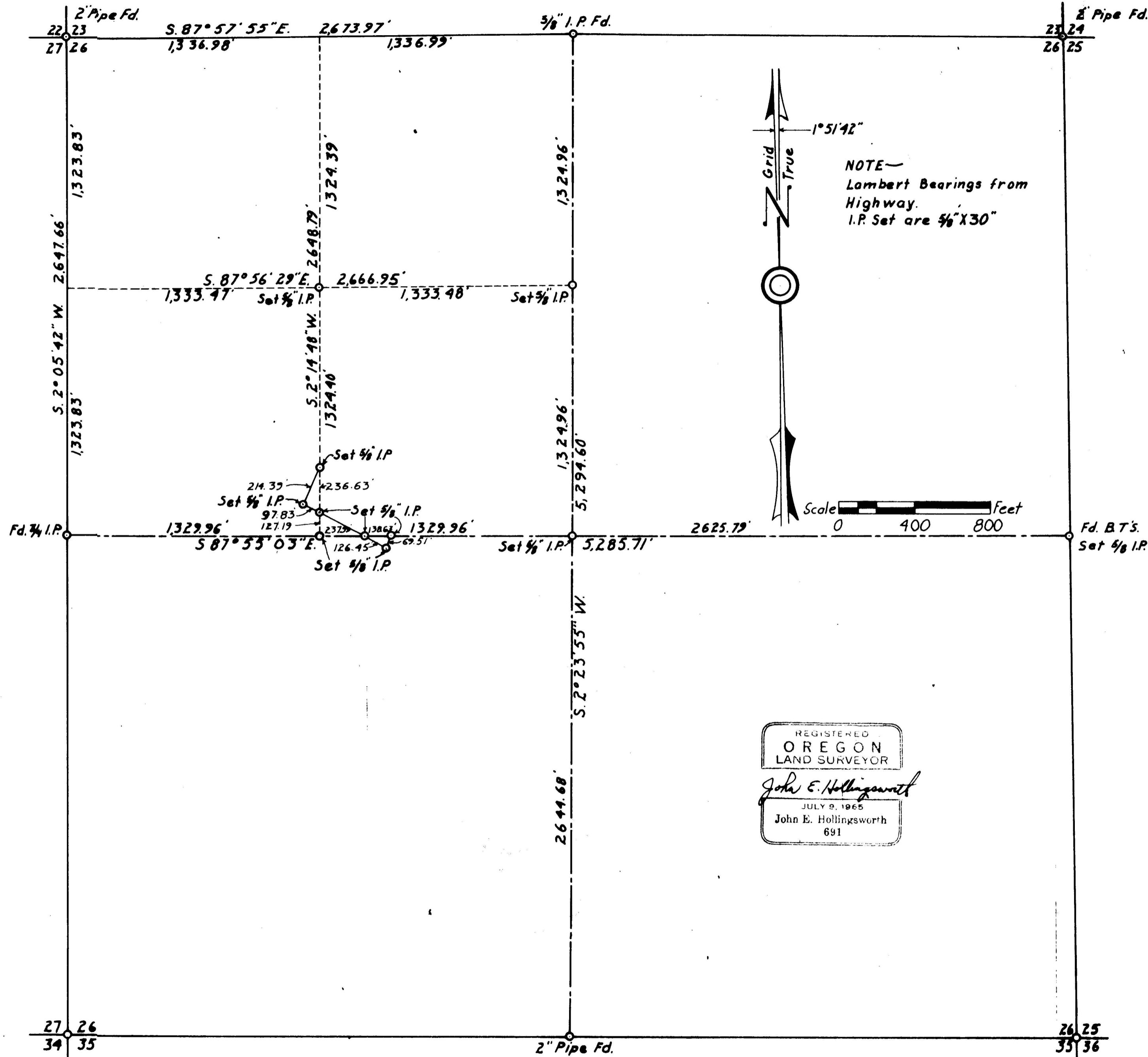


SUBDIVISION SECTION 26 T.36S.R.4W.W.M.
11-27-67

CORNER INFORMATION

Variation 20 1/2°



1/4 CORNER 23 and 26
1927 RESURVEY:
3" x 3" Squared post (found burned off at ground)
18" forked Oak S2° 15' E 164.0 ft. (Now 15" dead Oak, scribes "CS" visible - rest is covered)
RESTORED:
Set 5/8" x 30" iron pin 27" in ground along side of 3" post
Erected small mound of stone around pin.
18" pine bears S28° E 200.9 ft. scribed "1/4 S26BTRS691"
Only tree available
Ridge call to the East (435 ft.) fits good.

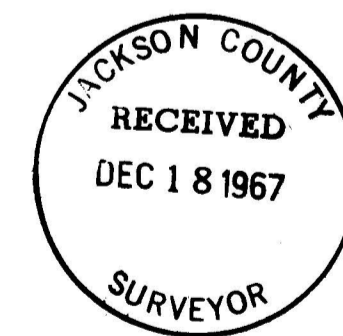
CENTER 1/4 CORNER
ESTABLISHED:
Set 5/8" x 30" iron pin 24" in ground
Erected mound of stone around pin
18" oak bears S25° W 39.3 ft. scribed "C 1/4 26 BT"
28" Oak stub bears S 69° E 11.0 ft. has old blazes on all 4 sides
Yellow corner tag on BT.

CENTER NORTH 1/16
ESTABLISHED:
Set 5/8" x 30" iron pin
Erected small mound of stone around pin.
28" fir bears N55° W 62.1 ft. scribed "RS 691"
18" Fir bears S 60 1/2° W 56.5 ft. scribed "CN 1/16 BT"
Yellow corner tag on 28" BT

NORTHWEST 1/16
ESTABLISHED:
Set 5/8" x 30" iron pin
Erected mound of stone around pin
26" pine bears S 48 1/2° W 109.4 ft. scribed "NW 1/16 S 26 BT"
28" Pine bears N 44° W 90.5 ft. scribed "NW 1/16 S 26 BT"
Yellow corner tag on 18" Oak N 19° E 65.5 ft.

CENTER WEST 1/16
ESTABLISHED:
Set 5/8" x 30" iron pin
36" Oak bears N 82° E 88.7 ft. scribed "CW 1/16 26 BT"

1/4 CORNER 25 and 26
RESTORED:
Set 5/8" x 30" iron Pin from 1927 BT's which are:
36" black oak bears N 26° W 264.0 ft.
42" white oak stump bears S 3° W 240.6 ft.
Set 4" x 4" x 48" white post near pin



3599

3599

