

Butte Falls, Oregon
November 28, 1967

(1)

SUBJECT: To monument and subdivide Section 21, T. 35S, R2E, Willamette Meridian.

Began survey 6-67.
 Found following corner evidence;
 16/15 NE, NW
 21/22 original BT, pipe & BTs RS 461
 E 1/4 corner- no original evidence.
 21/22 NW, poss. SW, SE
 28/27 original BTs, US Brass Cap & BTs (1965)
 S 1/4 corner- post, 2 original BTs
 20/21
 29/28 original NE, SW BTs
 E 1/4 corner- NW original BT
 17/16
 20/21 original SW BT, NW BT stump
 NW 1/4 corner- NE BT, SW BT stump

8-67 Cadastrals set and remonumented following corners;
 16/15 21/22 20/21 17/16
 21/22, E 1/4, S1/16 21/22, 28/27, S 1/4, 29/28, S 1/16 20/21, W 1/4, 20/21,
 16
 N 1/4, E 1/16 21, C 1/4, CS 1/16.

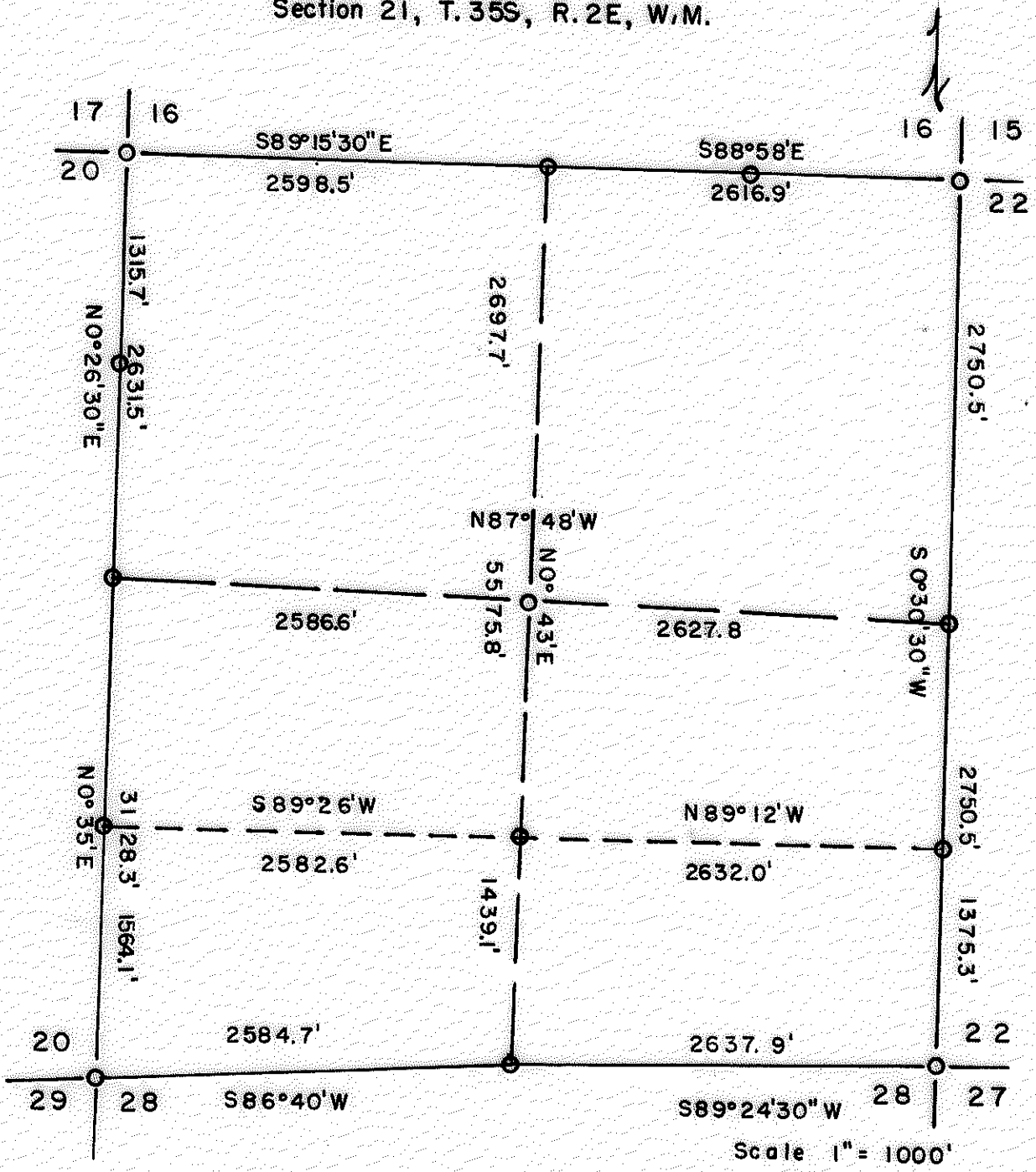
Began closed traverse transit and chain survey (solar bearings) at NE section corner section 21, T35S, R2E, NM, ran South, West, North, East to section corners and back to beginning.

EAST LINE: True bearing S0°30'30"W.
 0.0 feet 16/15
 2750.5 " 21/22 pipe (US Brass cap) same
 set new 1/4 21/22 midway on line, 5/8"x3' rebar Al. cap
 scribed RS 461 BT
 13" D. Fir S86°W 19.9' S21 (US Brass cap)
 15" " S73°E 22.9' S22 (same)
 4125.8 " set S 1/16 21/22 mid-point 5/8"x3' rebar Al. cap
 scribed RS 461 BT (US Brass cap)
 13" W. Fir S50°W 17.5' S21 (same)
 12" Cedar N54°E 10.6' S22
 5501.0 " 21/22
 28/27 orig. BTs, Br. cap (1965)

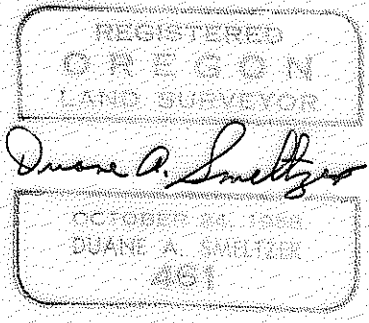
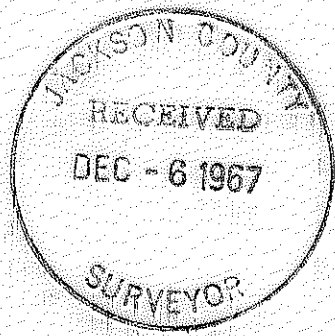
SOUTH LINE: True bearing S89°24'30"W.
 0.0 feet 21/22
 2637.9 " 28/27
 S 1/4 corner orig. BTs (US Brass cap same)
 True bearing S86°40'W.
 0.0 " S 1/4 corner
 2584.7 " 20/21
 29/28 orig. Bts (US Brass cap same)

WEST LINE: True bearing N0°35'E.
 0.0 " 20/21
 29/28
 1564.1 " S 1/16 20/21 US Brass cap & BTs
 3128.3 " W 1/4 corner orig. BT (US Brass cap same)
 True bearing N0°26'30" E.

Section 21, T. 35S, R. 2E, W.M.



Scale 1" = 1000'
11 - 67



S.21, T35S, R2E, WM.

WEST LINE cont. True bearing, $W\frac{1}{2}$ cor. North- $N0^{\circ}26'30''E.$

0.0 feet $W\frac{1}{2}$ corner
 1315.7 " set N 1/16 20/21 $5/8$ "x3' rebar Al. cap
 scribed RS 461 BT
 6" D. Fir $S31^{\circ}E$ 5.5' S21
 12" " $N19^{\circ}W$ 41.0' S20

2631.5 " $17/16$
 20/21 orig. BTs SW, NW stump. (US Brass cap same)

NORTH LINE: True bearing, $S89^{\circ}15'30''E$

0.0 " $17/16$
 20/21 (US Brass cap same)

2598.5 " $N\frac{1}{4}$ corner 2 orig. BTS
 True bearing $S88^{\circ}58''E.$

0.0 " $N\frac{1}{4}$ corner (US Brass cap)
 1308.5 " E 1/16 16
 21

2616.9 " $16/15$
 21/22 pipe

NORTH-SOUTH center line; calculated- $N0^{\circ}43''E.$

0.0 " $S\frac{1}{2}$ cor. (US Brass cap)
 1439.11 " CS 1/16 (")
 2878.1 " $C\frac{1}{2}$ cor.
 5575.8 " $N\frac{1}{2}$ cor.

EAST-WEST center line; calculated- $N87^{\circ}48''W.$

0.0 " $E\frac{1}{2}$ cor.
 2627.8 " $C\frac{1}{2}$ cor.
 5214.4 " $W\frac{1}{2}$ cor.

EAST-WEST center line, south one-half section.

0.0 " True bearing $N89^{\circ}12''W$
 S 1/16 21/22
 2632.0 " CS 1/16
 True bearing $S89^{\circ}26''W$
 0.0 " CS 1/16
 2582.6 " S 1/16 20/21

