

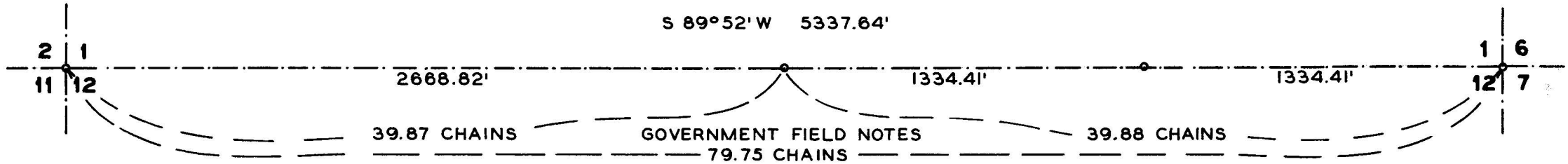
3535

SECTION CORNER
FOUND 2" IRON PIPE
6" ABOVE GROUND
IN MOUND OF STONE

1|4 CORNER
SET 2" IRON PIPE
8" ABOVE GROUND
B. OAK 8" S 05° W 23.45'
Y. PINE 16" N 05° E 2.65'

E. 1|16 CORNER
SET 2" IRON PIPE
6" ABOVE GROUND
B. OAK 12" S 32° E 28.43'
B. OAK 18" N 75° E 73.74'

SECTION CORNER
SET 2" IRON PIPE
6" ABOVE GROUND
Y. PINE 12" N 75° 30' E 15.5'
Y. PINE 8" S 24° E 30.4'
Y. PINE 10" S 42° 30' W 15.7'
FIR 10" N 44° W 40.2'



NOTE

RECORD BEARING OF SECTION LINE SHOWN
AS INDICATED IN GOVERNMENT FIELD NOTES.

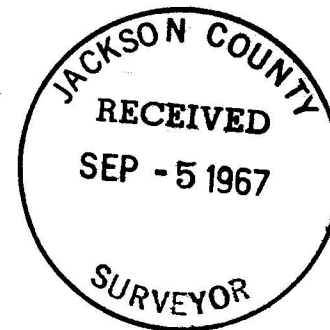
SURVEY

OF

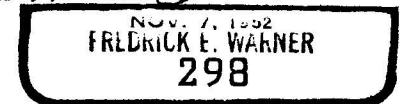
SECTION LINE BETWEEN SECTIONS 1 AND 12,
TOWNSHIP 37 SOUTH, RANGE 4 WEST, WILLAMETTE MERIDIAN,
JACKSON COUNTY, OREGON

FOR

EDWARD R. PREFONTAINE
ROUTE 1, BOX 350 F
GOLD HILL, OREGON



Fredrick E. Warner



SCALE: 1" = 500'

JUNE 27, 1967

3535

NO. 1267

Survey Narrative to comply with Section 1. ORS 209.250Oregon Laws 1963Survey Location

Section line between Sections 1 and 12, Township 37 South, Range 4 West of the Willamette Meridian, Jackson County, Oregon.

Survey For

Edward R. Prefontaine, Route 1, Box 350 F,
Gold Hill, Oregon.

Survey Purpose

To locate the East One Sixteenth Corner on the South Boundary of Section 1.

Survey Procedure

The Corner to Sections 1,2,11,12 is monumented with a two inch iron pipe, six inches above ground, in mound of stone with 4 inch by 4 inch post. This corner being firmly set, verified by residents as the corner, and conformity with deed records, I accepted as the true corner; thence I run East 5337.64 feet and thence North 12.44 feet and set a two inch iron pipe, 6 inches above ground for Corner to Sections 1,6,7,12 from which (Original Bearing Trees)
A black oak (dead and down) bears N.77° W., 15.18 feet dist.
A black oak (stump hole) bears N.35° E., 23.10 feet dist.
A black oak (dead with partial scribe visible) bears S.37° E., 19.80 feet dist.
A black oak (stump hole) bears S.60° W., 26.40 feet dist.
New bearing trees scribed as shown on my survey map accompanying this narrative; thence I run S. 89° 52' W. on original record bearing 1334.41 feet and set a two inch iron pipe, 6 inches above ground for East One Sixteenth Corner and scribed bearing trees as shown on my survey map accompanying this narrative; thence continuing S. 89°52'W. on original record bearing 1334.41 feet and set a two inch iron pipe, 8 inches above ground for the One Quarter Corner between Sections 1 and 12, scribed trees as shown on my survey map accompanying this narrative; thence continuing S.89°52'W. on original record bearing 2668.82 feet to the Corner to Sections 1,2,11, and 12.

Survey Completed

June 27, 1967 by Fredrick E. Warner, Ronald W. Cogswell, Arthur N. Zibolski and Charles G. Cook. This survey was executed with a Keuffel & Esser Transit and 200 foot steel tape in good condition at the time of the survey.

