

SURVEY FOR DON KLINGLE

EAGLE POINT MEADOWS

E. 1/2 Sec. 34, T. 35 S., R. 1 W., W.M.

Jackson County, Oregon

July 8, 1967

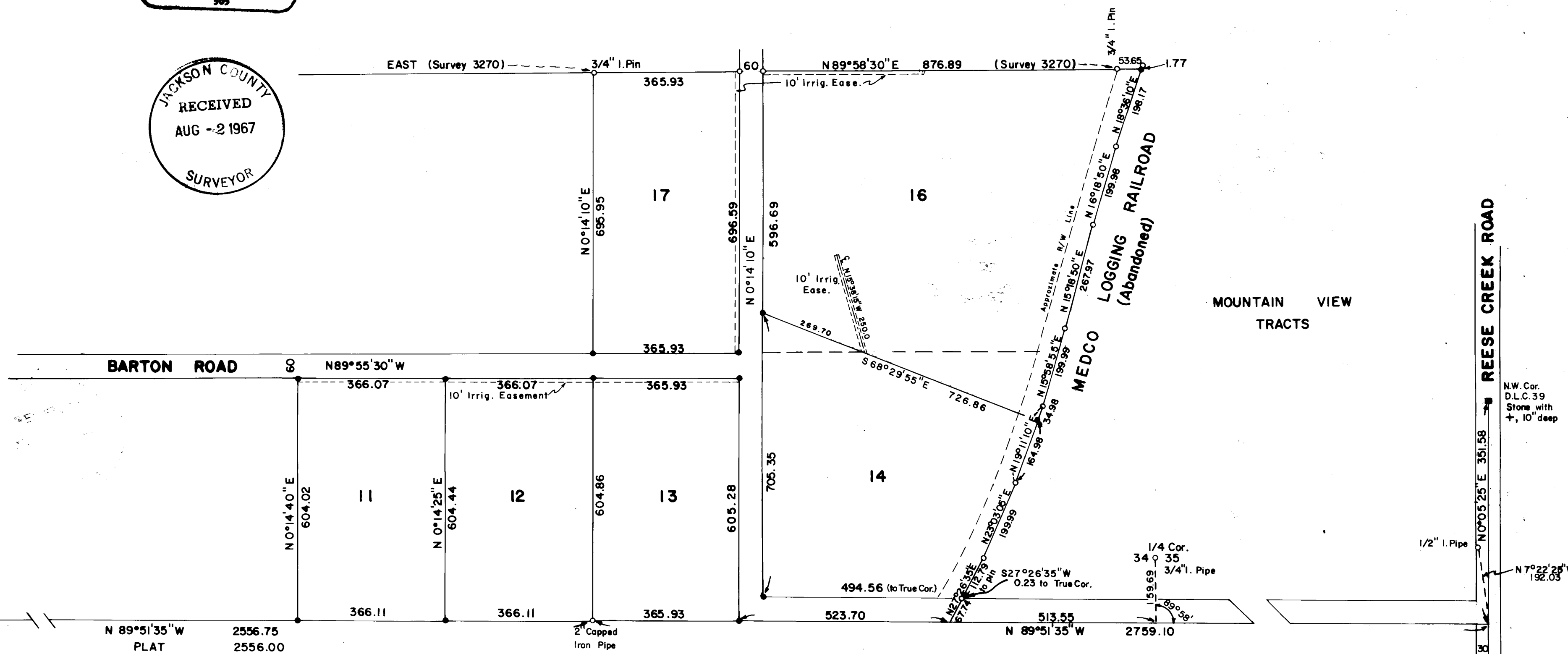
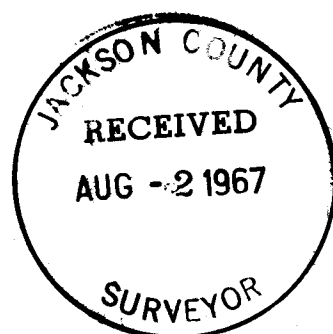
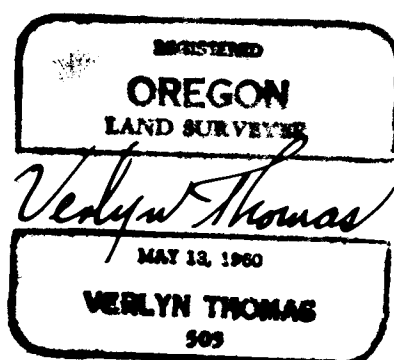
Verlyn Thomas: Professional Land Surveyor, Talent, Oregon

SCALE: 1" = 200'

LEGEND

- 5/8" I. Pin Found (unless otherwise noted)
- 5/8" I. Pin Set

BASIS OF BEARINGS: Recorded Survey No. 3270



STATE HIGHWAY 62
N.W. Cor. D.L.C. 40
1 1/2" I. Pipe 6" deep

N.W. Cor. D.L.C. 39 Stone with +, 10" deep
1/2" I. Pipe
N 7°22'25"W 192.03
S.W. Cor. D.L.C. 39
1 1/2" I. Pipe

SURVEY NARRATIVE TO COMPLY WITH O.R.S. 209.250
 REVISED BY CHAPTER 555, O.L. 1963

FOR: Don Klingle
 Butte Falls Star Route, Box 31
 Eagle Point, Oregon

PURPOSE: To resurvey Lots 11,12,13,14,16, and 17 of EAGLE POINT MEADOWS
 Subdivision, and monument additional survey lines as directed by client.

PROCEDURE: The south line of the Subdivision was established between the northwest corner of D.L.C. 40, and the 2" capped pipe at the southwest corner of Lot 13, and this line projected easterly to intersect the west line of D.L.C. 39. This point of intersection falls at the Reese Creek Road crossing of the Eagle Point Irrigation District Canal. It was felt there was virtually no possibility of any old monument remaining at this location, therefor no excavation was made in an attempt to find one. It should be noted that this theoretical location for the northeast corner of D.L.C. 40 measures 351.58 feet from the stone monumenting the Northwest corner of D.L.C. 39, whereas the original record is recorded as 344.52 feet.

Since the survey tie to the $\frac{1}{4}$ Corner between Sections 34 and 35 corresponds fairly closely to the original Plat of EAGLE POINT MEADOWS, it was concluded that the South line of said Subdivision, produced easterly from the aforementioned monuments will very closely reestablish the original location of the South line.

The location for the approximate center-line of the abandoned MEDCO Logging Railroad was found to have been monumented with $\frac{5}{8}$ " iron pins by L.E. Ager, Licensed Surveyor, on or about July 7, 1967, in a survey unrecorded as of this date. This monumented line was accepted as a division boundary along the abandoned railroad right-of-way. Survey monuments set in Recorded Survey Nos. 3270 and 567 were used in establishing the north boundary of Lots 16 and 17, and pro-rate data computed from measurements made thereto.

$\frac{5}{8}$ " iron pins were set as shown on the accompanying Plat.

