

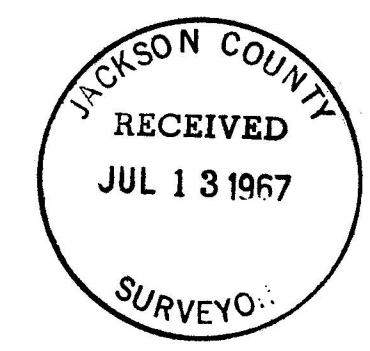
SURVEY IN THE SE 1/4 NW 1/4 SECTION 16  
T.34S., R.1W., W.M., JACKSON COUNTY, OREGON

FOR  
SHELDON JACK

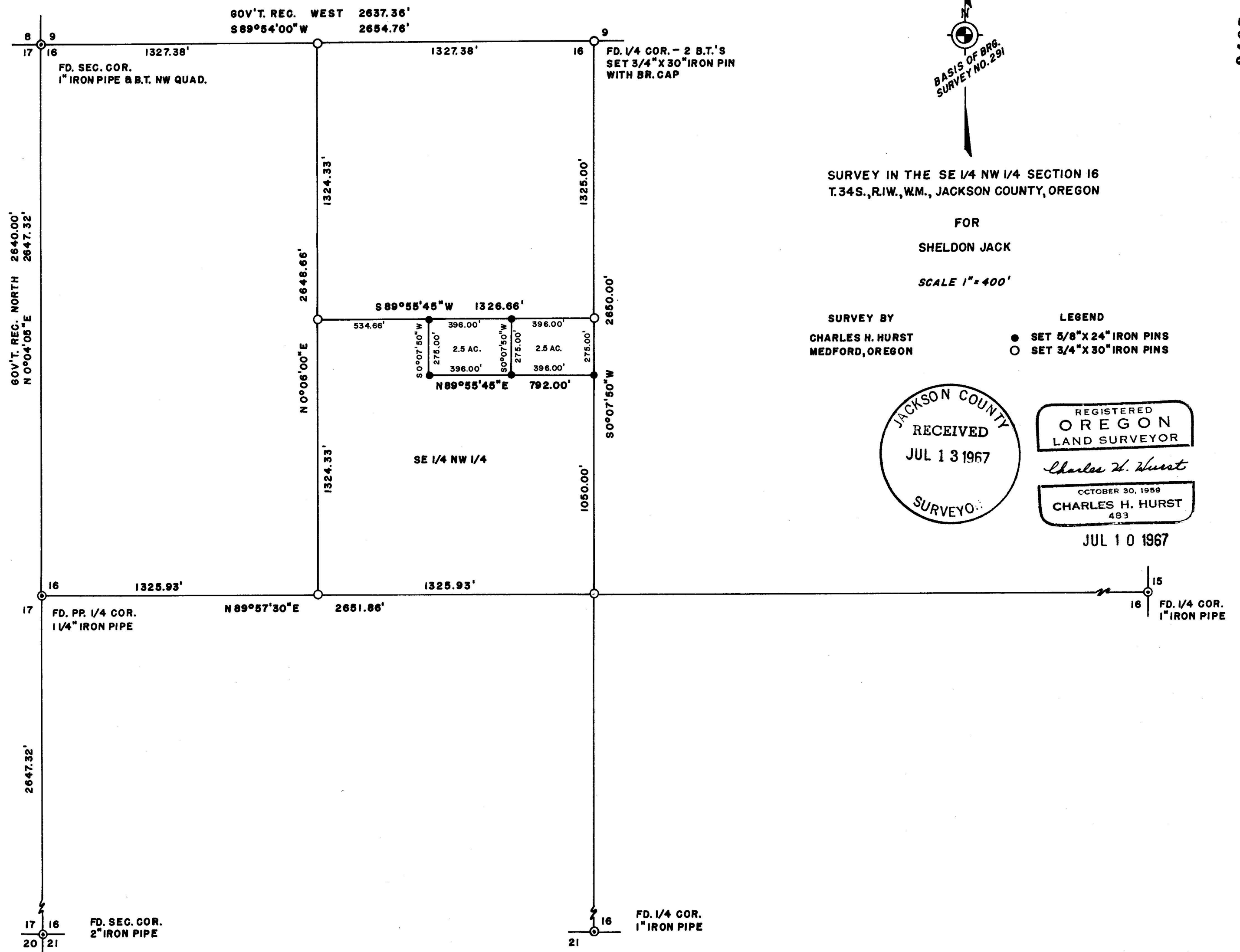
SCALE 1" = 400'

SURVEY BY  
CHARLES H. HURST  
MEDFORD, OREGON

LEGEND  
● SET 5/8" X 24" IRON PINS  
○ SET 3/4" X 30" IRON PINS



JUL 10 1967



Survey for Sheldon Jack  
Route 1, Box 502  
Eagle Point, Oregon

Survey by Charles H. Hurst, L.S.  
765 Sunrise Avenue  
Medford, Oregon

Bearing Based on the meridian of recorded survey No. 291

Purpose The separation of the two tracts shown from the SE $\frac{1}{4}$ NW $\frac{1}{4}$   
Section 16, T. 34 S., R. 1 W., W.M.

## PROCEDURE

The subdivision of Section 16 to define the boundary of the SE $\frac{1}{4}$ NW $\frac{1}{4}$ . Witness tree data is as follows:

1/4 corner common to Sections 9 and 16:

Found a 19" White oak which bears N67°30'E 21.12 feet with scribing intact and a 34" White oak which bears S50°40'W 58.74 feet from a brass capped 3/4"x30" iron pin which I set for the corner on the basis of the above evidence.

Section corner common to Sections 8, 9, 16 & 17:

Found a 1" iron pipe firmly set in a mound of rocks from which a White oak bears N59°30'W 43.5 feet with butt face chopped out and top face unopened; also a stump hole which bears S56°30'E 38.8 feet with a dead oak on the ground alongside with faces opened and rotted out.

Proportionate 1/4 corner common to Sections 16 and 17:

Found a 1 1/4" iron pipe firmly set in a mound of rocks in a large field. This corner was accepted when found to check a proportionate falling, no evidence of the original corner being found. From said corner, I scribed a 28.4" Black oak "1/4 S17 482BT" which bears N2°08'W 324.06 feet; a 18.5" Ponderosa pine "1/4 S17 483BT" which bears S66°49'W 375.20 feet.

West 1/16 corner common to Sections 9 and 16:

Set a 3/4"x30" iron pin for corner from which I scribed a 15" Douglas fir "WL/16 S9 483BT" which bears N83°W 42.55 feet; a 9.5" White oak "WL/16 S9 483BT" which bears N84°45'E 51.74 feet.

Center-north 1/16 corner Section 16:

Set a 3/4"x30" iron pin for corner from which I scribed a 23.5" White oak "CN1/16 S16 483BT" which bears N17°30'E 10.15 feet; a three forked 16.5" White oak "CN1/16 S16 483BT" which bears N21°30'W 65.50 feet.

Northwest 1/16 corner Section 16:

Set a 3/4"x30" iron pin for corner from which I scribed a 14.7" Black oak "NWL/16 S16 483BT" which bears N28°20'W 82.55 feet; a twin forked 13" Black oak "NWL/16 S16 483BT" which bears S60°15'E 47.05 feet.

Center 1/4 corner Section 16:

Set a 3/4"x30" iron pin for corner from which I scribed a 9" White oak "C1/4 S16 483BT" which bears N68°45'E 29.67 feet; a 8.6" White oak "C1/4 S16 483BT" which bears N79°W 27.27 feet.

Center-west 1/16 corner Section 16:

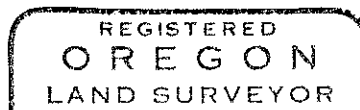
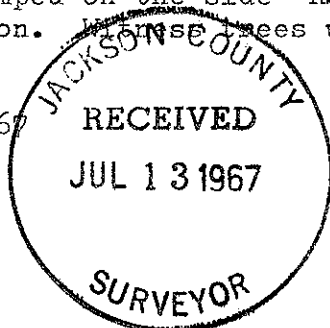
Set a 3/4"x30" iron pin for corner from which I scribed a 22" White oak "CW 1/16 S16 483BT" which bears N84°E 43.76 feet; a 18" White oak "CW 1/16 S16 483BT" which bears S37°20'E 30.53 feet.

Section corner common to Sections 16, 17, 20 & 21:

Found a 2" iron pipe for corner at the east end of a wooden cattleguard from which an original witness tree bears in the northwest quadrant and a county surveyor witness tree bears in the southeast quadrant.

All 1/16 corner pins are stamped on the side "RS 483" in addition to the appropriate corner designation. Witness trees were measured to the scribed face.

Survey completed July 10, 1967



*Charles H. Hurst*

