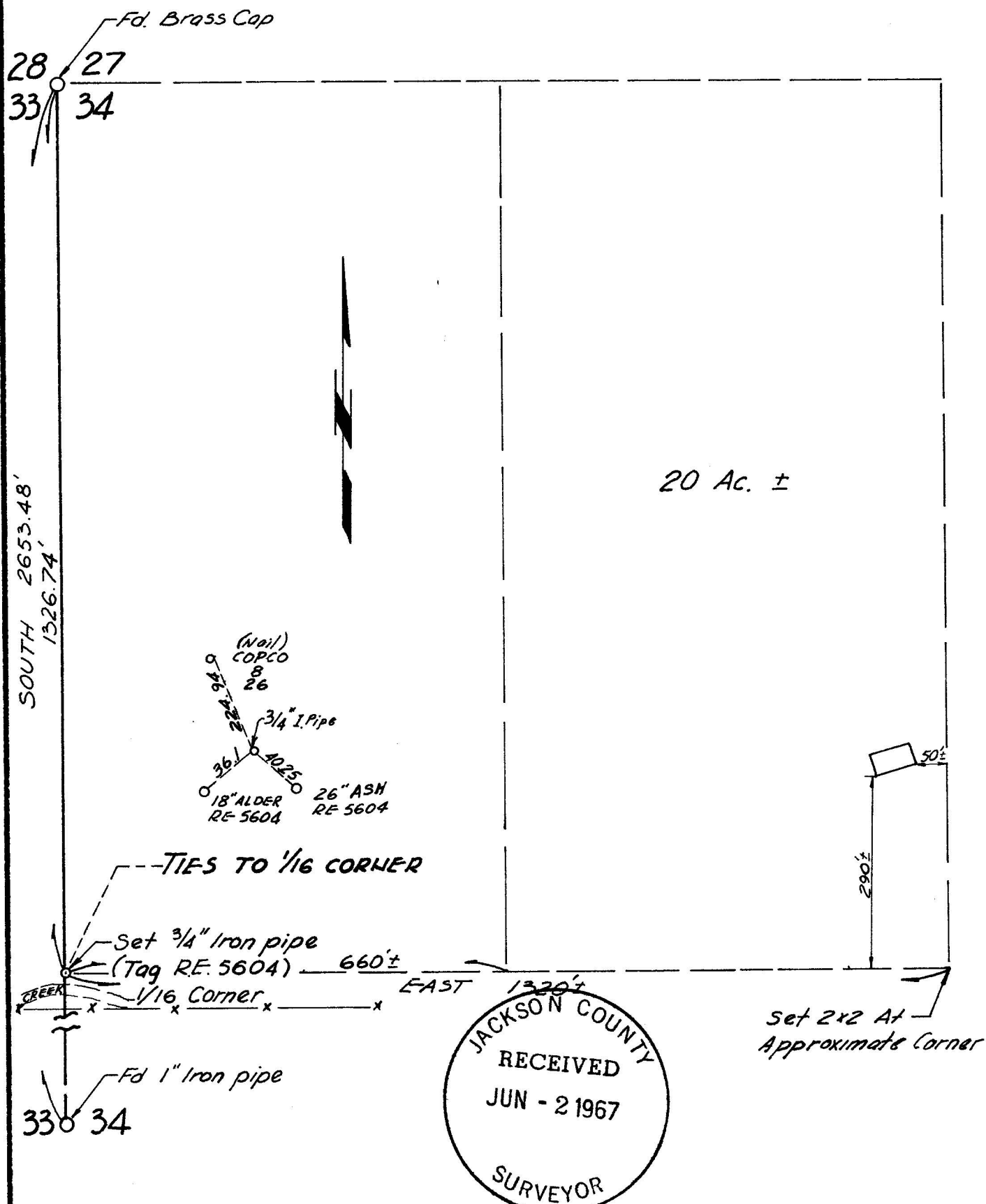


# SURVEY IN THE NW 1/4 OF THE NW 1/4 SEC. 34 T. 34 S., R 4 W., W.M., JACKSON COUNTY, ORE.



I HEREBY CERTIFY THAT THE SURVEY REPRESENTED BY THIS PLAT WAS EXECUTED IN CONFORMANCE WITH THE LAWS OF THE STATE OF OREGON.

PREPARED FOR:  
MR. RAY ZWAN  
224 SW WESTERN AVE.  
GRANTS PASS, ORE.

Bryce W. Townley 4-5-67  
BRYCE W. TOWNLEY  
P.O. BOX 339  
ROGUE RIVER, OREGON

SCALE 1"=200'

W.O. 67-14

SURVEY NARRATIVE TO COMPLY WITH PAR. 209.250, O.R.S.

Survey for: Mr. Ray Zwan  
224 SW Western Avenue  
Grants Pass, Oregon

Purpose: To set 1/16<sup>th</sup> corner along the West line of the NW 1/4 of Section 34, and to run an East line from there to determine if the location for a new home would fall within the east half of the NW 1/4 of the NW 1/4 of said Section 34.

It was agreed that the measurements east from the Section line would be approximate only (stadia).

Location: The NW 1/4 of the NW 1/4 of Section 34, T. 34 S., R. 4 W., Willamette Meridian, Jackson County, Ore.

Procedure: I located the brass cap section corner (27, 28, 33, 34,) from existing well marked bearing trees. The apparent 1/4 corner is a 1" G.I.P. with a wooden post adjacent marked 1/4 corner. (Set by Tom Pierce) I set up over the pipe and found the two bearing trees set by Tom Pierce.

1. 14" Douglas Fir N46° 59' W 28.7'
2. 16" Cedar N 31° 28' E 44.7'
3. Also found what could be an original bearing tree. A 36" Black Oak N 83° E 71.8', no scribe visible, however a scar was visible along side of a large saw cut where the scribe should have been. The original call to this tree (if this was the tree) was N 53° E 96 links.

From a point approximately midway between the Section corner and the 1/4 corner, I was able to "wiggle in", and see both points on line. I set the 1/16<sup>th</sup> corner on line at the proportionate distance.

I then ran a line at right angles to the West line of the NW 1/4, due East to determine the location of the existing home. (Measurements were by stadia).

The owner understands that when the entire Section is surveyed and subdivided it will be necessary to adjust the location of the temporary hubs set as shown on the map.

Measurements along the Section line were made with a 200' pioneer tape corrected for temperature and sag.

