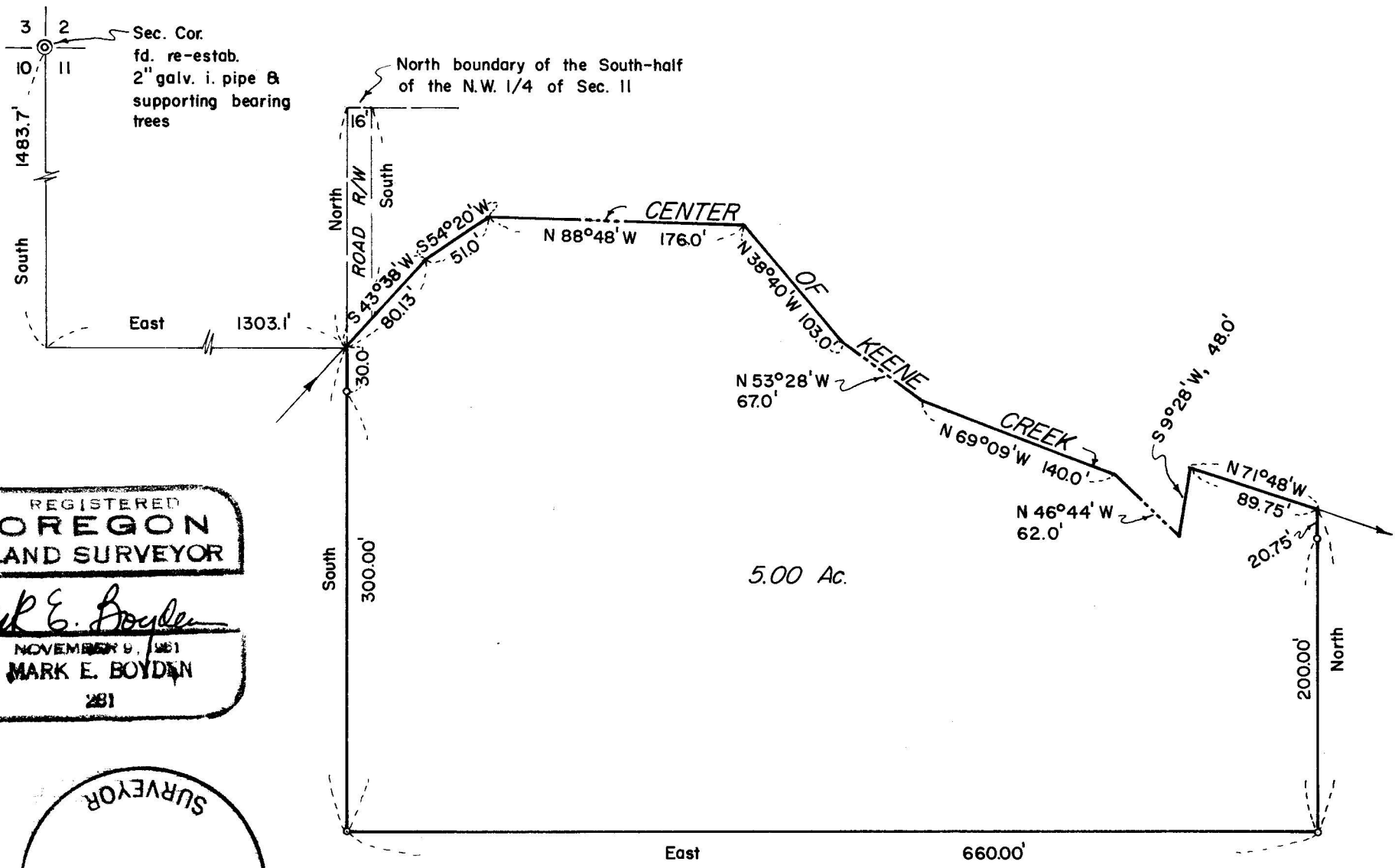


3444

Survey For:
CASCADE RANCHES, INC.
Located in the
N.W. 1/4 of Sec. 11, T.40S.R.3E., W.M.
By: Mark E. Boyden
May 23, 1967



REGISTERED
OREGON
 LAND SURVEYOR

Mark E. Boyden

NOVEMBER 9, 1961
MARK E. BOYDEN
 281

JACKSON COUNTY
 RECEIVED
 MAY 25 1967
 SURVEYOR

SCALE: 1" = 100'

o set 5/8" X 24" iron pin

Basis of Bearings:
Mean of 4 solar observations

3444

This corner monument having been previously accepted by the State of Oregon on Recorded Survey No. 637, and no evidence of said monument having been disturbed, I accept this monument as the true corner.

From said corner, a random traverse was run to and around the subject parcel, using a 200-foot steel tape and a 20" Dietzgen transit.

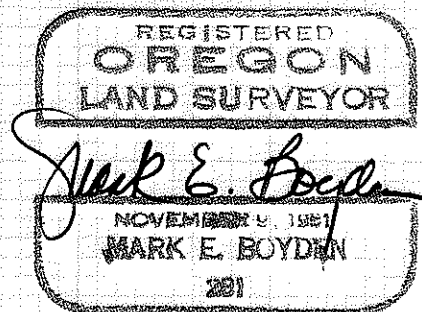
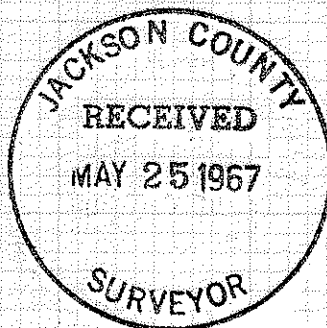
The closure around said parcel developed an error of 1/20,000 with an angular closure of 0° 00' 30".

This error was then adjusted, the true corner locations computed, and then monumented from the random hubs.

Meridian was determined from a solar observation taken approximately 500' Southerly from said Section corner, using a Latitude of 42° 06' 40", with two direct and two indirect observations. The total computed bearing split of the four observations developed was 0° 03' 30", which was averaged for bearing control.

Monumented the tract as shown on the attached map.

May 23, 1967



SURVEY NARRATIVE TO COMPLY WITH O.R.S. 209.250

FOR: Cascade Ranches, Incorporated
c/o Patrick Ford, Attorney
711 East Main Street
Medford, Oregon

PURPOSE To monument and describe a parcel of land in the South half of the Northwest Quarter of Section 11, Township 40 South, Range 3 East, Willamette Meridian to supercede the tract described in Deed Volume 199, Page 325.

In order that Cascade Ranches, the owners of the remaining portion of the South half of the North half of said Section 11 can establish definite boundaries around the Wilkinson tract (Deed Volume 199, Page 325), it is proposed that Wilkinson deed said tract described in Deed Volume 199, Page 325 to Cascade Ranches, Incorporated. Then Cascade Ranches, Incorporated will convey to Wilkinson the parcel as described by this survey.

PROCEDURE: Began the survey at the corner common to Sections 2, 3, 10 and 11, Township 40 South, Range 3 East, Willamette Meridian, previously re-established by Deputy County Surveyor C. Z. Boyden on December 10, 1936. The 2" galvanized iron pipe corner monument was found, firmly set, from which:

The original bearing tree (now a 22" Yellow Pine stump) bears North 57° East, 16.4 feet to the center of the tree (Record = North 60° East, 15.2 feet to the face of the tree);

The 18" White Fir tree (1936 re-establishment tree) now a 32" White Fir with healed blazes bears North 89-1/2° West, 18.1 feet to the center of the tree (Record = South 88-1/2° West, 17.6 feet to the face of the tree);

The 22" Douglas Fir tree (1936 re-establishment) now a 36" Douglas Fir with healed blazes bears South 52° 45' East, 72.9 feet to the center of the tree (Record = South 52° East, 72.5 feet to the face of the tree);

The 14" Cedar tree (1936 re-establishment tree) now a 23" Cedar, plainly scribed "CS-BT" bears North 8° West, 42.6 feet to the scribed face (Record = North 18° West, 43.0 feet to the face).

In that the Deputy County Surveyor had evidence of all four original bearing trees in 1936, the differences in bearings and distances can be attributable to the steep terrain, with an obvious error of 10° to the Northwest tree.