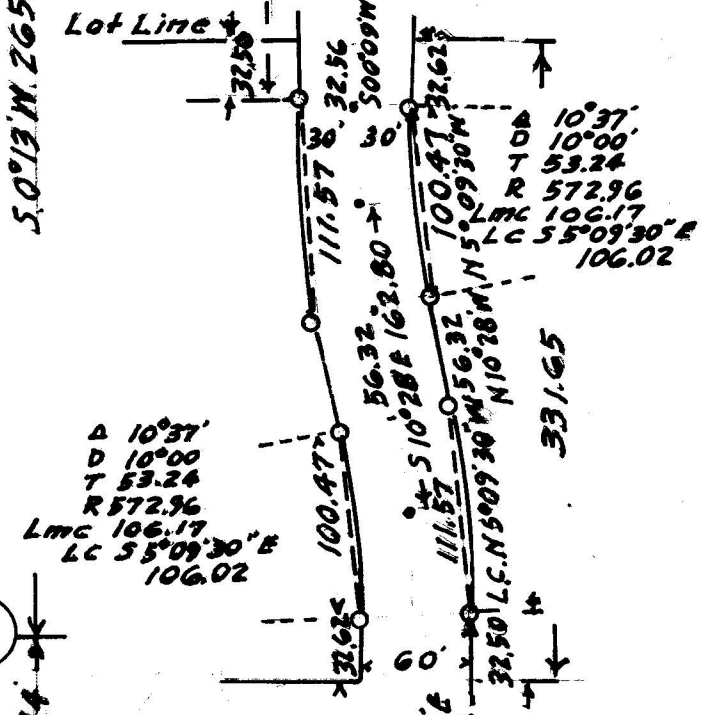
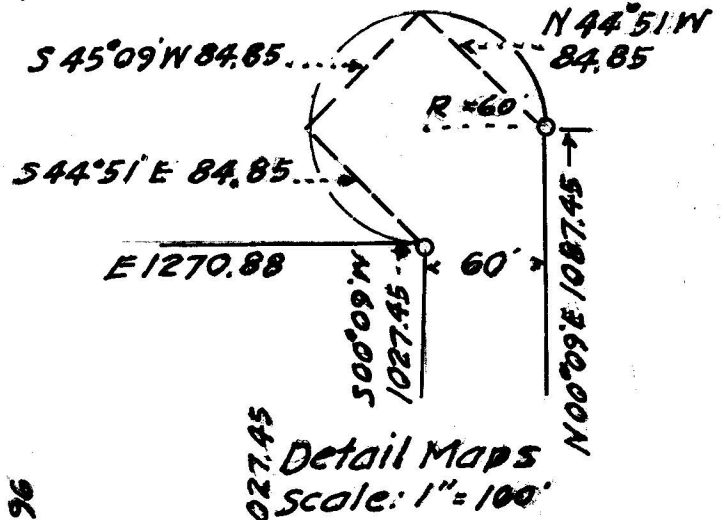
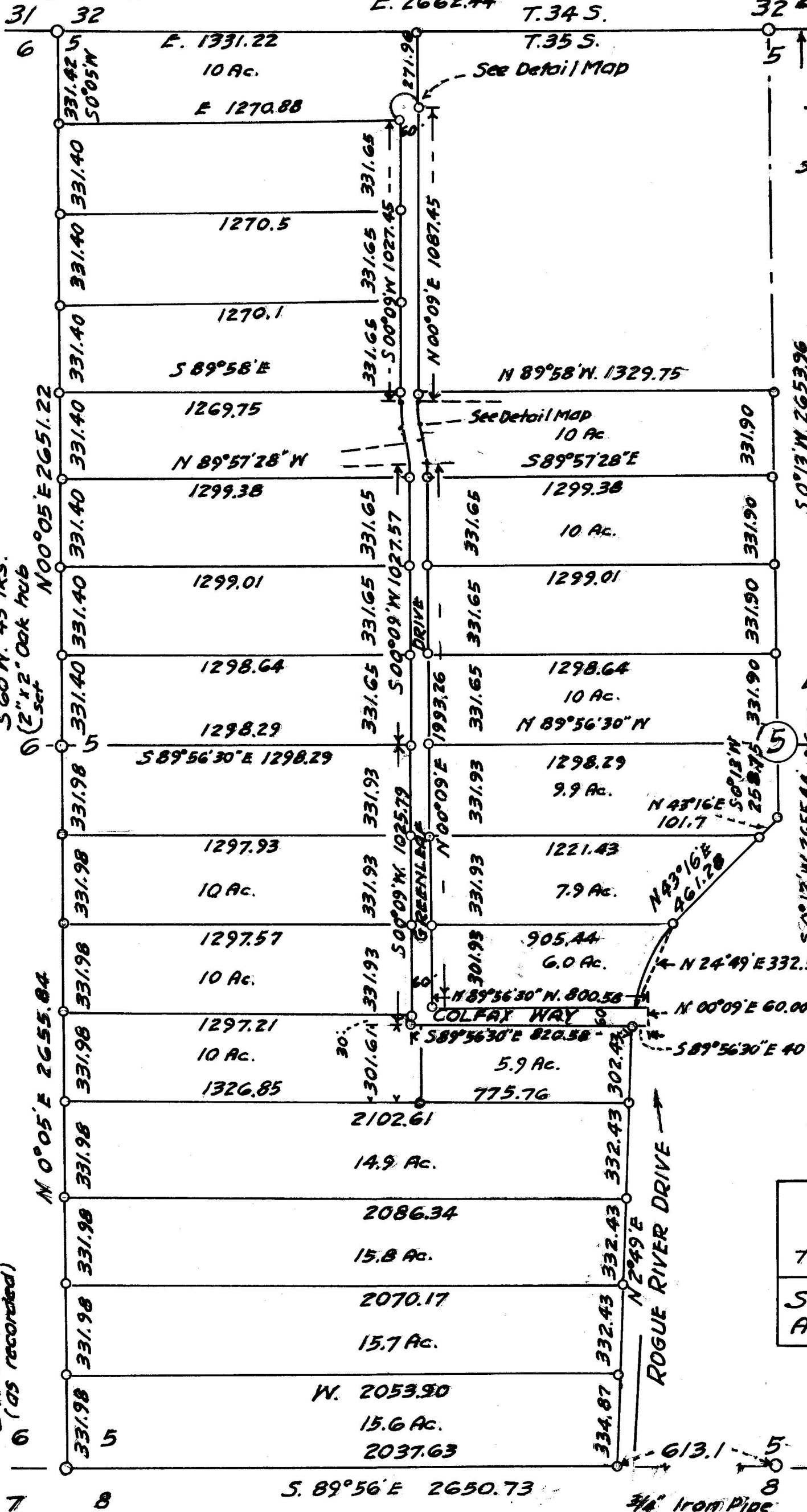


20" Oak S 83° W 35 lks.
 24" Pine N 50° W 8 lks. T. 35 S., R. 1 W., W. M.

24" B Oak S 8° E 37 lks
 Pine (scribe chopped out)
 Hub, with tack



FAYDREX, INC.
 in Section 5
 T. 35 S., R. 1 W., W. M. ORE.
 Scale: 1" = 400'
 Aug. 1964 Revised April 1966

REGISTERED PROFESSIONAL
 ENGINEER
 838
 Tom R. Pearce
 OREGON
 DEC. 31, 1919
 TOM R. PEARCE

CLATSOP COUNTY
 RECEIVED
 MAR 29 1967
 SURVEYOR

3392

3392

PURPOSE OF SURVEY:

To survey a tract of land lying in the West Half of Section 5, Township 35 South, Range 1 West of the Willamette Meridian, in Jackson County, Oregon and lying West of Rogue River Drive. To divide into 24 parcels.

PREVIOUS SURVEYS: See file No. 1435

Examination of Recorded Surveys, filed with Jackson County Surveyor, reveal that the corners found coincide with the Recorded Surveys, with the exception of the Southwest corner of Section 5, and the West one quarter corner of Section 5. At the Southwest corner there appeared to be a rusty 1 1/4 inch iron pipe. Later, it was found to be a 2 inch iron pipe and three witness trees were found. At the West one quarter corner of Section 5, the Pine stump hole bears South 60° West 43 links, instead of South 50° West 44 links.

RESURVEY IN SECTION 5.

PERT

The Quarter Corner between Sections 5 and 8, monumented with a 3/4 inch iron pipe, from which

A 38 inch White Oak bears S 26°30' W 125.7 feet
Remains of a Y. Pine S 15°00' E 120.8 feet

2650.73 Thence N 89°56' W on a true line between Sections 5 and 8 to the Section Corner common to Sections 5, 6, 7 and 8 which is monumented with a 2 inch iron pipe.

NOTE: At the time of this survey, the iron pipe was estimated to be 1 1/4 inch in diameter and no witness trees. It was later revealed to be a 2 inch iron pipe with 3 bearing trees. (See County Surveyor Records.)

2655.84 Thence N 0°05' E on a true line between Sections 5 and 6 Point for Quarter Corner between Sections 5 and 6.

A 18 inch Oak bears N 40° E, 34 lks.
A Pine stump hole bears S 60° W, 43 lks.

2651.22 Thence N 0°05' E on a true line between Sections 5 and 6 Point for Section Corner common to Sections 5, 6, 31 and 32 Set a 2 inch Oak Hub from which

A 20 inch Oak bears S 83° W, 35 lks.
A 24 inch Pine bears N 50° W, 8 lks.

2662.44 Thence East on a true line between Sections 32 and 5 Point for Quarter Corner common to Sections 32 and 5 Drove a hub from which

A 24 inch Black Oak bears S 8° E, 37 lks.
A pine, (scribe chopped out.)

2653.96 Thence S 0°13' W on true center line of Section 5 to the theoretical center of Section 5.

2655.44 Thence S 0°13' W on true center line of Section 5 Point for Quarter Corner between Sections 5 and 8, monumented with a 3/4 inch iron pipe.

Tom R. Pearce, Reg. Eng'r #338

REVISED NARRATIVE

Dependent Resurvey
See File No. 1435

IN

SECTION 5

Township 35 South, Range 1 West, Willamette Meridian
Jackson County, Oregon.

Executed at request of Faydrex, Inc.
1054 South Riverside
Medford, Oregon

By

Tom R. Pearce
Registered Engineer No. 838
Grants Pass, Oregon

Assistants:
Claude Masters, Transitman
Ellsworth Cook, Ch.
Jerry Linkhart, Ch.

Survey commenced, July 1, 1964
Survey completed, August 10, 1964
This Narrative, March 23, 1967

