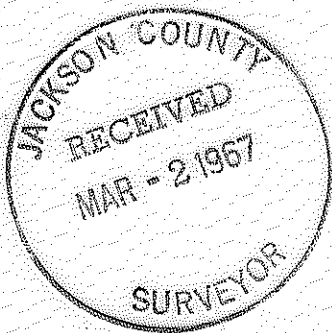
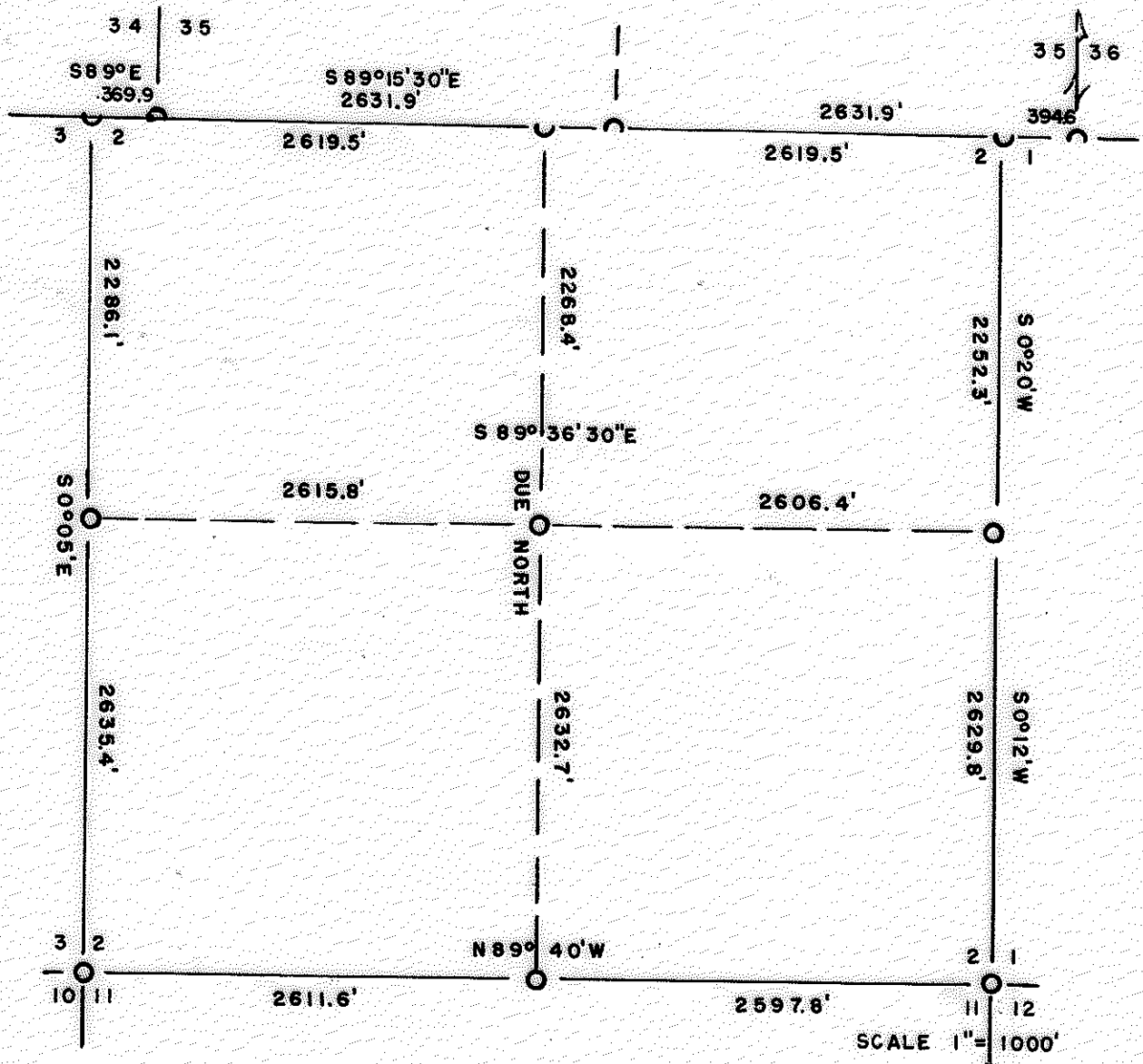


Section 2, T. 34 S., R. 2 E., W. M.



335

Butte Falls, Oregon
February 17, 1967

Jackson County Surveyor
Jackson County Courthouse
Medford, Oregon

Dear Sir;

Please record the following, pertaining to Public Lands Surveys.

SECTION 2, T. 34S, R. 2E. Willamette Meridian. Jackson County, Oregon.

OBJECT: To replace lost corners and subdivide section.

NARRATIVE: Found following original evidence;

North Line; $\frac{34}{34}$
 $\frac{G3/G2}{34/35}$ RS461 Al. Cap, BTs; CCstone and 2 BTs.
 $\frac{2}{35}$ stone, 2 BTs; 2 RS461 BTs
 No $N\frac{1}{2}$ corner or BTs.
 $\frac{35}{G2/G1}$ stone, SE BT OK, SW BT dead.
 $\frac{35/36}{1}$ stone, hacks. Possible BTs down rotted. Line blazes.

East Line; $E\frac{1}{2}$ corner, weathered stone, NW BT OK, SE BT top gone.
 $\frac{2/1}{11/12}$ stone, NE, SE, SW BTs OK.

South Line $S\frac{1}{2}$ corner stone and SW BT OK.
 $\frac{3/2}{10/11}$ stone, BTs OK

West Line; $W\frac{1}{2}$ corner, pipe and bts OK.

Bearings by Solar observation. Ran transit and chain traverse on N, E and S boundaries, tied to W line traverse run previously (RS461) S.3.

NORTH LINE: True bearing, $S89^{\circ}00'E$ to cor $\frac{34}{35}$
 0.0 feet $\frac{34}{2}$
 $\frac{G3/G2}{34/35}$ Al. cap 3.1' N. of CCstone.
 True bearing $S89^{\circ}15'30"E$ corner $\frac{34}{35}$ East to $\frac{35}{36}$
 369.9 " $\frac{34/35}{2}$ stone 2' 1
 2619.5 " $\frac{35}{\frac{1}{2} S2}$ set $5/8"x3'$ rebar, Al. cap
 scribed RS 461
 S2 14" W. Fir 20.2' $S24^{\circ}E$
 BT 10" " 20.7' $N63^{\circ}E$
 3001.8 " $\frac{1}{2} S 35$
 $\frac{2}{35}$ set $5/8"x3'$ rebar, Al. cap
 scribed RS 461
 S2 12" W. Fir 13.2' $S52^{\circ}W$
 BT
 RS 461
 $\frac{1}{4} S 35$ 13" Chinquapin Due N 1.7'
 BT
 5239.1 " $\frac{35}{G2/G1}$ set $5/8"x3'$ rebar, Al. cap 3.8' N. of orig.
 stone.
 scribed RS 461 BT
 S2 6" W. Fir 9.5' $S24^{\circ}W$
 orig. S1 BT 8" " 10.7' $S14^{\circ}E$
 5633.7 " $\frac{35/36}{1}$ stone.

(2) S. 2, T. 34S, R2E, W.M.

EAST LINE: True bearing, S0°20'W
 0.0 feet $\frac{35}{G2/G1}$ Al. cap
 2252.3 " $\frac{1}{4}$
 2/1 stone, BTs.
 True bearing, S0°12'W
 4882.1 " $\frac{2/1}{11/12}$ stone, BTs.

South LINE: True bearing, N89°40'W
 0.0 " $\frac{2/1}{11/12}$ corner.
 2597.8 " $\frac{1}{4}$ -2/11 stone, BT
 5209.4 " $\frac{3/2}{10/11}$ stone, BTs.

WEST LINE: from previous record, RS 461.
 True bearing, N°05'W
 0.0 " $\frac{3/2}{10/11}$
 2635.4 " $\frac{1}{4}$
 3/2 pipe, BTs
 4921.5 " $\frac{34}{3/2}$ CC AL. cap RS 461

SUBDIVISION: Began at $E\frac{1}{4}$ corner, ran West to $W\frac{1}{4}$ corner.
 " " $S\frac{1}{4}$ " " North " approx. $C\frac{1}{4}$ cor.,
 thence North to approx. $N\frac{1}{4}$ corner S2.
 Set $C\frac{1}{4}$ corner at intersection of lines between E-W and
 N-S $\frac{1}{4}$ corners. E-W center line True bearing N89°36'30"W,
 2606.4' to $C\frac{1}{4}$, thence 2615.8' to $W\frac{1}{4}$.
 N-S center line True bearing, Due North, 2632.7' to $C\frac{1}{4}$,
 thence 2268.4' to $N\frac{1}{4}$. RS 461-
 Set 5/8"x3' rebar and Al. cap. $C\frac{1}{4}$
 Scribed RS 461 S2
 $C\frac{1}{4}$
 S2 7" W. Fir S47°W 4.0'
 BT 7" " S4°E 12.6'
 10" " N24°W 32.4'
 20" " N16°E 14.8'

