

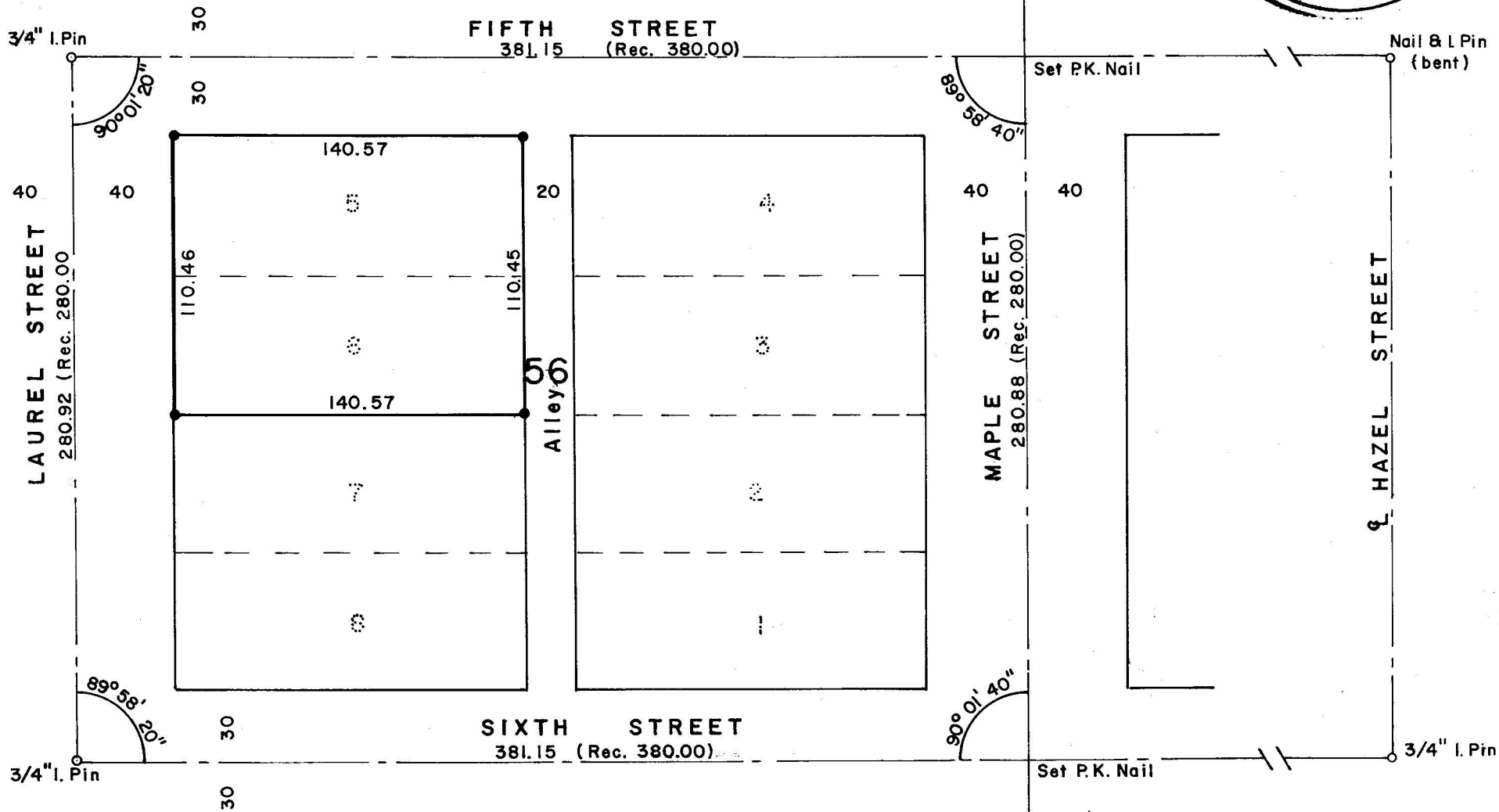
3326  
9288

**SURVEY FOR ROY RINNAN**  
Lots 5, 6 Block 56  
Original Town of Central Point  
Jackson County, Oregon

January 19, 1967  
SURVEY NO. 2356

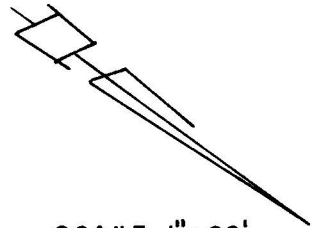
Verlyn Thomas:  
Professional Land Surveyor  
Talent, Oregon

B. Cap. Mon.  
at THIRD ST.

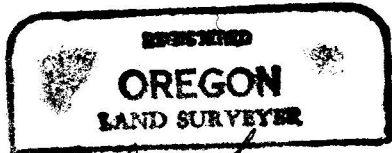


**LEGEND**

- Monument found
- 5/8 x 24" I. Pin set flush



SCALE 1" = 60'



*Verlyn Thomas*

MAY 12, 1960

VERLYN THOMAS

309

B. Cap. Mon.  
at SEVENTH ST.

3326

SURVEY NARRATIVE TO COMPLY WITH O.R.S. 209.250  
REVISED BY CHAPTER 555, O.L. 1963

FOR: Roy L. Rimman  
4163 Old Stage Road  
Central Point, Oregon.

PURPOSE: To survey and monument Lots 5 and 6, Block 56, Original Town of  
Central Point.

PROCEDURE: Determined center-line of Maple Street from Brass cap monuments at  
Third and Seventh Streets. Determined center-line of Fifth Street  
from  $\frac{3}{4}$ " iron pin at Laurel Street, and iron pin at Hazel Street.  
The iron pin at Hazel Street was found to be bent, but a nail was  
found in place at original location of top of pin. This nail used  
in establishing Fifth Street center-line. Determined center-line  
of Sixth Street from  $\frac{3}{4}$ " iron pin at Laurel Street, and  $\frac{3}{4}$ " iron pin  
at Hazel Street.

Set P.K. nails at center-line intersection of Maple Street with  
Fifth and Sixth Streets.

Survey results are as shown on the accompanying Plat.

