

REGISTERED  
OREGON  
LAND SURVEYOR

*Edward A. McGinty*

JULY 10, 1953  
EDWARD A. MCGINTY  
301

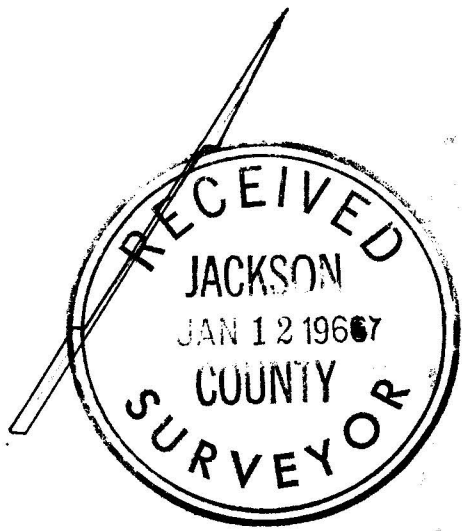
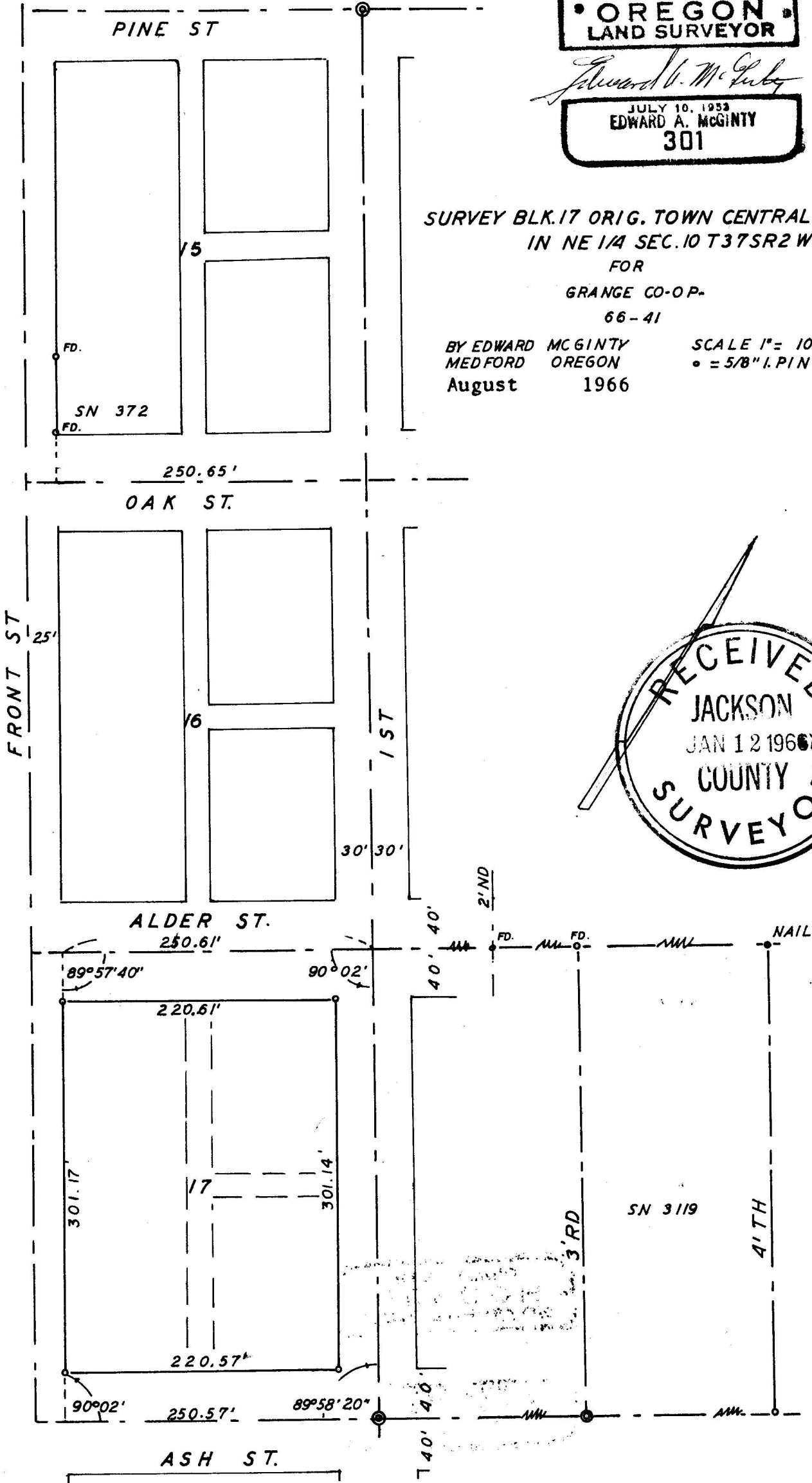
3316  
9188

SURVEY BLK.17 ORIG. TOWN CENTRAL POINT  
IN NE 1/4 SEC.10 T37SR2 W

FOR  
GRANGE CO-OP-  
66-41

BY EDWARD MCGINTY  
MEDFORD OREGON  
August 1966

SCALE 1" = 100'  
• = 5/8" I.P.I.N

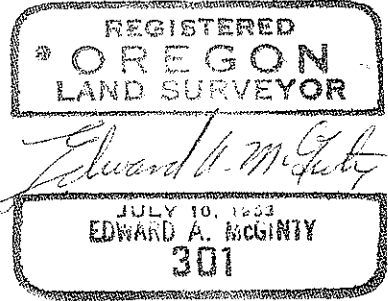


3316

Survey Narrative to comply with O. R. S. 209-250:

Survey for: Grange Co-op  
Central Point  
Oregon

Survey by: Edward A. McGinty, L.S.  
August 1966



PRECEDENCE OF SURVEY:

Center line of Ash Street was determined by projecting a line from monuments on Ash Street from 3rd. Street to 1st. Street. Said monuments being a brass disc in concrete set approximately flush with the pavement.

Center line of Alder Street was determined by projecting a line from a 5/8 inch iron pin, found flush with pavement at the intersections of 3rd. Street and 2nd. Street on Alder Street.

Center line of 1st. Street, monuments found at Pine Street and Ash Street on 1st. Street.

The Easterly line of Front Street was determined from Survey No. 372 and 578.

Monuments set being 5/8 x 24 inch iron pins, set approx. flush with surface.

