

Survey For:
 WHITE CITY CORPORATION
 Located in Lots 2-9, Blk. 6
 CASCADE VILLAGE, UNIT
 No. 2 (Recorded)
 Located in the S.E. 1/4 of
 Sec. 17 and the N.E. 1/4 of
 Sec. 20, T36SRIW, W.M.
 By: Mark E. Boyden
 Sept. 19, 1966

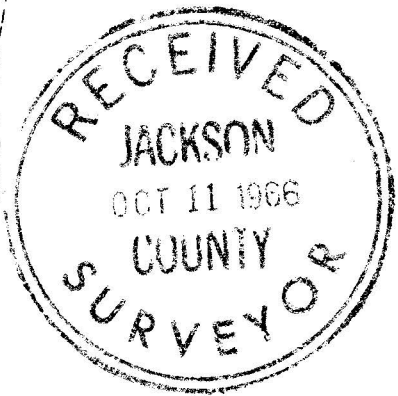
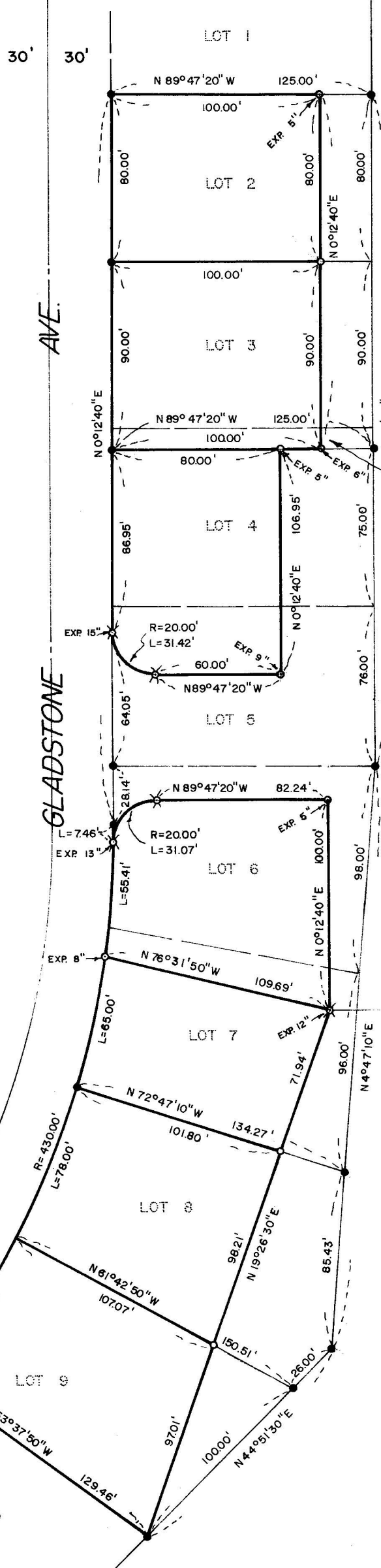
3229



SCALE: 1" = 60'

- Fd. 3/4" i. pin flush
- ◊ Set 5/8" X 24" i. pin flush unless otherwise indicated
- ✕ Set 5/8" X 30" i. pin flush unless otherwise indicated

Basis of Bearings:
 CASCADE VILLAGE,
 UNIT No. 2



Deed. Vol. 599, Pgs. 184

3229

REGISTERED
 OREGON
 LAND SURVEYOR

Mark E. Boyden

NOVEMBER 9, 1961
 MARK E. BOYDEN

SURVEY NARRATIVE TO COMPLY WITH O.R.S. 209.250
REVISED BY CHAPTER 555, O.L. 1963

FOR: White City Corporation
P.O. Box 526
White City, Oregon

PURPOSE: To monument and re-describe tracts within Lots 2 - 9 inc.,
Block 6 of CASCADE VILLAGE, UNIT NO. 2 (Recorded).

PROCEDURE:

Found original lot corner monuments as shown, monumenting
the new tract corners as indicated.

September 19, 1966

