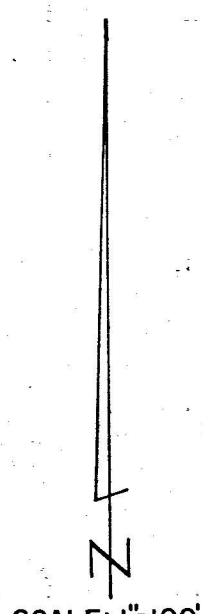
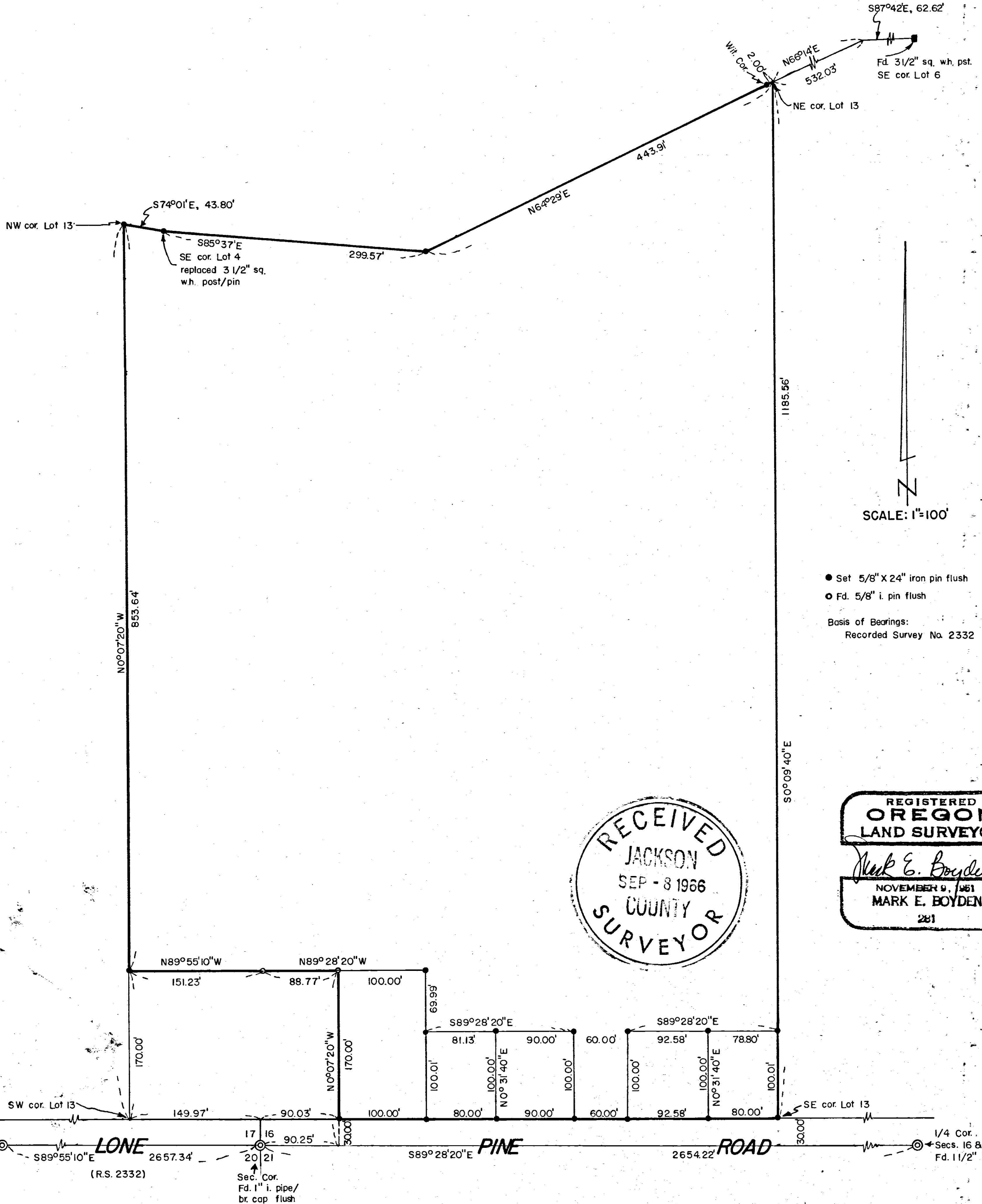
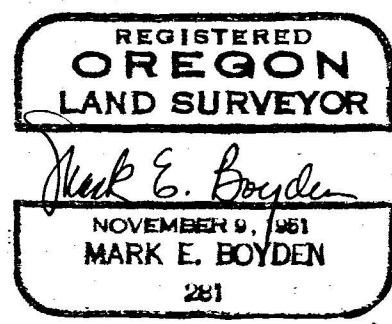
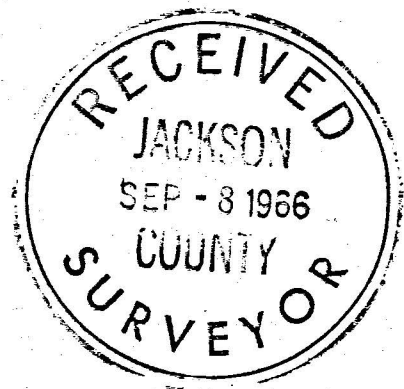


Survey for:
FLOYD HILTON
Located in Lot 13,
STEWART ACRES (Recorded)
in the SW 1/4 of Section 16
and the SE 1/4 of Section 17,
T37SRIW, W.M.
By: Mark E. Boyden
August 18, 1966



- Set 5/8" X 24" iron pin flush
- Fd. 5/8" i. pin flush

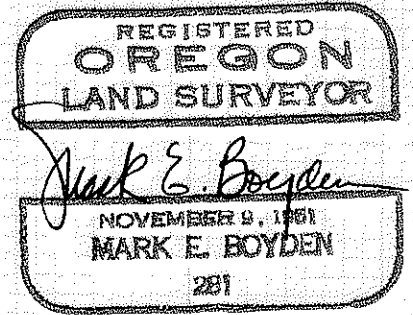
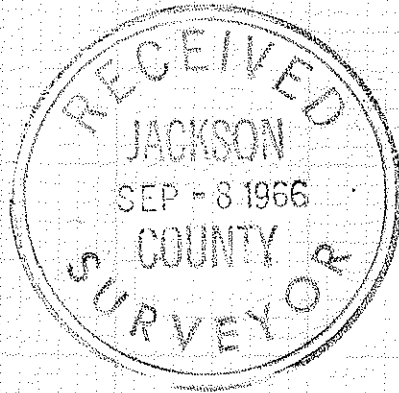
Basis of Bearings:
Recorded Survey No. 2332



The boundaries of the Hilton ownership surrounding the tract surveyed on Recorded Survey No. 1919 were controlled by the original deed description and not the monuments found on said survey.

Monumented the parcels as shown.

August 18, 1966



SURVEY NARRATIVE TO COMPLY WITH O.R.S. 209.250
REVISED BY CHAPTER 555, O.L. 1963

FOR: Floyd Hilton
2599 Lone Pine Road
Medford, Oregon

PURPOSE: To monument and describe 5 parcels within the Hilton ownership described in Oregon Title Insurance Co. Policy No. 1-47649, dated December 31, 1964. Also to monument the remaining corners of the overall Hilton ownership.

PROCEDURE:

Utilizing the bearing control and control monuments and distances as reported on Recorded Survey No. 2332, ran Easterly along the South boundary of Section 16, from the Southwest corner of said section to the South quarter corner thereof.

Also ran closed loop traverse around Lot 13 of STEWART ACRES (Recorded), tying to fence corners, old 3 1/2" square white painted stakes and to monuments set on Recorded Survey No. 1919.

A traverse was also run to a 3 1/2" white painted stake located at the Southeast corner of Lot 6, STEWART ACRES.

This data was then coordinated, and monuments set and procedures followed on the boundary determination of FOOTHILL SUBDIVISION (Recorded) was weighted.

The origin of the 3 1/2" square white posts could not be definitely determined, but coordination of these points indicated reasonable conformance with the original plat corners.

It is felt that these stakes are not the original lot corner monuments, but are the best evidence now available for the lot corners.

The positions for the Southwest and Southeast corners of Lot 13 were determined by proportionate measurement on the section lines, applied to the lot distances shown on the North boundary of Lone Pine Road.

The corners along the North boundary of Lot 13 were proportioned from said lot stakes found at the Southeast corner of Lots 4 and 6, STEWART ACRES.