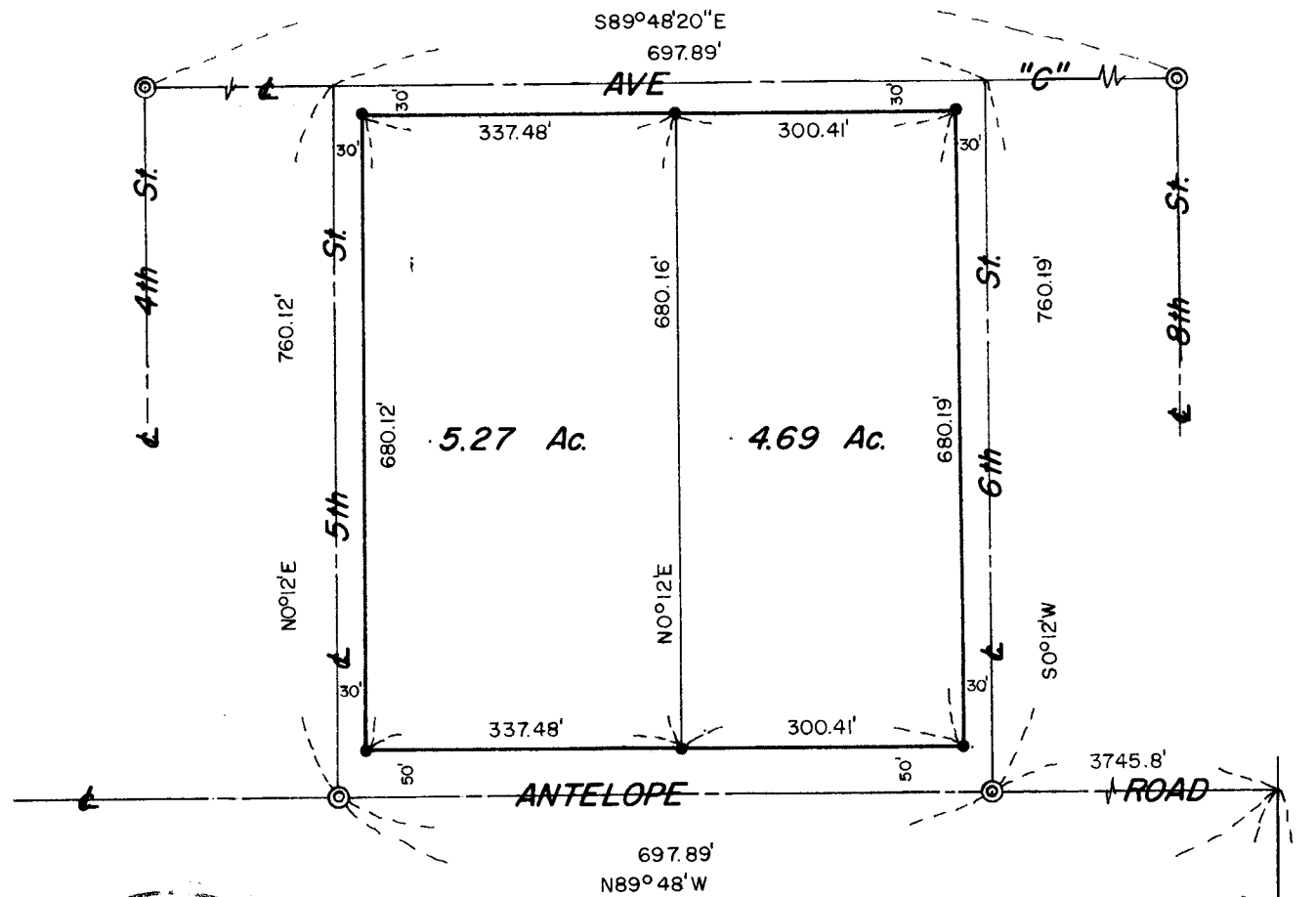


Survey for:
WHITE CITY CORPORATION
 Located in the NW 1/4,
 Sec. 19, T36SRIW, W.M.
 By: Mark E. Boyden
 July 18, 1966

3153



SCALE: 1"=200'

⊙ Found Br. disk in conc.

● Set 3/4" X 24" iron pin flush

Basis of Bearings: Recorded Survey No. 2013

3153

REGISTERED
OREGON
 LAND SURVEYOR

Mark E. Boyden
 NOVEMBER 9, 1961
MARK E. BOYDEN
 281

3153

SURVEY NARRATIVE TO COMPLY WITH O.R.S. 209.250
REVISED BY CHAPTER 555, O.L. 1963

FOR: White City Corporation
P.O. Box 526
White City, Oregon

PURPOSE: To monument and describe two parcels within the
White City Corporation ownership.

PROCEDURE:

Found concrete monuments for street centerline control as
shown.

Enclosed the subject tract on the street centerlines and
set corner monuments as indicated.

For the description tie to the quarter corner common to
Sections 19 and 20, chained from the monument at Sixth and
Antelope to the monument at Eighth and Antelope, and incorporated
the tie as shown on Recorded Survey No. 2013.

July 18, 1966

