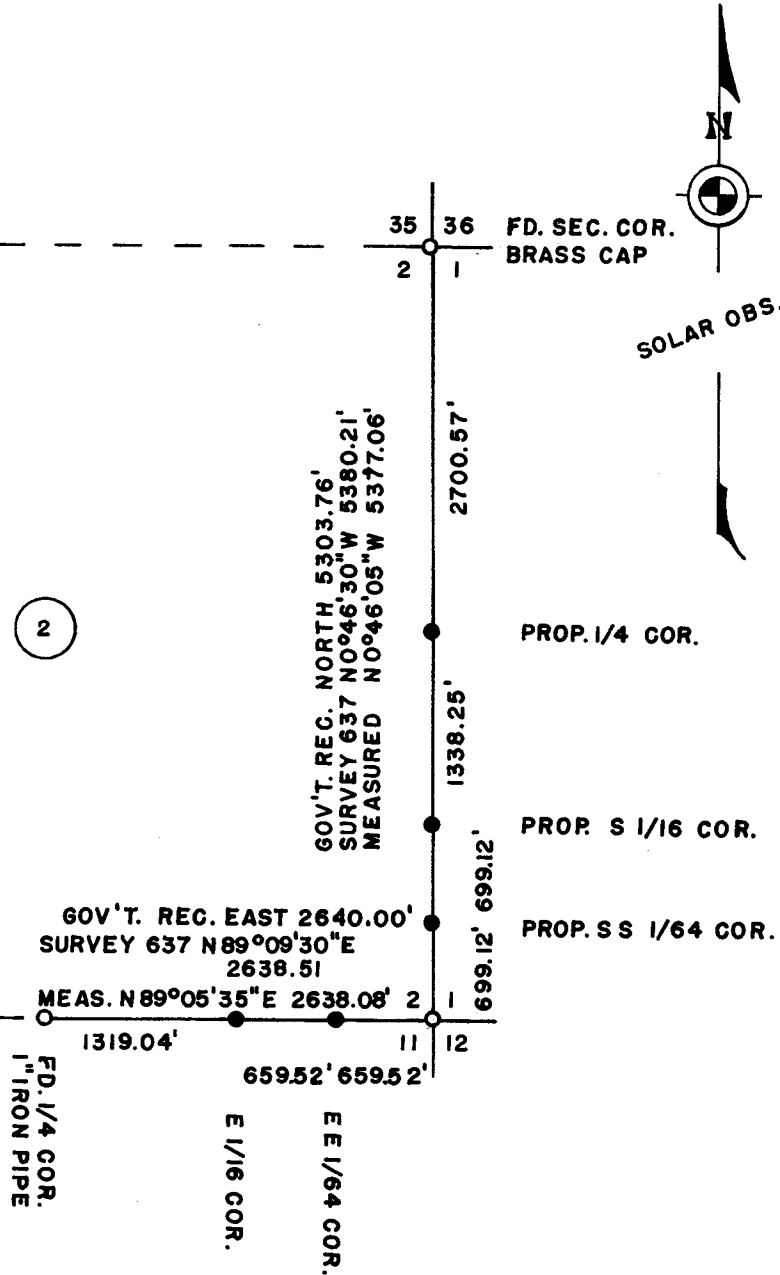


3140



SOLAR OBS.

SURVEY IN SECTION 2, T. 40 S., R. 3 E., W. M.

FOR

A. E. MANSFIELD

SURVEY BY
CHARLES H. HURST
MEDFORD, OREGON

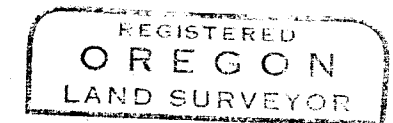
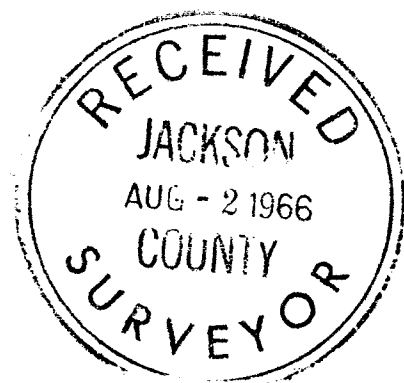
DATE
JUN 21 1966

LEGEND

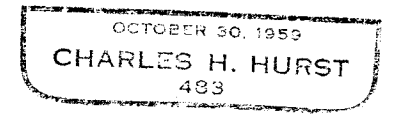
● SET 3/4" X 30" IRON PINS

DATE

SCALE 4" = 1 MILE



Charles H. Hurst



3140

OREGON REVISED STATUTES

Survey for: A. E. Mansfield
309 Kent
Ashland, Oregon

Survey by: Charles H. Hurst
765 Sunrise Avenue
Medford, Oregon

Bearing: Solar observation - December 20, 1965

Purpose: To set the corners shown on the attached plat

Procedure:

Corners set on the south boundary of Section 2 were determined by computation from coordinate positions of random line points.

Those corners set on the east boundary were established by offset from a random line tangent^{on} a single proportion basis.

Corners set were witnessed as follows:

E-E 1/64 corner common to Sections 2 and 11

Set 3/4"x30" iron pin for corner from which a 4" White fir bears N. 5° E. 17.84 feet distant scribed "EE 1/64 S 2 483 BT"; a 4" White fir bears S. 22° E. 12.31 feet distant scribed "EE 1/64 S 11 483 BT"

E 1/16 corner between Sections 2 and 11

Set a 3/4"x30" iron pin for corner from which a 11.6" Douglas fir bears N. 51 1/2° E. 8.30 feet distant scribed "E 1/16 S 2 483 BT"; a 10.9" Douglas fir bears S. 28° E. 18.32 feet distant scribed "E 1/16 S 11 483 BT"

Proportionate 1/4 corner between Sections 1 and 2

Set a brass capped 3/4"x30" iron pin for corner from which a 19.5" Ponderosa pine bears N. 89 1/2° E. 93.36 feet distant scribed "1/4 S 1 483 BT"; a 11.1" Ponderosa pine bears N. 24 1/2° W. 5.47 feet distant scribed "1/4 S 2 483 BT"

S 1/16 corner between Sections 1 and 2

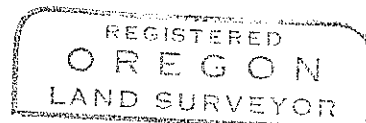
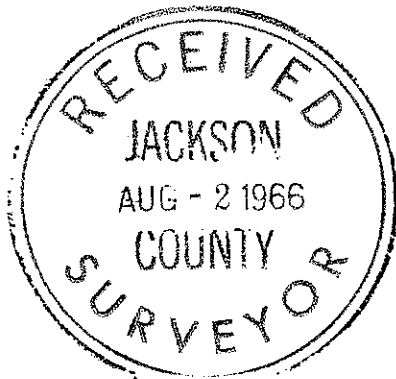
Set a 3/4"x30" iron pin for corner from which a 19.2" Ponderosa pine bears N. 36 1/2° W. 19.88 feet distant scribed "S 1/16 S 2 483 BT"; a 20" Douglas fir bears S. 65 1/2° E. 30.40 feet distant scribed "S 1/16 S 1 483 BT"

S-S 1/64 corner between Sections 1 and 2

Set a 3/4"x30" iron pin for corner from which an 18" Ponderosa pine bears S. 42 1/2° W. 24.37 feet distant scribed "SS 1/64 S 2 483 BT"; an 18" Douglas fir bears N. 86 1/2° E. 20.22 feet distant scribed "SS 1/64 S 1 483 BT"

Survey completed:

JUN 21 1966



Charles H. Hurst

