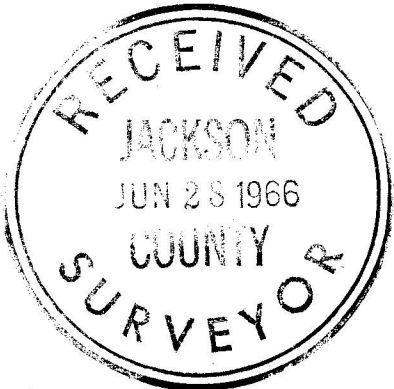
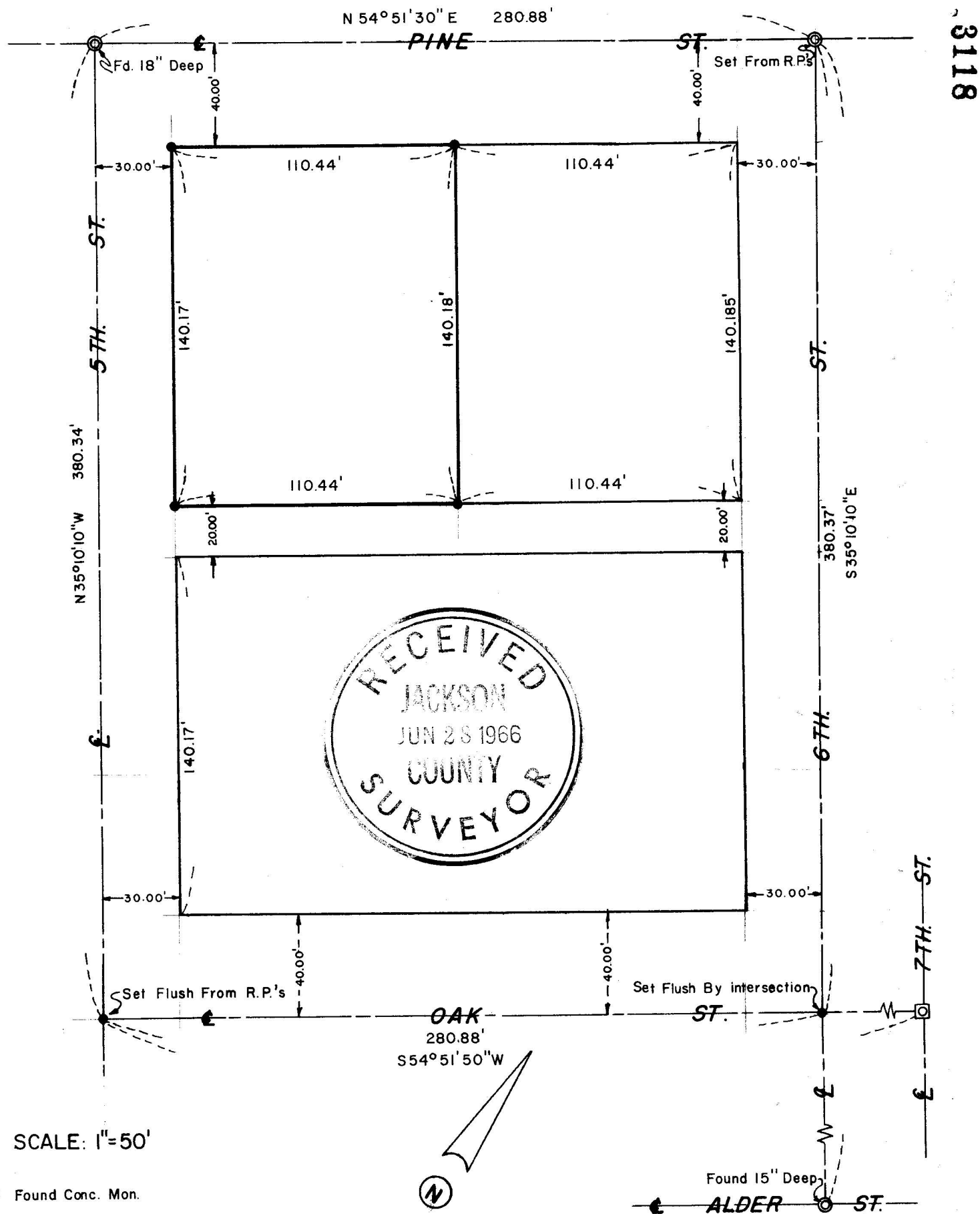


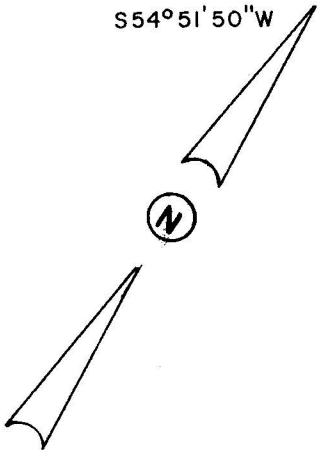
Survey For:
DONALD E. FABER
 Of Lots 3 & 4, Block 42
 Central Point, Oregon
 By: Mark E. Boyden
 May 26, 1966

REGISTERED
OREGON
 LAND SURVEYOR
Mark E. Boyden
 NOVEMBER 9, 1981
MARK E. BOYDEN
 261



SCALE: 1"=50'

- ⊙ Found Conc. Mon.
1910 Street Center
 - ⊠ Found Conc. Mon/Brass Disc Flush
 - Set 5/8"X24" Iron Pin Flush
- Basis of Bearings:
 Recorded Survey No. 223



Found 15" Deep
 ALDER ST.

3118

3118

SURVEY NARRATIVE TO COMPLY WITH O.R.S. 209.250
REVISED BY CHAPTER 555, O.L. 1963

FOR: Donald E. Faber
415 Hazel Street
Central Point, Oregon

PURPOSE: To monument the outside boundary corners of Lots 3 & 4,
Block 42, Central Point, Oregon.

PROCEDURE:

Found street centerline monuments shown to control the boundaries of Block 42. From said controls, measured around said block on the street centerline, monumenting the lot corners by proportionate measurement.

The street centerline monuments utilized that are not presently monumented by the 1910 street center concrete monuments, were recovered previously by this office on street improvement projects, and either referenced or re-monumented after the street improvement construction was completed.

May 26, 1966

