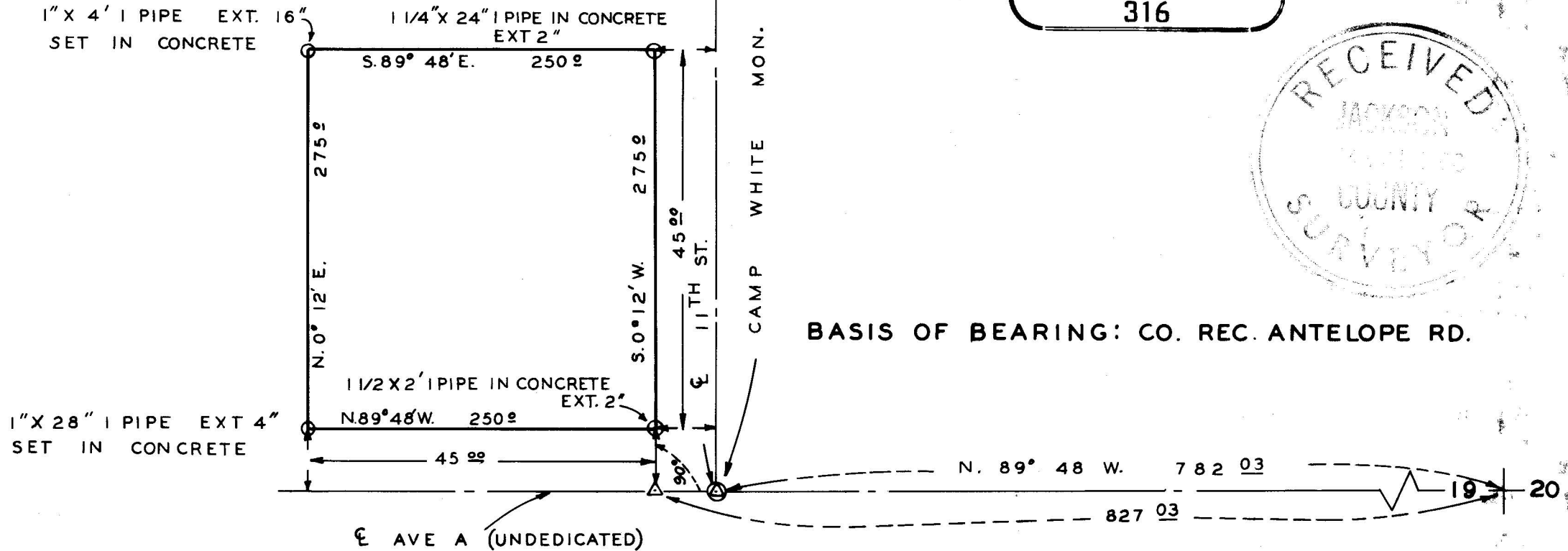
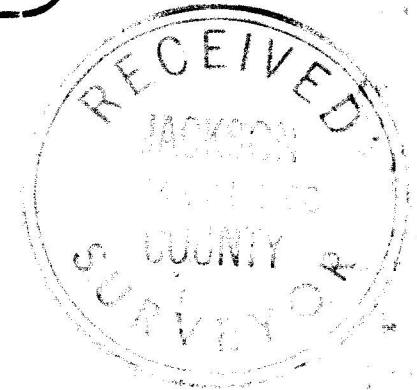


REGISTERED
OREGON
LAND SURVEYOR

Ray W. Bergmann
MAY 7, 1954
RAY W. BERGMANN
316



SURVEY NARRATIVE TO COMPLY WITH O.R.S. 209.250

FOR: Pacific Power & Light
216 W. Main St.
Medford, Oregon

LOCATION: NE $\frac{1}{4}$, Sec. 19, T.36 S., R.1 W., W.M.

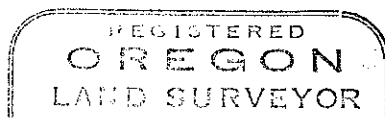
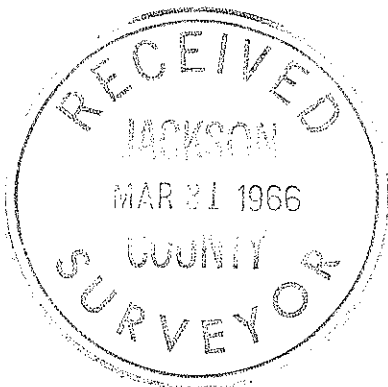
PURPOSE: To locate and monument a substation site on the West side of 11th street.

PROCEDURE:

The brass caps monumenting the intersections of 11th and Antelope Rd and 11th and Avenue A were found in the field as were the monuments for the centerline of Antelope and Agate Road and the East $\frac{1}{4}$ corner of Section 19. The relationship of the street monuments was verified for distance and bearing. The Easterly property corners were set to give a 45.00' set back from the centerline of 11th street. The four corners are monumented by pipes ranging from 1" I.D. to $1\frac{1}{2}$ " pipes set in concrete.

BASIS OF BEARING:

The bearing along the centerline of Antelope Rd. as furnished by the County and verified by ties to two transmission lines South of Avenue "A".



Ray W. Bergmann 2-18-66

 A rectangular stamp with the text "MAY 7, 1954 RAY W. BERGMANN 316" inside.