

Butte Falls, Oregon
January 20, 1966

County Surveyor
Jackson County Courthouse
Medford, Oregon

Dear Sir;

Please record the following information pertaining to the survey of Public Lands.

NARRATIVE: Location; Section 3, T34S, R2E, Willamette Meridian.

Object: To subdivide into $\frac{1}{4}$ sections and set and monument lost and new corners. For Medford Corporation.

Original evidence found;

cor. $\frac{9}{10}$ ³ stone, 40" D. Fir S17°E 62.5', scribes visible.
44" " N37°E 53.4', possible B.T.

cor. $\frac{4}{9}$ ³ stone, raised mound Scribed RS 461 BT
18" D. Fir N45°W 16.5'
14" " S41°W 19.1'

cor. $\frac{33}{4}$ ³ T33S 4 BTs. Fir S52°W (not S78°W) 25 lks.
4 / 3 T34S Stone

cor. $\frac{34}{2}$ ³ stone Fir N50°E 60 lks (Dead) Scribed RS 461 BT
Dogwood N82°W 16 lks (Dead) 6" W. Fir N70°E 13.0'
24" " N12°W 31.3'

Cor. $\frac{34}{3}$ ² stone 12" W. Fir S41½°W 22 lks
40" D. Fir S53°E 95 " (Down)

$\frac{1}{4}$ cor. $\frac{3}{2}$ stone BT snag, N85°E instead of S85°E 57 lks; 1 BT stump hole, called for stone a mound badly weathered.

cor. $\frac{3}{10}$ ² stone two BTs OK, SE and NW/

$\frac{1}{4}$ cor. $\frac{3}{10}$ stone 14" Hem N74°E 27 lks (down)
7" " S27°W 7 "

Few original blazes found, newer conflicting blazes.

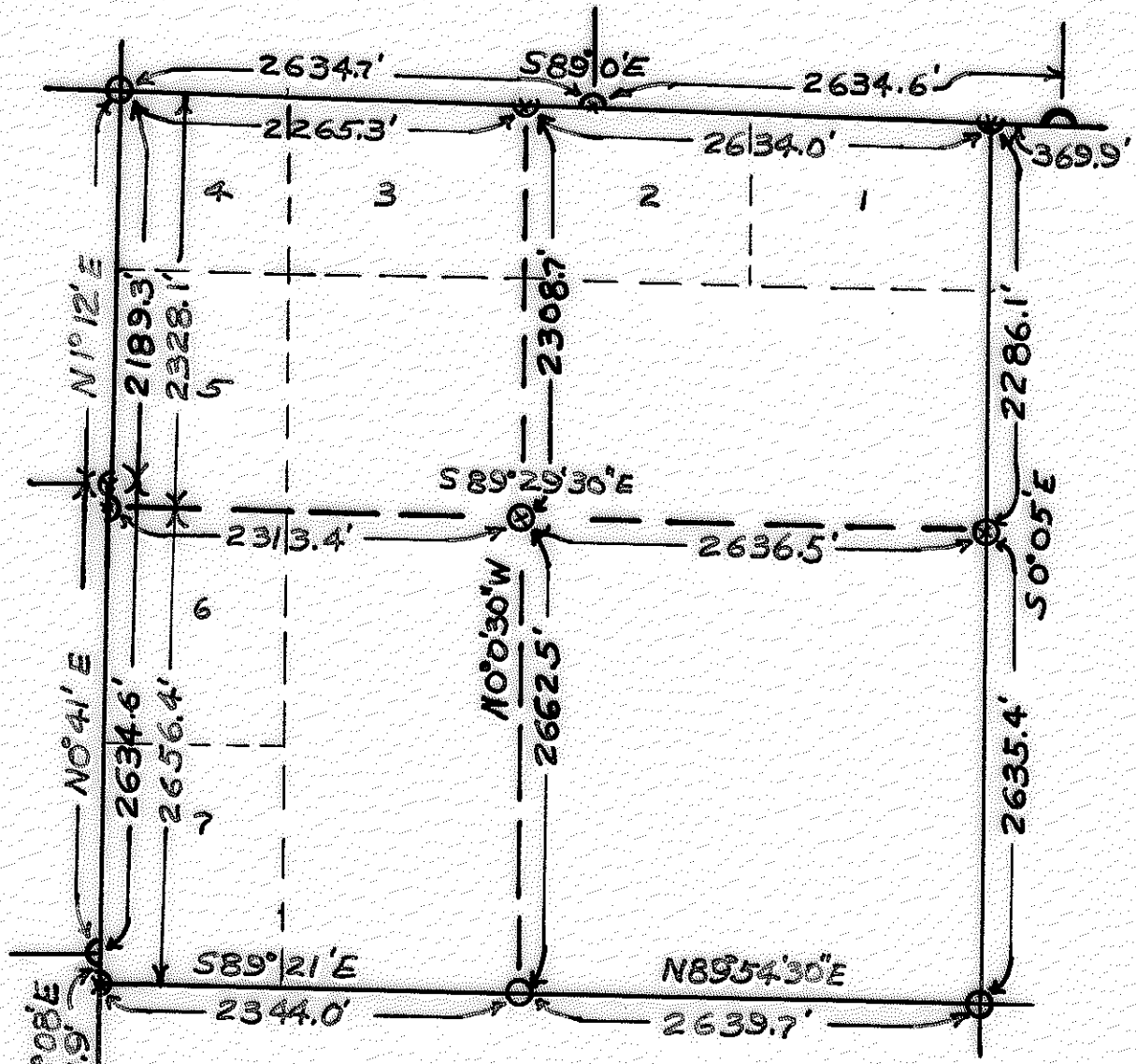
Began transit and chain survey. True Bearings by Solar observations. Ran perimeter then ran between $\frac{1}{4}$ corners.

NORTH LINE: True Bearing S89°E

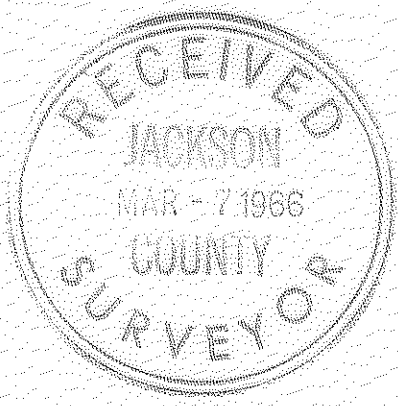
0.0 feet	Cor. $\frac{33}{4}$ T33S stone	
	$\frac{4}{3}$ T34S	
2265.3 "	set N $\frac{1}{4}$ cor. S. 3 only by proportional measurement	set cap 5/8"x3' rebar stamped
	Scribed RS 461 BT	$\frac{34}{3}$ ONLY
	8" W. Fir S23°E 9.0'	RS 461
	20" Cedar N18°W 20.9'	
2634.7 "	set S $\frac{1}{4}$ cor. S. 34 only	set cap 5/8"x3' rebar stamped
	midway between south section corners of sec. 34.	$\frac{34}{3}$ ONLY
	Scribed RS 461 BT	3
	8" S. Pine S85°W 7.1'	RS 461
	6" W. Fir N85°E 18.7'	

SECTION PLAT
S. 3, T 34 S R 2 E W. M.

3022



Scale 1" = 1000'
 1-66
 x Cap



4899.3 feet old closing cor. $\frac{34}{3/2}$ stone. Set new closing cor. $\frac{34}{3/2}$ on line
 3.1' North of above stone. set cap 5/8"x3' rebar scribed,
 Scribed RS 461 BT
 Orig. BT 12" W.Fir S35°W 17.9'
 15" W.Fir N36°W 30.7'

5269.3 " cor. $\frac{34/35}{2}$ T33S stone. Scribed RS 461 BT
 T34S 6" W.Fir N70°E 13.0'
 24" " N12°W 31.3'

EAST LINE: True Bearing S0°05'E

0.0 " 6C $\frac{34}{3/2}$ rebar
 2286.1 " $\frac{1}{4}$ cor. between S. 3 and 2. Set 2"x4' pipe $\frac{3}{2}$
 Scribed RS 461 BT stamped RS 461
 6" W.Fir S41°W 26.4'
 7" " N22°E 10.3'

4921.5 " cor. $\frac{3/2}{10/11}$ stone.

SOUTH LINE: True Bearing S89°54'30"W SE to $S\frac{1}{4}$ corners.

0.0 " cor. $\frac{3/2}{10/11}$ stone.
 2639.7 " $\frac{1}{4}$ cor. between 3 and 10 stone and 2 BTs.
 True Bearing N09°21'W $S\frac{1}{4}$ to SW corners.

4975.1 " cor. $\frac{9/3}{10}$ stone.
 4983.7 " set closing corner $\frac{9/3}{10}$ on line, cap 5/8"x3' rebar stamped
 between $\frac{4/3}{9/3}$ and E $\frac{1}{4}$ section 10, 8.6' West $\frac{9/3}{10}$ CC
 of old CC stone. RS 461
 Scribed RS 461 BT AND as below,
 10" D.Fir S50°E 26.3' S10, T34S, R2E
 6" W.Fir N40°E 35.3' S 3, T34S, R2E
 15" D.Fir N70°W 16.0' S 9, T34S, R2E

WEST LINE: True Bearing N0°08'E between $\frac{9/3}{10}$ and $\frac{4/3}{9/3}$ (using E $\frac{1}{4}$ cor. Sec 9)
 10 $\frac{9/3}{9/3}$ (angle point)

0.0 " set CC rebar.
 161.9 " cor. $\frac{4/3}{9/3}$ stone and mound Scribed RS 461 BT
 18" D.Fir N45°W 16.5'
 14" " S41°W 19.1'

2656.6 " True Bearing above corner Northerly to E $\frac{1}{4}$ cor. 4 only. N0°41'E.
 set $\frac{1}{4}$ cor. sec. 3 only by Proportional measurement.
 Scribed RS 461 BT Set cap 5/8"x3' rebar stamped
 24" D.Fir S50°W 43.6' $\frac{4}{W}$
 5" W.Fir N55°E 22.2' $\frac{1}{\frac{1}{2} 3}$
 RS 461

2795.4 " set E $\frac{1}{4}$ cor. sec. 4 only by proportional measurement.
 Scribed RS 461 BT Set cap 5/8"x3' rebar stamped
 12" W.Fir N51°W 13.3' E/
 7" " S77°W 31.8' 4 $\frac{1}{2} / 3$
 True Bearing N1°12'E North to Sec. cor. RS $\frac{1}{461}$

4984.7 " cor. $\frac{33/34}{4/3}$ stone.
 Set center center $\frac{1}{4}$ corner by intersection of lines between $\frac{1}{4}$ corners.
 True Bearing N-S centerline N0°00'30"W 4971.2' Set cap 5/8"x3'
 E-W " S89°29'30"E 4949.9' rebar stamped
 C $\frac{1}{2} 3$
 Scribed RS 461 BT RS 461
 8" D.Fir S6°E 1.5'
 9" " N16°E 11.1'

