

2968

REGISTERED  
**OREGON**  
 LAND SURVEYOR

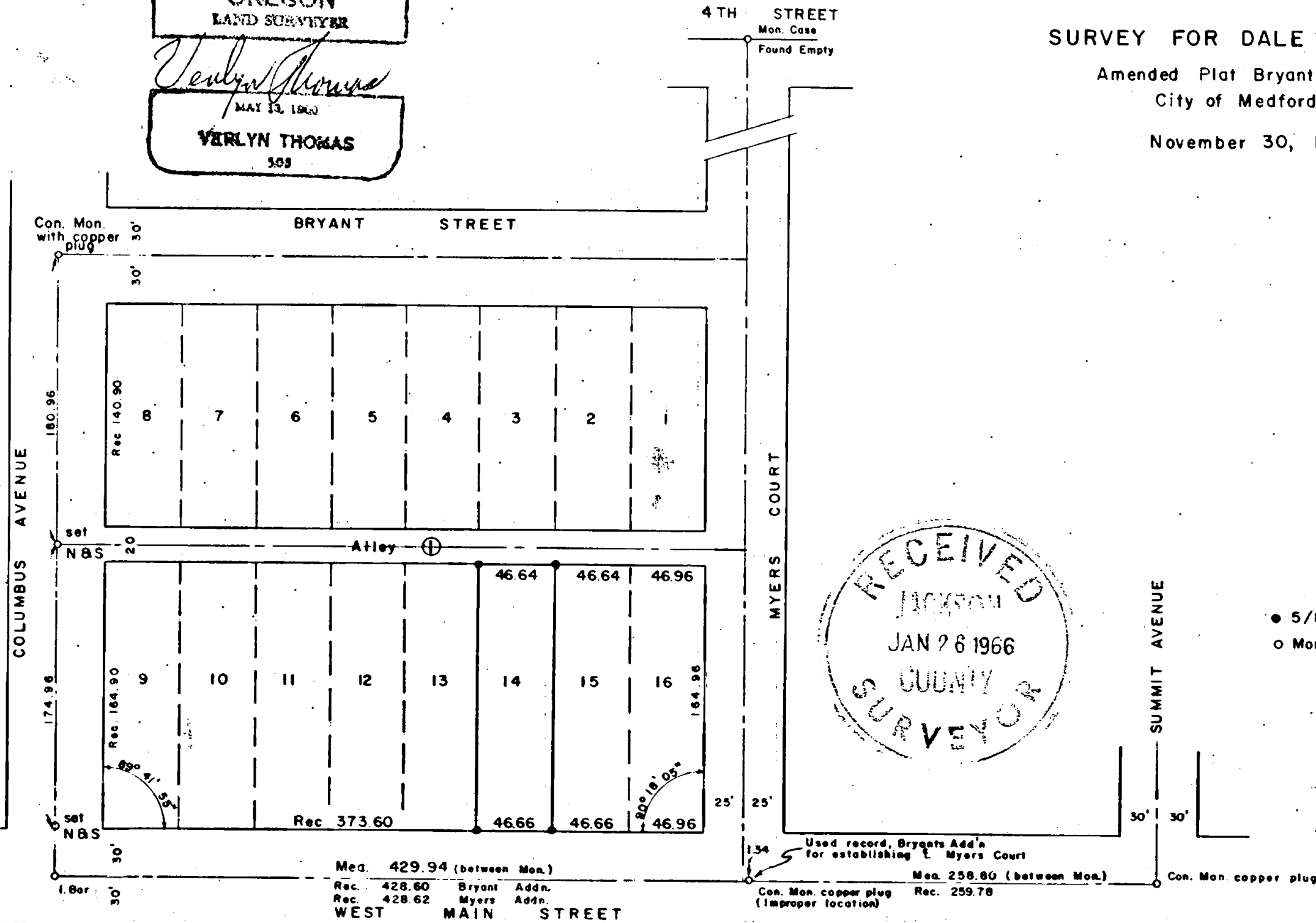
*Verlyn Thomas*  
 MAY 13, 1960

**VERLYN THOMAS**  
 369

**SURVEY FOR DALE NIEDERMEYER**

Amended Plat Bryants Addition  
City of Medford

November 30, 1965



Scale 1" = 80'

- 5/8x24" I. Pins set flush
- Monument found

RECEIVED  
 JACKSON  
 JAN 26 1966  
 COUNTY  
 SURVEYOR

2968

SURVEY NARRATIVE TO COMPLY WITH O.R.S. 209.250  
REVISED BY CHAPTER 555, O.L. 1963

FOR: Dale Niedermeyer  
2905 Larch  
Medford, Oregon

PURPOSE: Monument Lot 14, Block 1 of AMENDED PLAT OF BRYANTS ADDITION to the City of Medford.

PROCEDURE: City monuments were recovered, to be used as control. The Monument case at 4th Street and Myers Court was dug out to a depth of 3 feet, but found to be empty. Numerous checks with the City of Medford Engineers Dept. failed to produce any notes which would determine the true location of Meyers Court. The Monument at Meyers Court and Main St. (1 foot deep) is obviously out of position. Measurements from Columbus to this Monument, and from Summit Avenue, all indicate this monument to be in error.

Lot 14 was finally monumented at record distance from Columbus Ave. in view of conflicting evidence in the field. This would seem to closely substantiate the measurements recorded for the later MYERS ADDITION plat. Proportionate measurements were used for Easterly and Westerly Lot lines.

